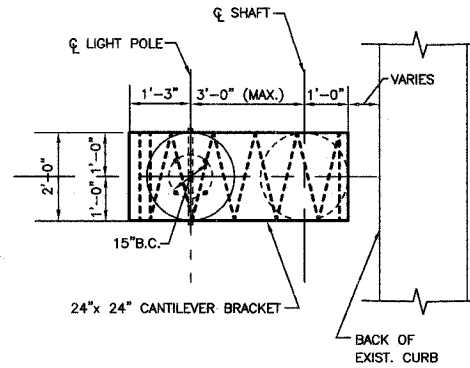
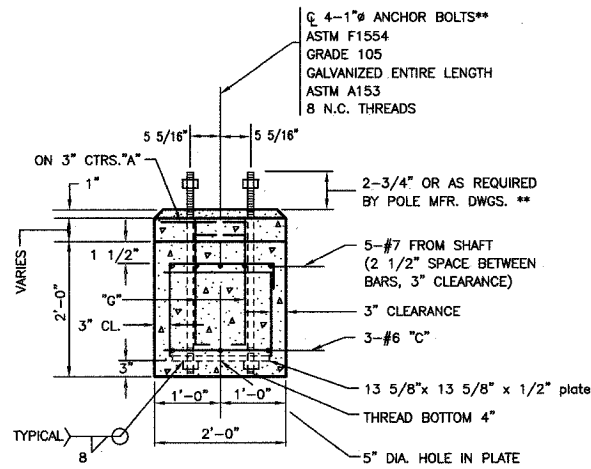
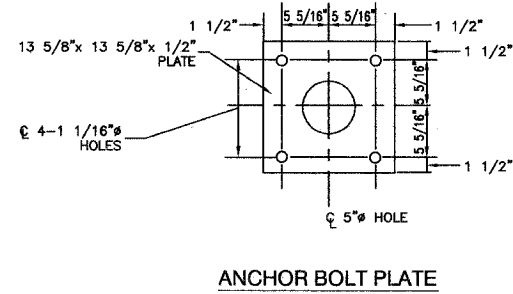
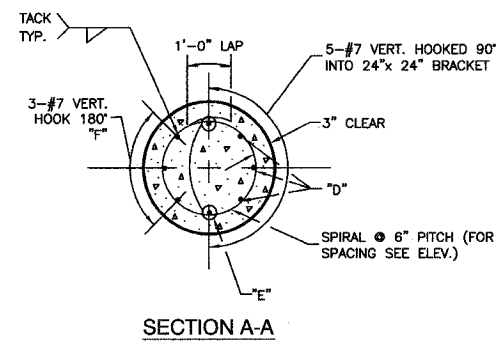


FAUL. NO.	SECTION	COUNTY	TOTAL SHEETS	SHEET NO.
1585	02-00079-0-LT	COOK	9	8
STA.	TO STA.			
FED. ROAD DIST. NO.	ILLINOIS	FED. AID PROJECT		

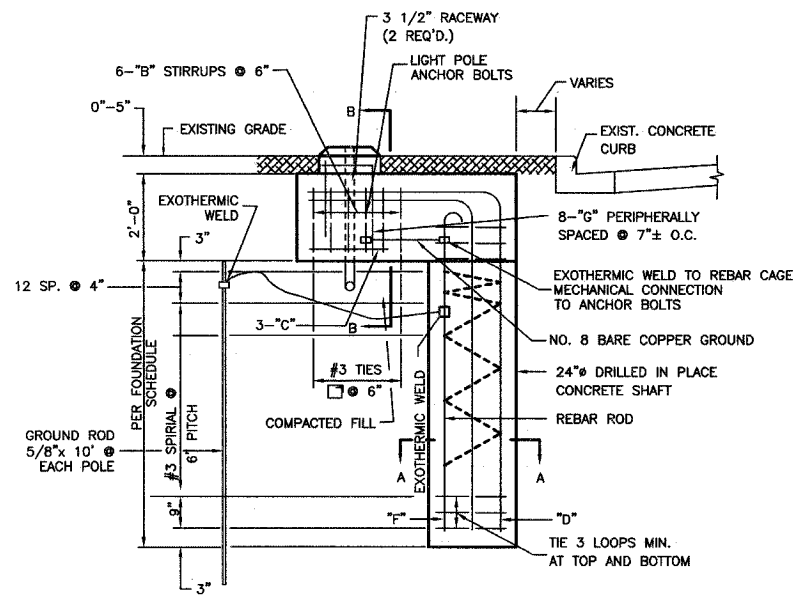


SECTION B-B

PLAN - CANTILEVERED BRACKET

****NOTE:**
THE TOP OF THE ANCHOR BOLTS SHOULD NOT PROJECT MORE THAN 4" ABOVE A 60" CHORD ALIGNED RADIALLY TO THE CENTERLINE OF THE HIGHWAY AND CONNECTING ANY POINT WITHIN THE LENGTH OF THE CHORD, ON THE GROUND SURFACE ON ONE SIDE OF THE SUPPORT TO A POINT ON THE GROUND SURFACE ON THE OTHER SIDE.

- NOTE:**
- CONCRETE SHALL BE 3500 PSI AT 14 DAYS. (CLASS SI)
 - REINFORCING BARS SHALL BE OF NEW BILLET STEEL ASTM M42M (M42) AND DEFORMED
 - HOLE FOR THE FOUNDATION (SHAFT) SHALL BE AUGERED
 - POLE FOUNDATION, OFFSET FOR THIS APPLICATION IS EQUIVALENT TO 13.5 IN. FT. PER FOUNDATION.
 - THE CONTRACTOR SHALL USE A #3 SPIRAL AT 6" PITCH OR MAY SUBSTITUTE #3 TIES 12" O.C. WITH THE APPROVAL OF THE ENGINEER

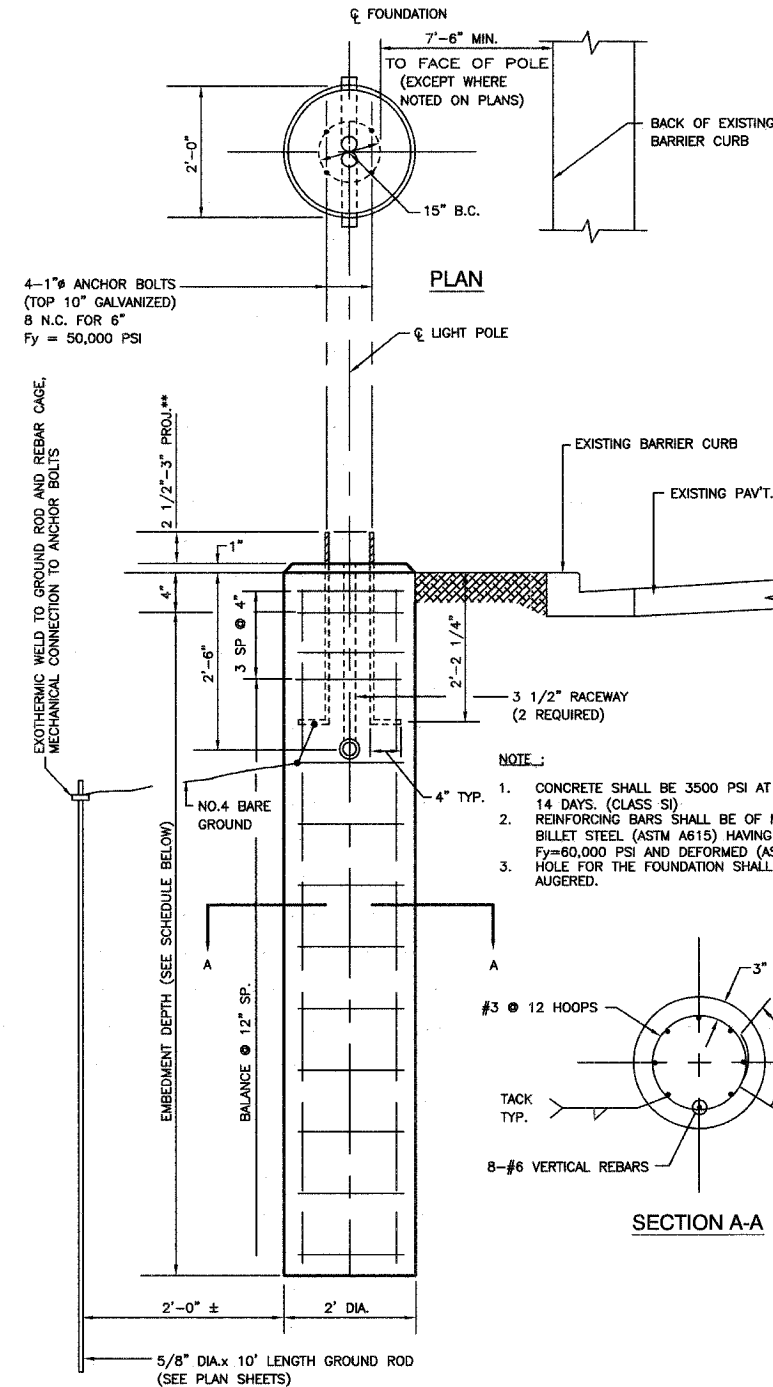
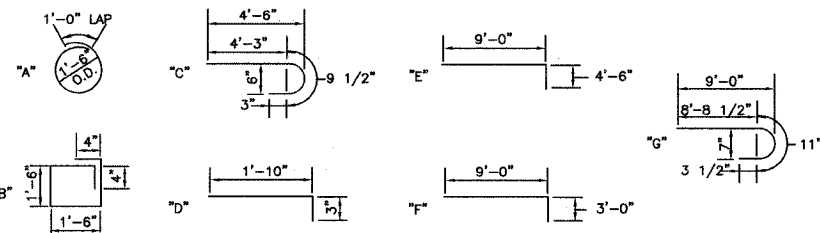


ELEVATION

POLE FOUNDATION, OFFSET - DETAILS

BILL OF MATERIALS
"LIGHT POLE FOUNDATION, 24" DIAMETER, OFFSET"

QUAN.	MARK	SIZE	LENGTH	SHAPE
11	A	NO.3	5'-9"	○
6	B	NO.3	6'-8"	□
3	C	NO.6	5'-31/2"	○
8	G	NO.6	2'-1"	□
3	D	NO.7	13'-6"	□
2	E	NO.7	12'-0"	□
3	F	NO.7	9'-11"	□
	REINFORCING BARS	LBS.	285	
	CLASS X CONCRETE	CU.YDS.	1.7	
	ANCHOR BOLTS	NO.	4	
	ANCHOR BOLT PLATE NO.		1	



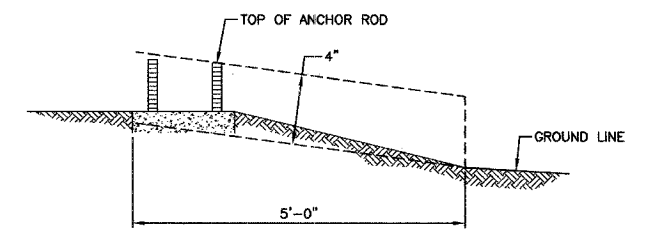
ELEVATION

LIGHT POLE FOUNDATION (TYPICAL)

****NOTE:**
ACTUAL FOUNDATION DEPTH IS EMBEDMENT DEPTH (FROM SCHEDULE) PLUS 6" EQUALS TOTAL DEPTH.
7'-0"+6"= 7'-6" FOR 35" MH

FOUNDATION SCHEDULE

TYPE OF SOILS	STANDARDS	EMBEDMENT MOUNTING HEIGHT			
		30 FT.	35 FT.	40 FT.	47.5 FT.
SOFT CLAY	Qu = .25-.50 T/FT. 2	9'-0"	9'-8"	10'-6"	14'-0"
MEDIUM CLAY	Qu = .50-1.0 T/FT. 2	6'-6"	7'-0"	7'-6"	10'-0"
DENSE CLAY	Qu = 1.0-2.0 T/FT. 2	5'-6"	6'-0"	6'-6"	8'-6"
LOOSE SAND	N = 4-10	7'-0"	7'-8"	8'-4"	11'-0"
MEDIUM SAND	N = 10-30	6'-0"	6'-6"	7'-3"	9'-6"
DENSE SAND	N = 30-50	5'-6"	6'-0"	6'-6"	8'-6"



FOUNDATION EXTENSION DETAIL

****NOTE:**
THE FOUNDATION SHALL NOT PROTRUDE MORE THAN 100MM (4") ABOVE THE FINISHED GRADE WITHIN A 1.5M (60") CHORD ACROSS THE FOUNDATION, WITH ANCHOR RODS INCLUDED. IN ACCORDANCE WITH AASHTO GUIDELINES, IF THE FOUNDATION HEIGHT, INCLUDING ANCHOR RODS, EXTENDS BEYOND THESE SPECIFIED LIMITS, THE FOUNDATION SHALL BE REPLACED AT THE CONTRACTORS EXPENSE. SEE FOUNDATION EXTENSION DETAIL.

ROBINSON ENGINEERING, LTD.
CONSULTING REGISTERED PROFESSIONAL ENGINEERS AND PROFESSIONAL LAND SURVEYORS
17000 SOUTH PARK AVENUE SOUTH HOLLAND, ILLINOIS 60478
(708) 331-6700 © COPYRIGHT 2005 FAX (708) 331-3926

119TH STREET LIGHTING DETAILS

ALSIP, ILLINOIS

Drawn by: RM Date: 12/20/05
Checked by: TRL/PAP Scale: NONE
Sheet 8 of 9 Project No. 02-160.02

REVISIONS		
No.	Date	Remarks