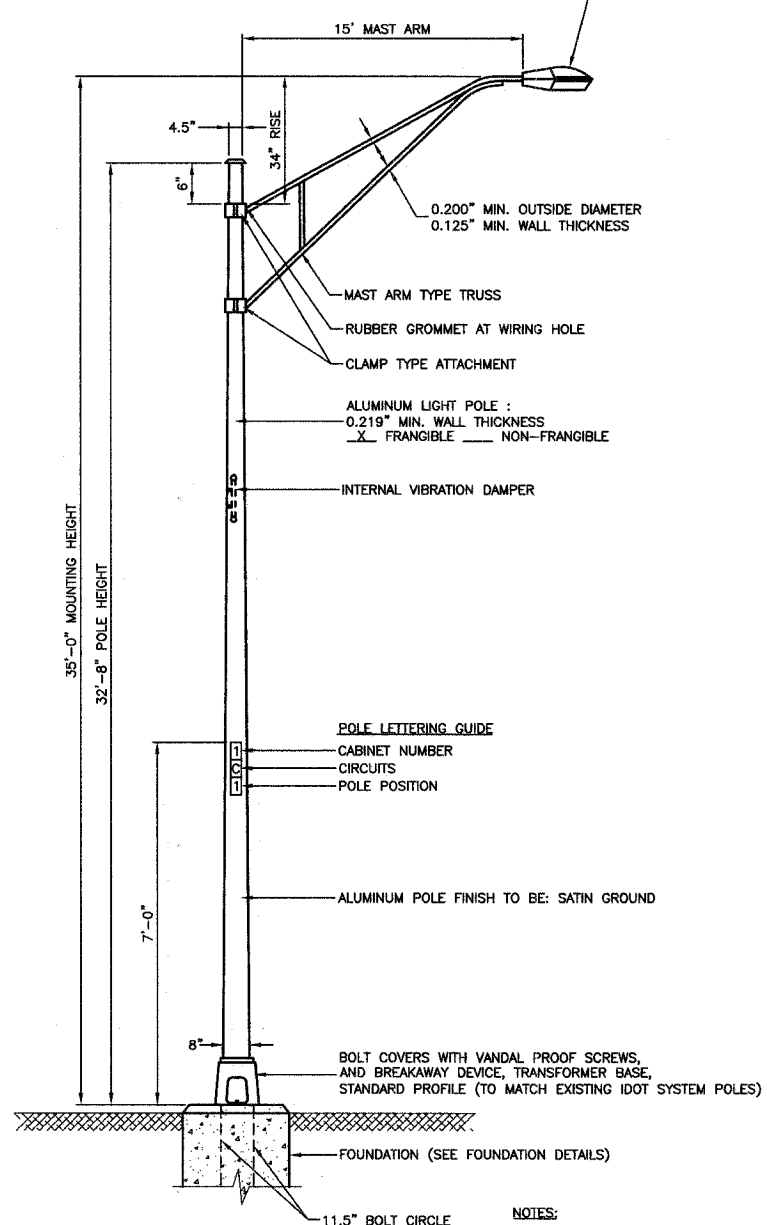


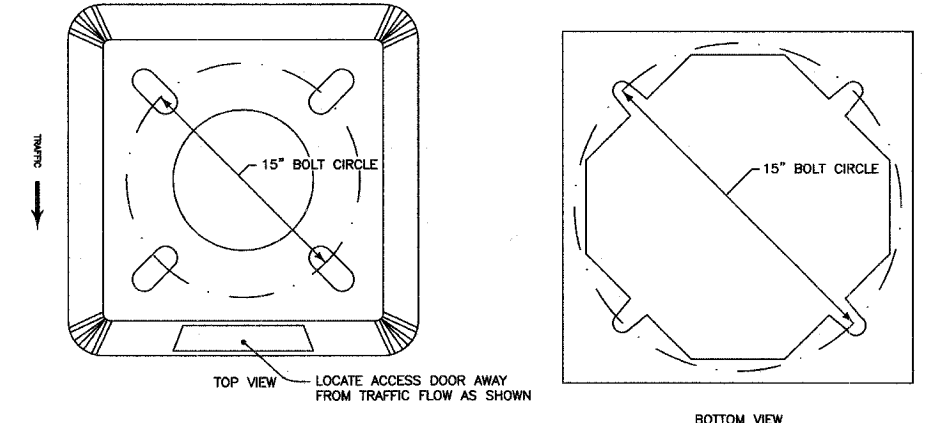
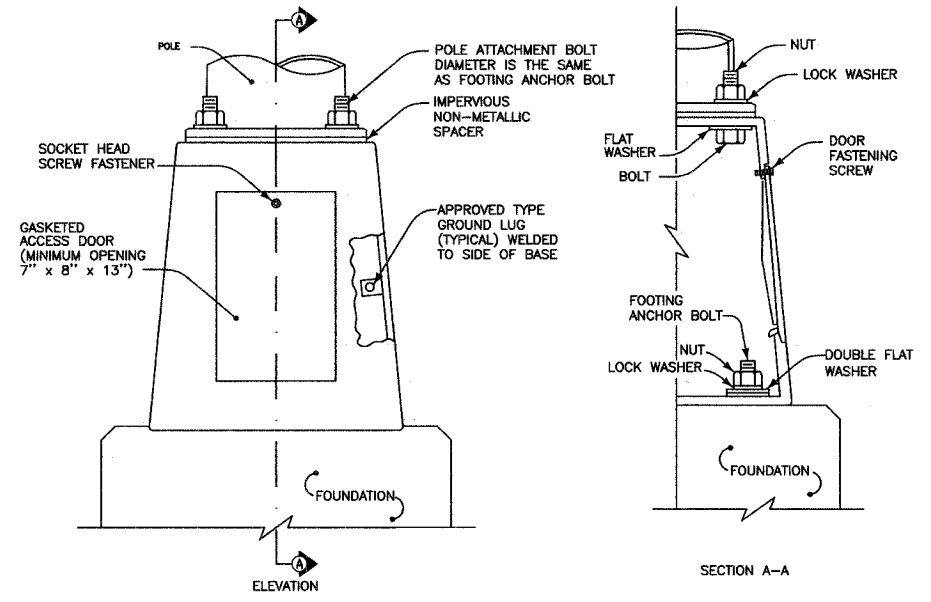
FAC. NO.	SECTION	COUNTY	TOTAL SHEETS	SHEET NO.
1585	02-00079-0-LT	COOK	9	9
STA.	TO STA.			
FED. ROAD DIST. NO.	ILLINOIS	FED. AID PROJECT		

**LUMINAIRE:**  
 250 WATT HIGH PRESSURE SODIUM LAMP  
 240 VOLT BALLAST  
 I.E.S. TYPE: MC III LIGHT DISTRIBUTION  
 LENS TYPE: FLAT  
 INITIAL LAMP LUMENS: 28,000  
 LAMP LIFE: 24,000 HOURS



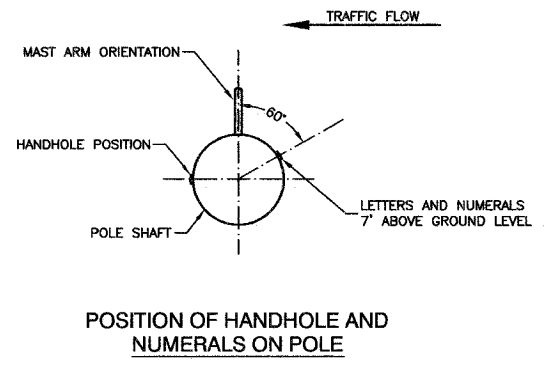
TYPICAL POLE INSTALLATION (35' MH)

- NOTES:**
1. THE LIGHTING UNITS SHALL MEET AASHTO DESIGN CRITERIA. DESIGN FOR 90 M.P.H. WIND WITH 30% GUST AND 75 POUND LUMINAIRE HAVING AN E.P.A. OF 1.6 SQ. FT. AND PROPER ICE LOADING.
  2. ALUMINUM ALLOY 6063-T6 SHALL BE USED.



- TRANSFORMER BASE NOTES:**
1. THE DETAILS INDICATED HEREON ARE TYPICAL FOR A CAST ALUMINUM TRANSFORMER BASE. ALTERNATE DESIGNS MAY BE SUBMITTED TO THE ENGINEER FOR APPROVAL.
  2. ALL DIMENSIONS SHALL MEET AASHTO STANDARDS.
  3. MATERIALS AND METHODS OF CONSTRUCTION SHALL BE IN ACCORDANCE WITH 2002 IDOT STANDARD SPECIFICATIONS FOR ROAD AND BRIDGE CONSTRUCTION.
  4. ALL MATERIALS, COMPONENTS AND EQUIPMENT SHALL BE U.L. LISTED.

**TRANSFORMER BASE DETAIL**



POSITION OF HANDHOLE AND NUMERALS ON POLE

<b>ROBINSON ENGINEERING, LTD.</b> CONSULTING REGISTERED PROFESSIONAL ENGINEERS AND PROFESSIONAL LAND SURVEYORS 17000 SOUTH PARK AVENUE SOUTH HOLLAND, ILLINOIS 60478 (708) 351-6700 FAX (708) 351-3828 © COPYRIGHT 2005		<b>REVISIONS</b> No. Date Remarks	
119TH STREET LIGHTING DETAILS			
<b>ALSIP, ILLINOIS</b>			
Drawn by: RM Checked by: TRL/PAP Sheet 9 of 9	Date: 12/20/05 Scale: NONE Project No. 02-160.02		