

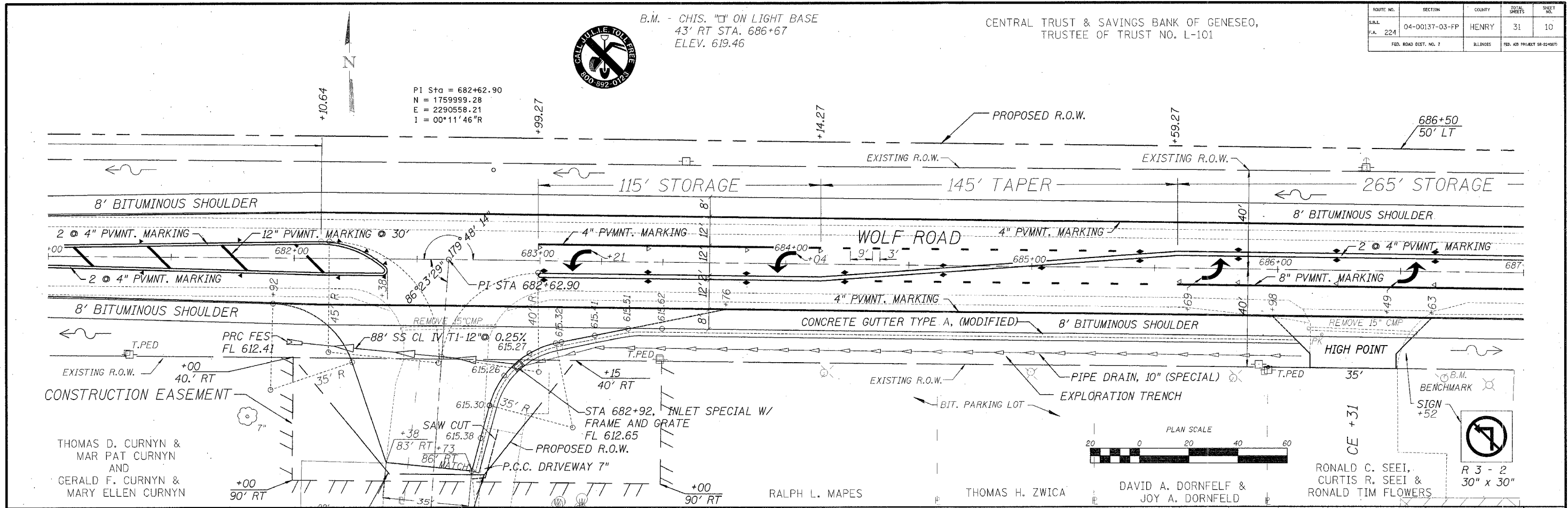
ROUTE NO.	SECTION	COUNTY	TOTAL SHEETS	SHEET NO.
S.B.L. 224	04-00137-03-FP	HENRY	31	10
FED. ROAD DIST. NO. 7		ILLINOIS	FED. AID PROJECT 18-22-907	

B.M. - CHIS. "C" ON LIGHT BASE  
43' RT STA. 686+67  
ELEV. 619.46

CENTRAL TRUST & SAVINGS BANK OF GENESEO,  
TRUSTEE OF TRUST NO. L-101



PI Sta = 682+62.90  
N = 1759999.28  
E = 2290558.21  
I = 00°11'46"R



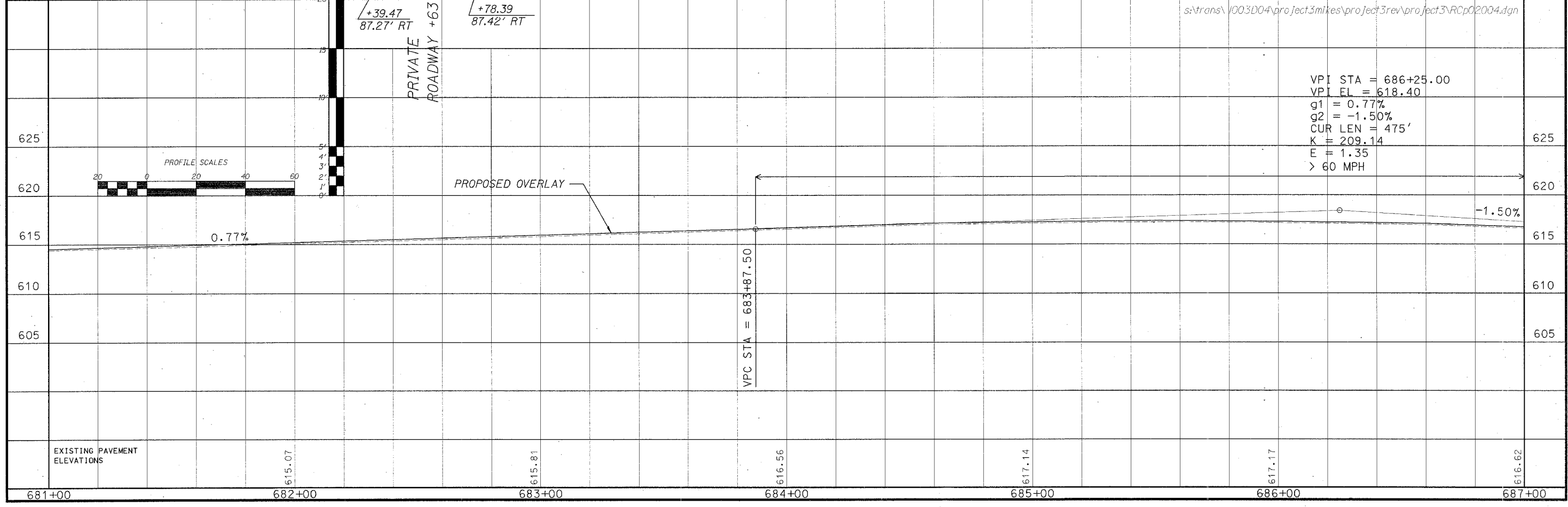
THOMAS D. CURNYN &  
MAR PAT CURNYN  
AND  
GERALD F. CURNYN &  
MARY ELLEN CURNYN

RALPH L. MAPES

THOMAS H. ZWICA

DAVID A. DORNFELD &  
JOY A. DORNFELD

RONALD C. SEEI,  
CURTIS R. SEEI &  
RONALD TIM FLOWERS



s:\trans\1003D04\project3mikes\project3rev\project3\RCp02004.dgn