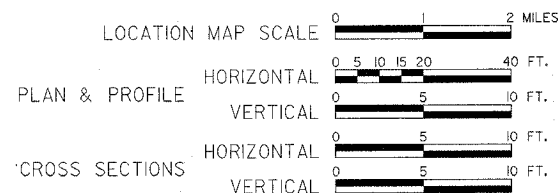


STATE OF ILLINOIS DEPARTMENT OF TRANSPORTATION PLANS FOR PROPOSED LOCAL AGENCY IMPROVEMENT FEDERAL-AID BRRP PROJECT

INDEX OF SHEETS

- 1 = COVER SHEET
- 2 = GENERAL NOTES, SCHEDULES, AND TYPICAL SECTION
- 3 = EROSION CONTROL PLAN
- 4 = PLAN AND PROFILE
- 5 = CULVERT DETAILS
- 6-7 = CROSS SECTIONS



SUMMARY OF QUANTITIES

| CODE NO. | QUANTITY | UNIT | PAY ITEM |
|-----------|----------|--------|------------------------------------|
| 20200100 | 700 | CU YD | EARTH EXCAVATION |
| *20700220 | 119 | CU YD | POROUS GRANULAR EMBANKMENT |
| 25000350 | 0.75 | ACRE | SEEDING CLASS 7 |
| *25001000 | 0.75 | ACRE | SEEDING CLASS 2 (SPECIAL) |
| 25100630 | 760 | SQ YD | EROSION CONTROL BLANKET |
| 28000300 | 10 | EACH | TEMPORARY DITCH CHECK |
| *35101400 | 833 | TON | AGGREGATE BASE COURSE, TYPE B |
| *40200800 | 40 | TON | AGGREGATE SURFACE COURSE, TYPE B |
| 40500300 | 242 | TON | BITUMINOUS MIXTURE COMPLETE |
| 40600100 | 549 | GALLON | BITUMINOUS MATERIALS (PRIME COAT) |
| 48101200 | 140 | TON | AGGREGATE SHOULDERS, TYPE B |
| 50100100 | 1 | EACH | REMOVAL OF EXISTING STRUCTURES |
| 50800105 | 37450 | POUND | REINFORCEMENT BARS |
| 51500100 | 1 | EACH | NAME PLATES |
| 54003000 | 224.4 | CU YD | CONCRETE BOX CULVERTS |
| 54200220 | 64 | FOOT | PIPE CULVERTS, CLASS D, TYPE 1-15" |
| 67100100 | 1 | LS | MOBILIZATION |
| Δ78001110 | 2200 | FOOT | PAINT PAVEMENT MARKING LINE - 4" |
| *20005400 | 270 | TON | BREAKER RUN CRUSHED STONE |

STANDARDS

- 000001-04 STANDARD SYMBOLS, ABBREVIATIONS & PATTERNS
- 280001-02 TEMPORARY EROSION CONTROL SYSTEMS
- *515001-02 DETAIL OF NAME PLATE FOR BRIDGES
- 702001-06 TRAFFIC CONTROL DEVICES
- 780001-01 TYPICAL PAVEMENT MARKINGS
- BLR-21-6 TYPICAL APPLICATION OF TRAFFIC CONTROL DEVICES
- BLR-22-4 TYPICAL APPLICATION OF TRAFFIC CONTROL DEVICES

BRIDGE REPLACEMENT & REHABILITATION PROGRAM

**SECTION 04-00162-00-BR
STEPHENSON COUNTY
PROJECT NO. BRS-40(112)
2006**

CONSTRUCTION TYPE CODE - X028 - 2A

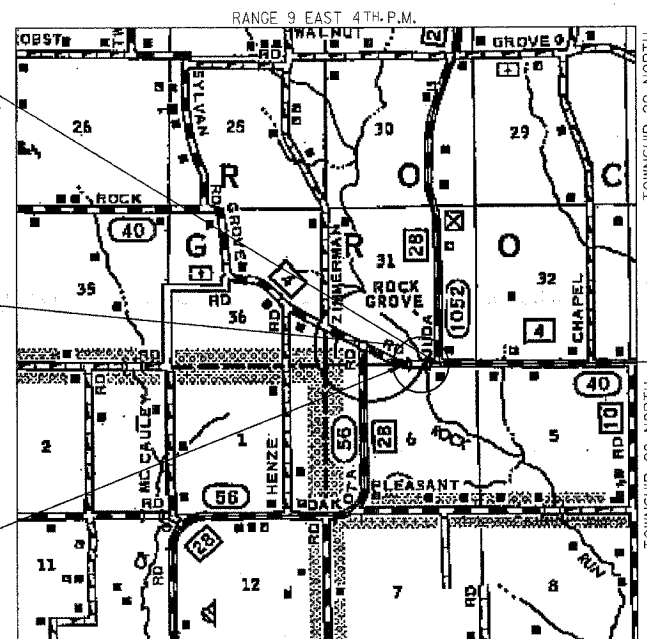
*SEE SPECIAL PROVISIONS
ΔSPECIALTY ITEMS

NET LENGTH 550 FEET = .010 MILES

SECTION ENDS
STA. 41+00

EXISTING STRUCTURE: S.N. 089-3000
REINFORCED CONCRETE SLAB ON
CLOSED REINFORCED CONCRETE
ABUTMENTS. STA. 37+73. SKEWED 0°.

SECTION BEGINS
STA. 35+50



PROPOSED STRUCTURE: S.N. 089-5130
A TRIPLE BARREL (13'-6" x 8') REINFORCED CONCRETE
BOX CULVERT AT STA. 37+73, SKEWED 0°
50' O.-O. OF HEADWALLS.

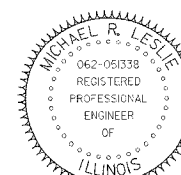
ATTENTION CONTRACTORS

THE ILLINOIS DEPARTMENT OF TRANSPORTATION
BUREAU OF MATERIALS AND PHYSICAL RESEARCH,
"PROJECT PROCEDURES GUIDE"
IS APPLICABLE TO THIS PROJECT.

JOB NO. C-92-073-05
CONTRACT NO. 85375
ROAD CLASSIFICATION: MAJOR COLLECTOR RURAL
ADT 676 (2006), 825 (2016) 2% TRUCKS
DESIGN SPEED: 50 MPH
RURAL BLR



CALL J.U.L.I.E.
BEFORE YOU DIG
800-892-0123



Michael R. Leslie
DATE: 1/23/06
EXPIRES 11/30/07

| | | |
|---|---------------------|--|
| APPROVED | 1/23 | 20 06 |
| | <i>Chris Sabell</i> | LOCAL AGENCY OFFICIAL |
| PASSED | February 8 | 20 06 |
| | <i>John M. ...</i> | DISTRICT ENGINEER OF LOCAL ROADS & STREETS |
| APPROVED FOR BIDDING | February 8 | 20 06 |
| | <i>Angelo ...</i> | STRUCT. ENGINEER |
| STATE OF ILLINOIS DEPARTMENT OF TRANSPORTATION | | |