

SECTION	COUNTY	TOTAL SHEETS	SHEET NO.
04-00162-00 BR	STEPHENSON	7	2
STA. 35+50 TO STA. 41+00			
FED. ROAD DIST. NO.	ILLINOIS	FED. AID PROJECT	

GENERAL NOTES

Existing Structures (Including Foundations, Walls, Cisterns, Wells Or Other Underground Structures) Within The Right Of Way Shall Be Removed In Accordance With Article 501.02 And 501.03 Of The Standard Specifications, Without Additional Compensation, Unless Otherwise Noted In The Plans Or Special Provisions.

The Contractor Shall Seed All Disturbed Areas Within The Project Limits.

No Overhaul Has Been Computed And None Shall Be Paid For From Any Source.

The Final Top Four Inches Of Soil In Any Right-Of-Way Area Disturbed By The Contractor Must Be A Cohesive Soil Capable Of Supporting Vegetation.

The New Number For This Structure Will Be S.N. 089-5130.

The Contractor Shall Be Responsible For Protecting Utility Property During Construction Operations As Outlined In Article 107.31 Of The Standard Specifications.

The Utilities Located Within The Project Limits Or Immediately Adjacent To The Project Construction Limits Include:

Comed
123 Energy Ave.
Rockford, IL. 61109

Verizon North, Inc.
302 West Main St.
Freeport, IL. 61032

NICOR Gas
4651 Linden Road
Rockford, IL. 61109

A Minimum Of 48 Hours Advance Notice Is Required For Non-Emergency Work.

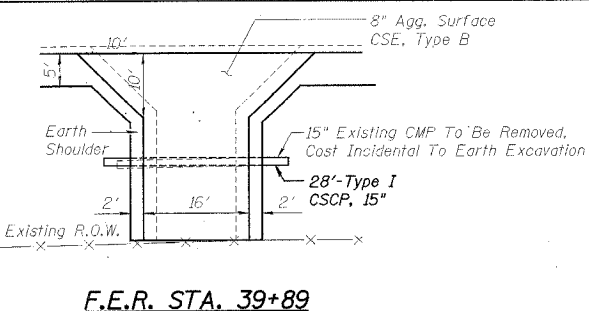
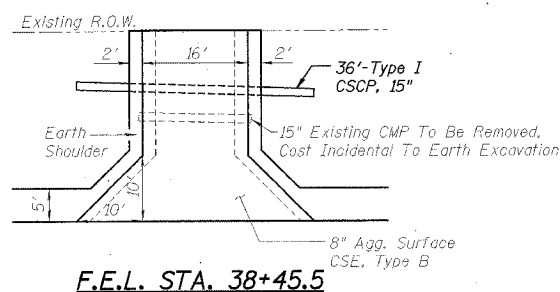
A Nationwide 404 Permit Has Been Issued For This Project And The Conditions Of That Permit Must Be Adhered To.

When Mulch With Emulsified Asphalt Is Applied, It Will Be The Contractor's Responsibility To Cover Or Protect All Traffic Signs, Guardrail And Curbs. Any Signs, Guardrail Or Curbs Which Become Covered With Asphaltic Material Shall Be Cleaned By The Contractor At His Own Expense.

Where Section Or Subsection Monuments Are Encountered, The Engineer Shall Be Notified Before Such Monuments Are Removed. The Contractor Shall Protect And Carefully Preserve All Property Markers, Monuments And Right-Of-Way Pins Until The Owner, An Authorized Surveyor, Or Agent Has Witnessed Or Otherwise Referenced Their Location.

Existing Mail Boxes, Street Signs And Traffic Signs That Are Within The Construction Limits Shall Be Removed And Reset By The Contractor. Cost Of Removing And Resetting To Be Included In The Contract Unit Price Bid Per Cubic Yard For Earth Excavation.

Bituminous Concrete Removal Not On A Rigid Pavement Shall Be Incidental To Earth Excavation.



SCHEDULE OF QUANTITIES

SEEDING CLASS 2 (SPECIAL)

LOCATION	ACRE	REMARKS
LT & RT 35+50 - 41+00	0.75 ACRES	

SEEDING CLASS 1

LOCATION	ACRE	REMARKS
LT & RT 35+50 - 41+00	0.75 ACRES	TEMPORARY SEEDING AS REQUIRED

EROSION CONTROL BLANKET

LOCATION	SQ YD	REMARKS
LT. & RT. STA. 35+50 - 37+45	260	
LT. & RT. STA. 37+45 - 37+60	55	AROUND WINGS
LT. & RT. STA. 37+90 - 38+00	45	AROUND WINGS
LT. & RT. STA. 38+00 - 41+00	400	
TOTAL 760 SQ YD		

TEMPORARY DITCH CHECK

LOCATION	EACH	REMARKS
LT. & RT. STA. 36+00	2	
LT. & RT. STA. 37+00	2	
RT. STA. 38+50	1	
LT. STA. 38+75	1	
RT. STA. 39+50	1	
LT. STA. 39+75	1	
RT. STA. 40+50	1	
LT. STA. 40+75	1	
TOTAL 10 EACH		

AGGREGATE BASE COURSE, TYPE B

LOCATION	TON	REMARKS
STA. 35+50 TO 36+00	75	10" COMPACTED, TAPER
STA. 36+00 TO 40+50	683	10" COMPACTED
STA. 40+50 TO 41+00	75	10" COMPACTED, TAPER
TOTAL 833 TON		

AGGREGATE SURFACE COURSE, TYPE B

LOCATION	TON	REMARKS
LT. STA. 38+45.5	20	FEL
RT. STA. 39+89	20	FER
TOTAL 40 TON		

BITUMINOUS MIXTURE COMPLETE

LOCATION	TON	REMARKS
STA. 35+50 TO 36+00	22	TAPER
STA. 36+00 TO 40+50	198	
STA. 40+50 TO 41+00	22	TAPER
TOTAL 242 TON		

BITUMINOUS MATERIALS (PRIME COAT)

LOCATION	GALLONS	REMARKS
STA. 35+50 TO 36+00	49	0.375 GAL/SY
STA. 36+00 TO 40+50	450	0.375 GAL/SY
STA. 40+50 TO 41+00	50	0.375 GAL/SY
TOTAL 549 GALLON		

AGGREGATE SHOULDER, TYPE B

LOCATION	TON	REMARKS
LT. STA. 35+50 TO 41+00	70	4" COMPACTED
RT. STA. 35+50 TO 41+00	70	4" COMPACTED
TOTAL 140 TON		

PIPE CULVERT, TYPE I, CLASS D, 15"

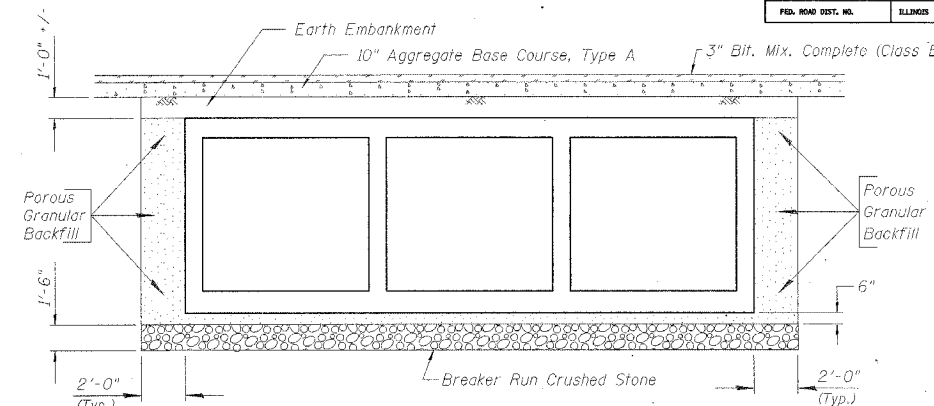
LOCATION	FOOT	REMARKS
LT. STA. 38+27.5 - 38+63.5	36	
RT. STA. 39+75 - 40+03	28	
TOTAL 64 FOOT		

PAINT PAVEMENT MARKING LINE - 4"

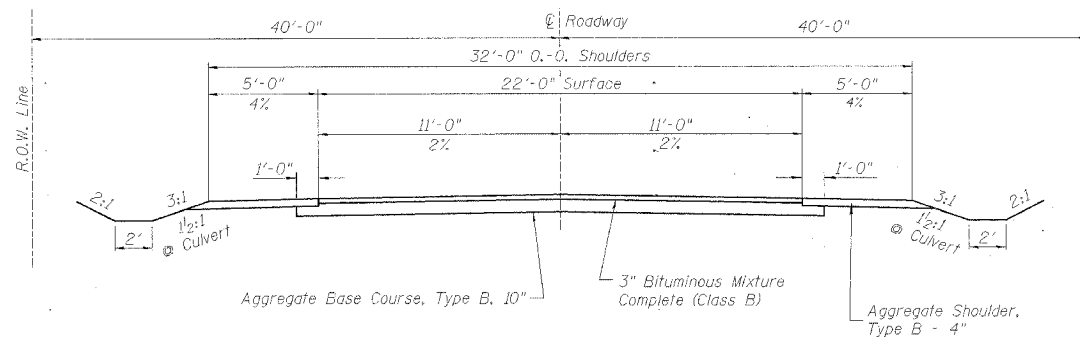
LOCATION	FOOT	REMARKS
LT. & RT. STA. 35+50 TO 41+00	1100	SOLID WHITE
STA. 35+50 TO 41+00	1100	DOUBLE YELLOW
TOTAL 2200 FOOT		

PAVEMENT STRUCTURAL DESIGN - ROCK GROVE ROAD

STRUCTURAL DESIGN TRAFFIC (S.D.T.) = YEAR 2016
 CLASS III STREET
 80,000# TRUCK DESIGN
 E_{RI} : (ASSUMED) 3 ksi
 TF = 0.04
 HMA MIX TEMP. 72°F
 HMA E_{AC} = 655 ksi
 HMA DESIGN STRAIN 367 microstrain
 USE
 3" BITUMINOUS MIXTURE COMPLETE
 10" AGGREGATE BASE, TYPE B

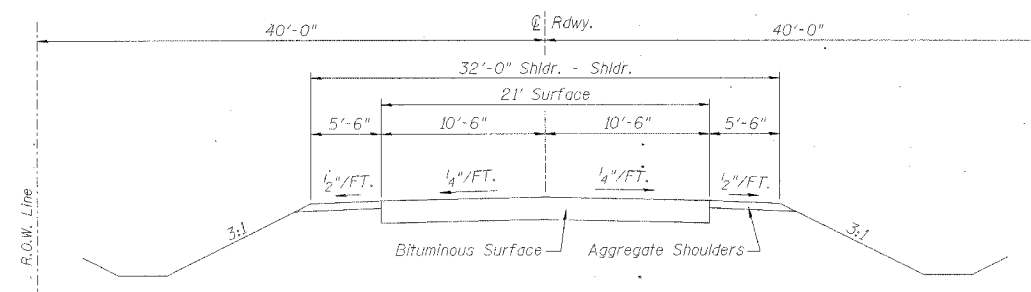


PAY LIMITS OF POROUS GRANULAR BACKFILL & BREAKER RUN CRUSHED STONE

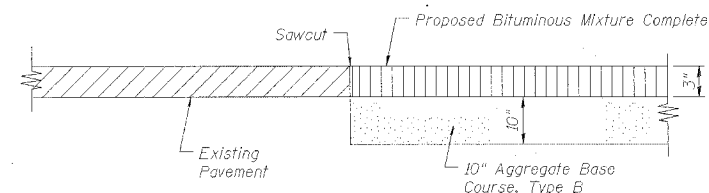


TYPICAL SECTION

Sta. 35+50 to Sta. 41+00
 Highway Classification: Major Collector (Rural)
 Design Speed: 50 MPH



EXISTING TYPICAL SECTION



TYPICAL CORE JOINT DETAIL

GENERAL NOTES, SCHEDULES, AND TYPICAL SECTIONS
 ROCK GROVE ROAD OVER ROCK RUN CREEK
 SECTION 04-00162-00-BR
 STA. 37+73 (S.N. 089-5130)
 STEPHENSON COUNTY