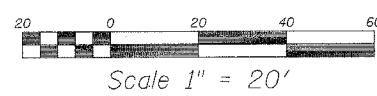
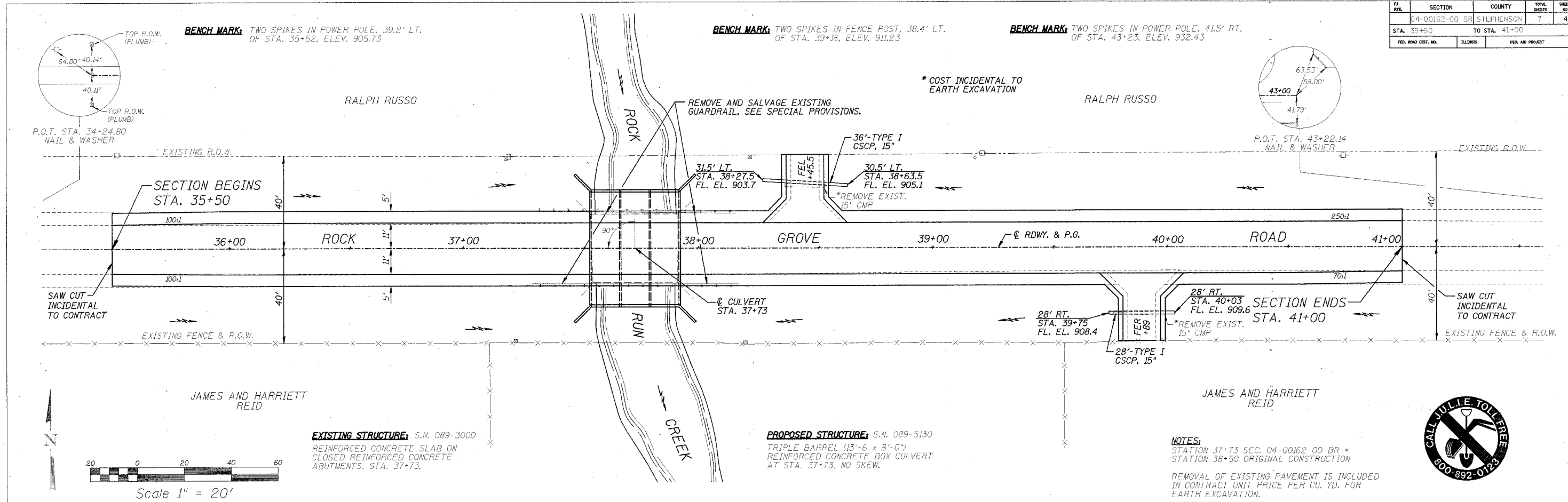


FA RITE	SECTION	COUNTY	TOTAL SHEETS	SHEET NO.
04-00162-00	BR	STEPHENSON	7	4
STA. 35+50		TO STA. 41+00		
FED. ROAD DIST. NO.		BLDGMS	FED. AID PROJECT	



EXISTING STRUCTURE: S.N. 089-3000
 REINFORCED CONCRETE SLAB ON
 CLOSED REINFORCED CONCRETE
 ABUTMENTS. STA. 37+73.

PROPOSED STRUCTURE: S.N. 089-5130
 TRIPLE BARREL (13'-6 x 8'-0")
 REINFORCED CONCRETE BOX CULVERT
 AT STA. 37+73, NO SKEW.

NOTES:
 STATION 37+73 SEC. 04-00162-00-BR =
 STATION 38+50 ORIGINAL CONSTRUCTION
 REMOVAL OF EXISTING PAVEMENT IS INCLUDED
 IN CONTRACT UNIT PRICE PER CU. YD. FOR
 EARTH EXCAVATION.

