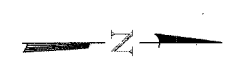
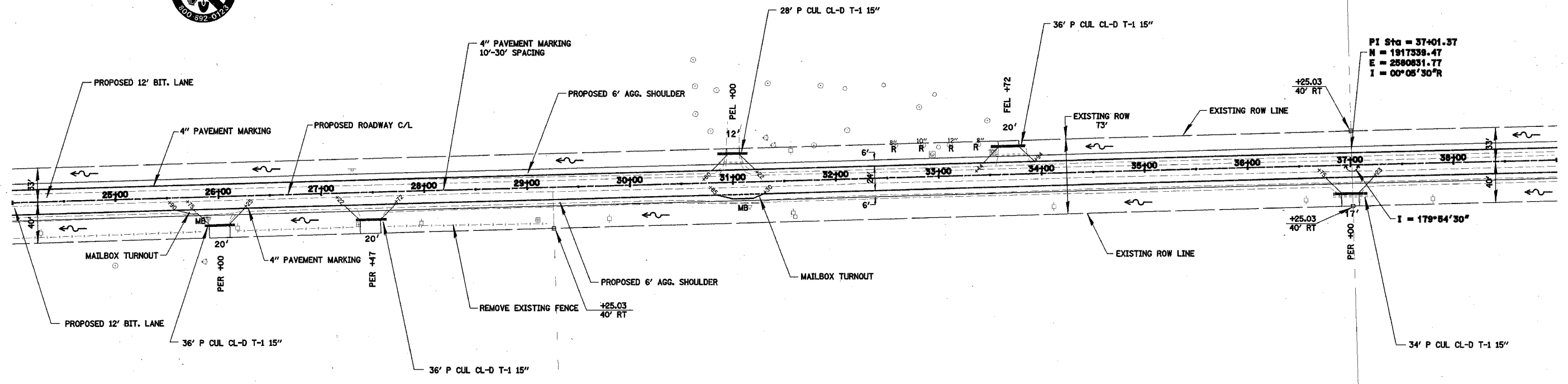


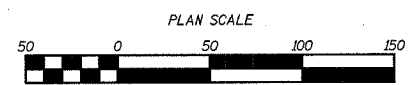
F.A.I.D. RTE.	SECTION	COUNTY	TOTAL SHEETS	SHEET NO.
89	04-00229-00-FP	OGLE	42	8
STA. 24+00		TO STA. 39+00		
FED. ROAD DIST. NO. ILLINOIS		FED. AID PROJECT		



HARRIS TRUST AND SAVINGS BANK



PI Sta = 37+01.37  
 N = 1917339.47  
 E = 2580831.77  
 I = 00°08'30"R

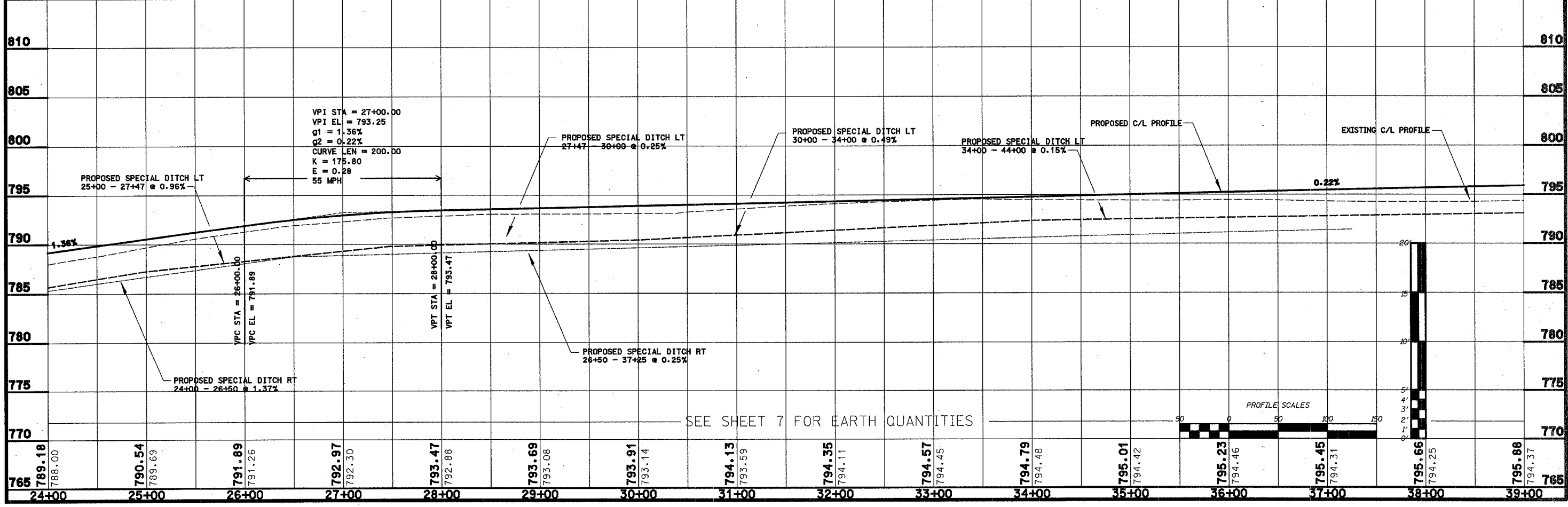


WILLIAM R. KUEHL &  
 TERESA A. KUEHL

THOMAS O. HILL &  
 NANCY L. HILL

JOHN W. KENNAY &  
 CYNTHIA E. KENNAY

S. TRANS. 1053004 RCP02001



SEE SHEET 7 FOR EARTH QUANTITIES

