

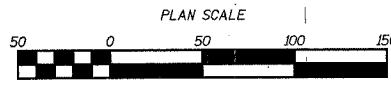
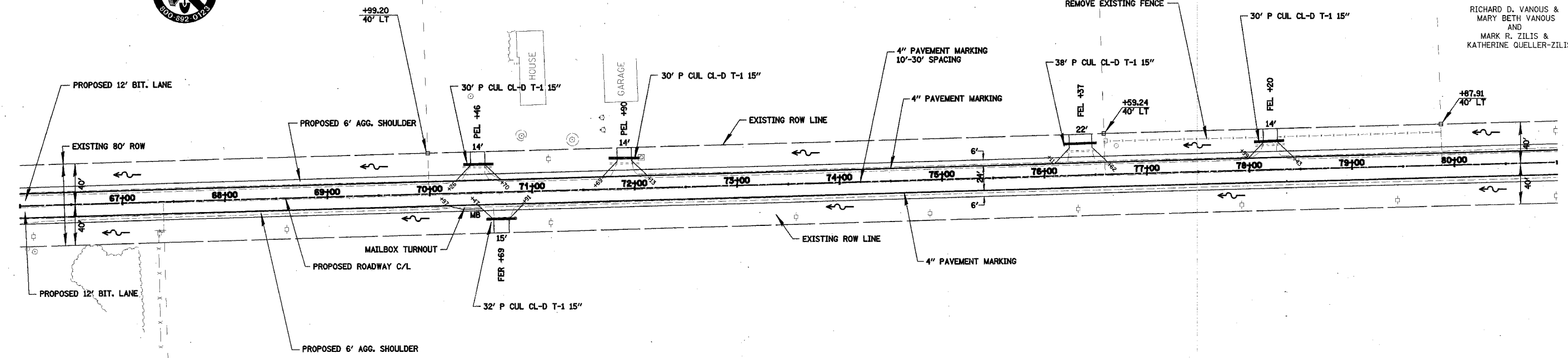
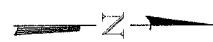
F.A.U. RTE.	SECTION	COUNTY	TOTAL SHEETS	SHEET NO.
89	04-00229-00-FP	OGLE	42	11
STA. 66+00		TO STA. 81+00		
FED. ROAD DIST. NO.		ILLINOIS FED. AID PROJECT		

CARL A. SCHABACKER & LULA MAE SCHABACKER

LOREN D. FURMAN & RUTH A. FURMAN

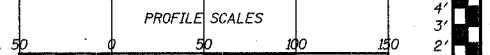
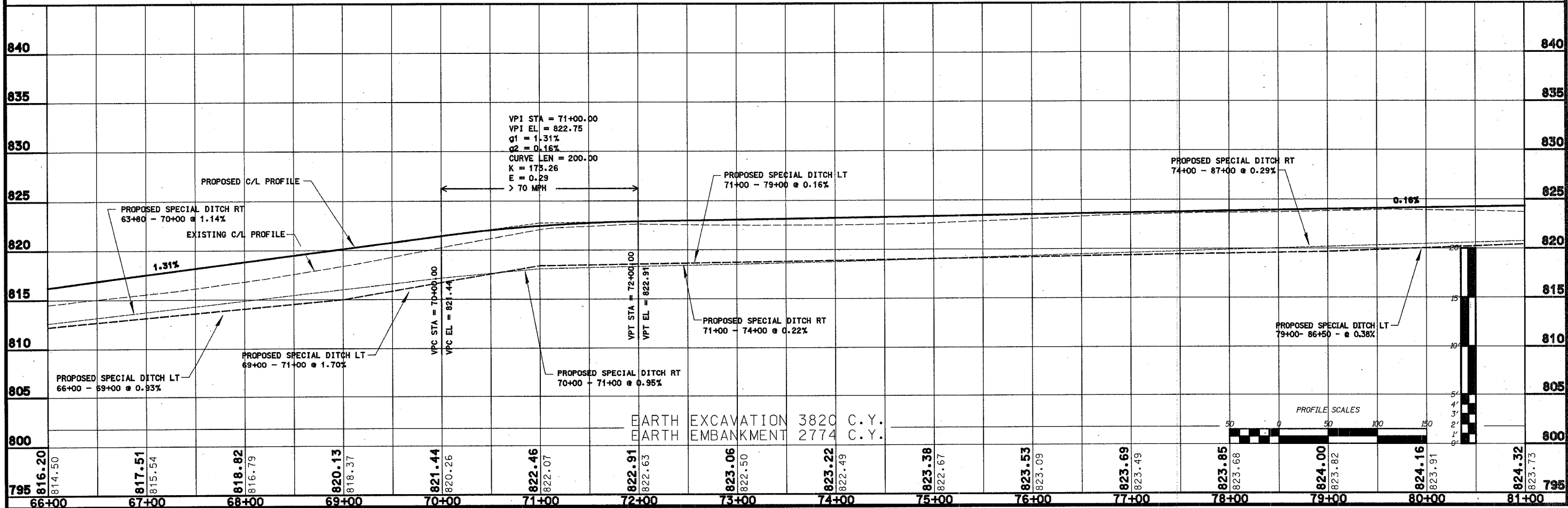
E. I. DUPONT DE NEMOURS AND COMPANY

RICHARD D. VANOUS & MARY BETH VANOUS AND MARK R. ZILIS & KATHERINE QUELLER-ZILIS



ST. PATRICK'S CATHOLIC CHURCH

S. TRANS. 1053D04 - ROP05001



795	816.20	817.51	818.82	820.13	821.44	822.46	822.91	823.06	823.22	823.38	823.53	823.69	823.85	824.00	824.16	824.32	795
	814.50	815.54	816.79	818.37	820.26	822.07	822.63	822.50	822.49	822.67	823.09	823.49	823.68	823.82	823.91	823.73	
	66+00	67+00	68+00	69+00	70+00	71+00	72+00	73+00	74+00	75+00	76+00	77+00	78+00	79+00	80+00	81+00	