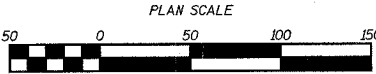
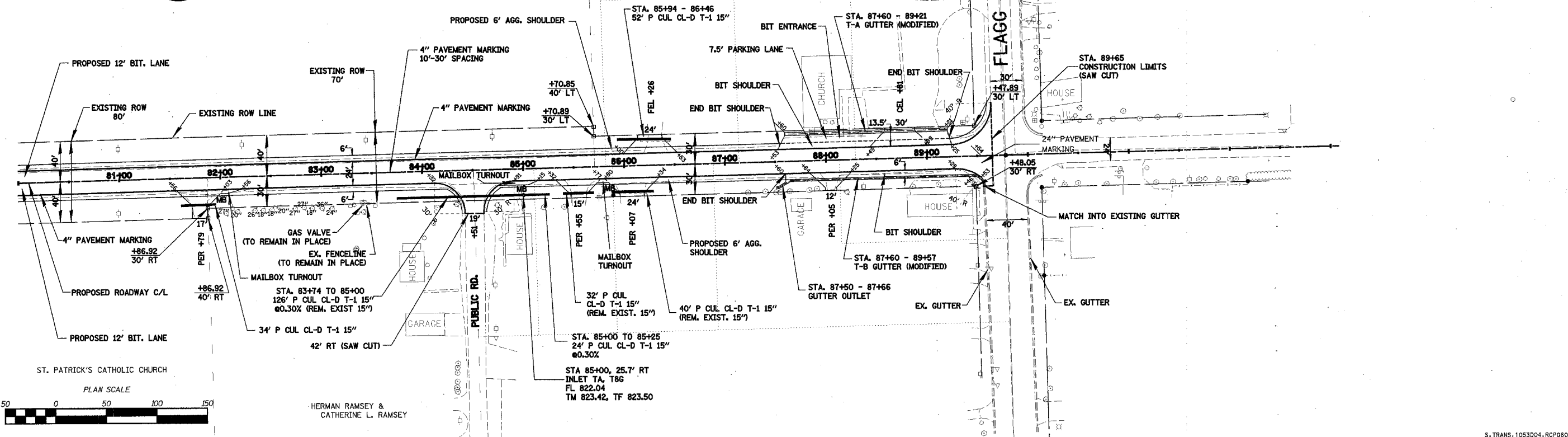


F.A.D. RTE.	SECTION	COUNTY	TOTAL SHEETS	SHEET NO.
89	04-00229-00-FP	OGLE	42	12
STA. 80+00		TO STA. 89+65		
FED. ROAD DIST. NO. ILLINOIS FED. AID PROJECT				



RICHARD D. VANOUS &
MARY BETH VANOUS
AND
MARK R. ZILIS &
KATHERINE QUELLER-ZILIS



HERMAN RAMSEY &
CATHERINE L. RAMSEY

S. TRANS. 1053D04, RCP06001

