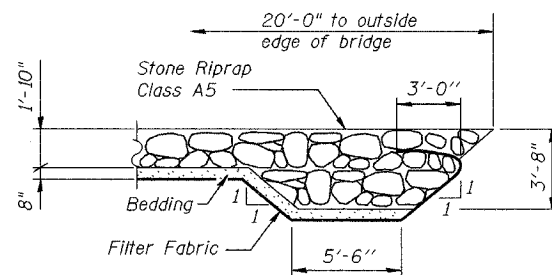
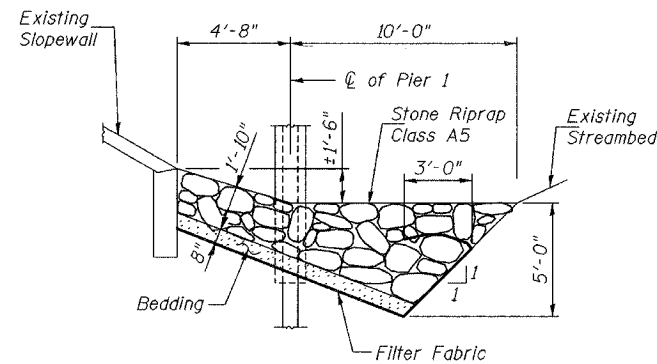


GENERAL NOTES

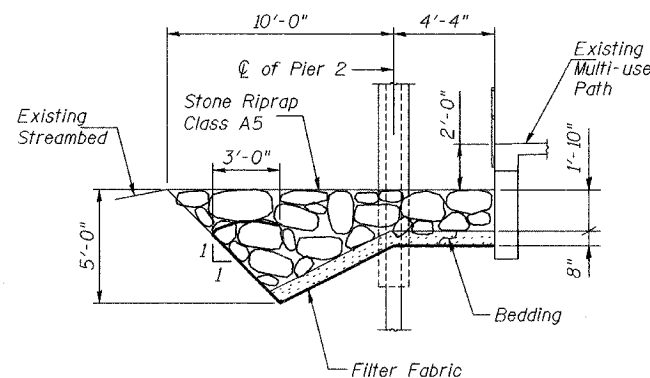
1. Fasteners shall be high strength bolts (ASTM A325) unless otherwise noted.
2. Calculated weight of Structural Steel = 4280 Lbs.
3. All structural steel shall be AASHTO M270 Grade 36.
4. The structural steel bearing plates of the Elastromeric Bearing Assembly shall conform to the requirements of AASHTO M270 Grade 36.
5. Reinforcement bars shall conform to the requirements of AASHTO M31, M42 or M53 Grade 60.
6. Slope wall shall be reinforced with welded wire fabric, 6"x6" - W4.0 x W4.0, weighting 58 lbs. per 100 sq. ft.
7. Layout of slope protection system may be varied in the field to suit ground conditions as directed by the Engineer.
8. Plan dimension and details relative to existing structure have been taken from existing plans and are subject to nominal construction variations. It shall be the Contractor's responsibility to verify such dimensions and details in the field and make necessary approved adjustments prior to construction or ordering of materials. Such variations shall not be cause for additional compensation for a change in the scope of the work, however, the Contractor will be paid for the quantity actually furnished at the unit price for the work.
9. The existing structural steel coating contains lead. The Contractor shall take appropriate precautions to deal with the presence of lead on this project.
10. All Construction joints shall be bonded.
11. The Name Plate on the inside face of the southeast wingwall shall be removed and reinstalled. The cost of this work shall be included in the cost of Concrete Removal and Concrete Superstructure.
12. The new concrete for the wingwalls, abutment back walls and the parapet will be paid for as Concrete Superstructure.
13. Protective Coat shall be applied to the entire top surface of the deck, median, sidewalks, vertical faces of median curb and sidewalk curb, and the tops and inside vertical faces of the sidewalk parapets on the bridge.
14. The drilling and epoxy grouting of reinforcement bars shall conform to Section 584 of the Standard Specifications unless noted otherwise in this plan set. The drilling of the holes, furnishing of the epoxy grout and setting of the reinforcement bars in the epoxy grout will not be measured or paid for separately, but shall be considered as included in the unit price bid for Reinforcement Bars, Epoxy Coated.
15. The bearing reactions at each abutment are as follows:
 Dead Load = 14,000 lbs.
 Live Load = 26,000 lbs.
 Impact = 8,000 lbs.
 These loads do not include weight of any construction equipment or materials.



SECTION A-A



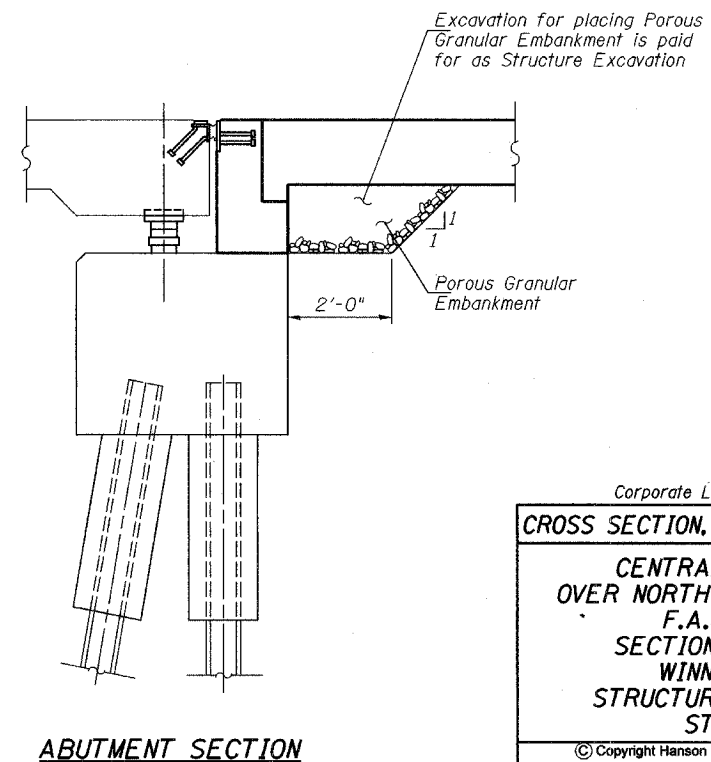
SECTION B-B



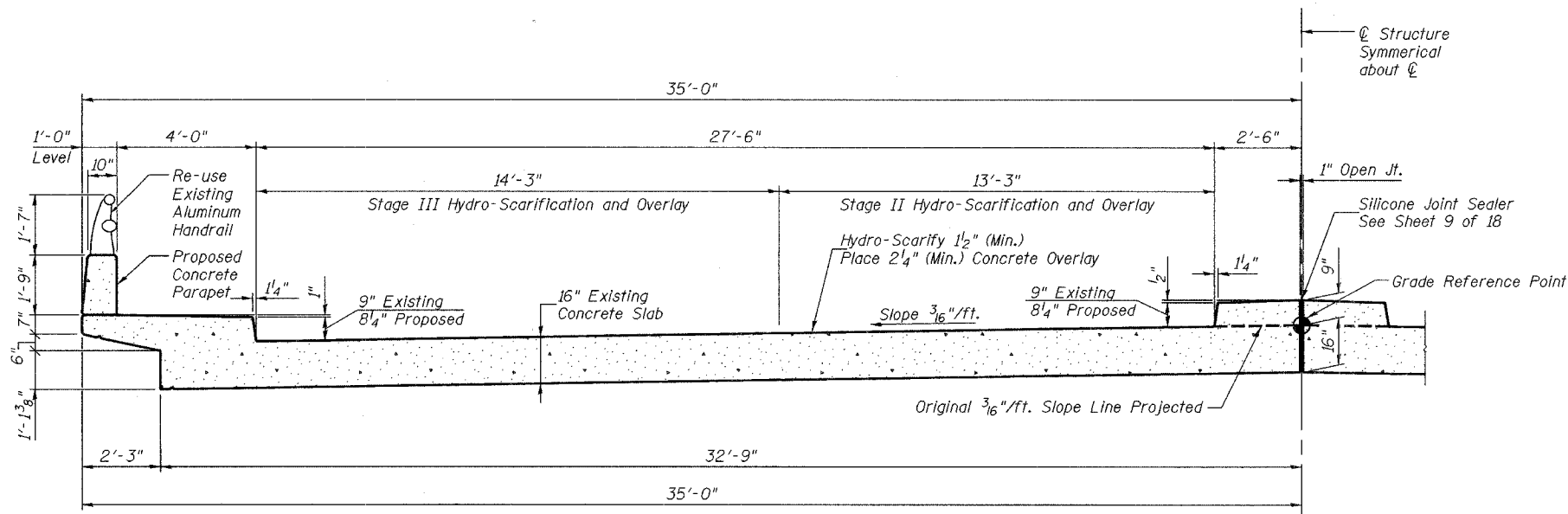
SECTION C-C

TOTAL BILL OF MATERIAL

ITEM	UNIT	SUPER	SUB	TOTAL
POROUS GRANULAR EMBANKMENT	CU. YD.		15	15
STONE RIPRAP, CLASS A5	SQ. YD.		375	375
FILTER FABRIC FOR RIPRAP	SQ. YD.		375	375
BRIDGE APPROACH PAVEMENT (SPECIAL)	SQ. YD.	214		214
APPROACH SLAB REMOVAL	SQ. YD.	428		428
CONCRETE REMOVAL	CU. YD.	10.2	19.0	29.2
STRUCTURE EXCAVATION	CU. YD.		27	27
PREFORMED JOINT SEAL 2 1/2"	FOOT	144		144
CONCRETE SUPERSTRUCTURE	CU. YD.	11.8	17.5	29.3
BRIDGE DECK GROOVING	SQ. YD.	561		561
PROTECTIVE COAT	SQ. YD.	836		836
ELASTOMERIC BEARING ASSEMBLY, TYPE 1	EACH	28		28
FORMED CONCRETE REPAIR DEPTH < 5"	SQ. FT.	140		140
FORMED CONCRETE REPAIR DEPTH > 5"	SQ. FT.	60		60
FURNISH AND ERECT STRUCTURAL STEEL	POUND	4280		4280
JACK AND REMOVE EXISTING BEARINGS	EACH	28		28
REINFORCEMENT BARS, EPOXY COATED	POUND	860	2360	3220
SILICONE SEALER JOINT, 1"	FOOT	100		100
BRIDGE DECK MICROSILICA CONCRETE OVERLAY, 2.25"	SQ. YD.	607		607
BRIDGE DECK HYDRO-SCARIFICATION, 1.5"	SQ. YD.	607		607
CONTROLLED LOW-STRENGTH MATERIAL	CU. YD.		150	150
DECK DRAIN EXTENSIONS	EACH	24		24
CONCRETE SLOPEWALL REMOVAL	SQ. FT.		132	132
CONCRETE SLOPEWALL	SQ. FT.		132	132
EPOXY MORTAR REPAIR (DEPTH LESS THAN 1.5")	SQ. FT.	933		933
PLUG EXISTING DRAINS	EACH	4		4
PIER COLUMN ENCASEMENT REMOVAL & REPAIR	FOOT		72	72
CORE DRILL HOLES IN SLOPEWALL	EACH		16	16
CONCRETE TOEWALL REPAIR	FOOT		76	76
REMOVING AND RE-ERECTING EXISTING RAILING	FOOT	200		200
BAR SPLICERS	EACH		32	



ABUTMENT SECTION



PROPOSED CROSS SECTION

Corporate License Number 184-001-084

CROSS SECTION, GENERAL NOTES & DETAILS

CENTRAL AVENUE BRIDGE
 OVER NORTH FORK OF KENT CREEK
 F.A.U. ROUTE 5102
 SECTION 03-00336-00-BR
 WINNEBAGO COUNTY
 STRUCTURE NUMBER 101-3023
 STATION 13+45

© Copyright Hanson Professional Services Inc. 2005

JOB NO.	03R1809
DATE	4/28/06

11/20/02 AM
 01/30/2006
 11/03/05 03:31:09 Structural Steel - US 006-Cross-Section Detailing
 11/18/05
 12/13/05
 12/27/05
 LAYOUT
 DRAWN
 REVIEWED
 FLN
 MCH
 FLN