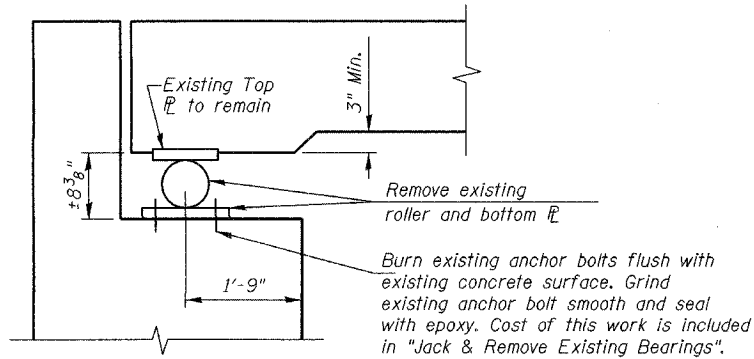
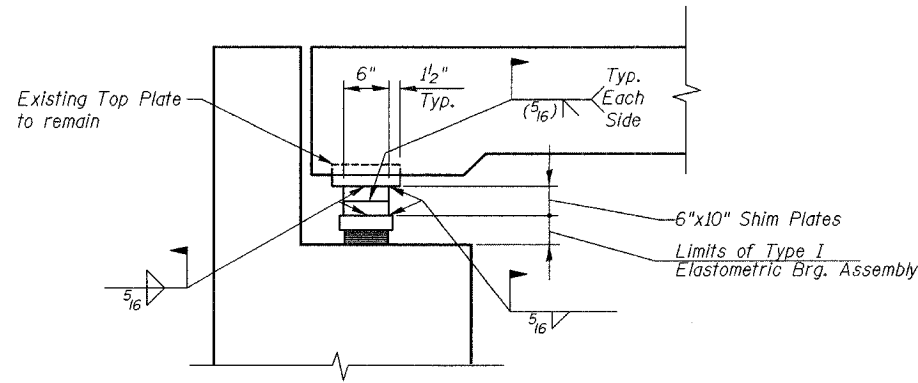


ROUTE NO.	SECTION	COUNTY	JOB NO.	SHEET NO.
F.A.U. 5102	*	WINNEBAGO	18	9
FED. ROAD DIST. NO. 7	ILLINOIS	FED. AID PROJECT	BHM-5099(64)	
* 03-00336-00-BR				



**EXISTING ABUTMENT BEARING**

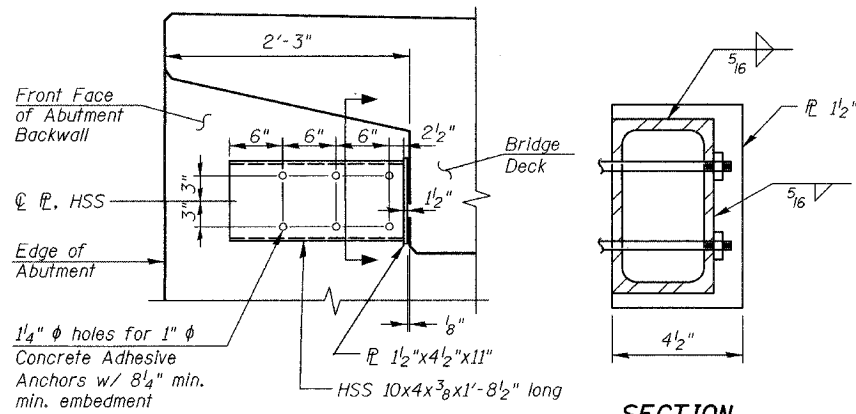


**NEW ABUTMENT BEARING**  
(28 Total)

**NOTES:**  
Prior to ordering any material the Contractor shall field verify all bearing heights and shim thickness dimensions.

Multiple plates (1/2" minimum thickness) may be welded together to obtain total required shim plate thickness.

Cost of shim plates is incidental to Elastomeric Bearing Assembly Type I.

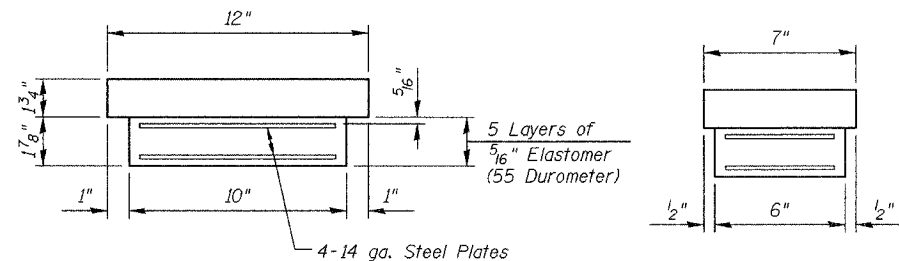


**ELEVATION**

**SECTION**

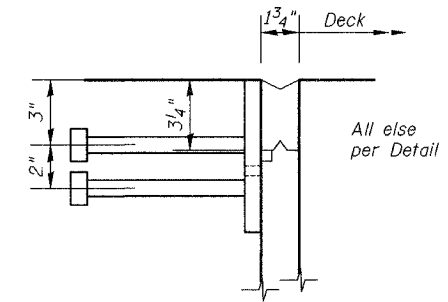
**HORIZONTAL SLAB RESTRAINT**

(4 Total)  
All steel items shall be galvanized

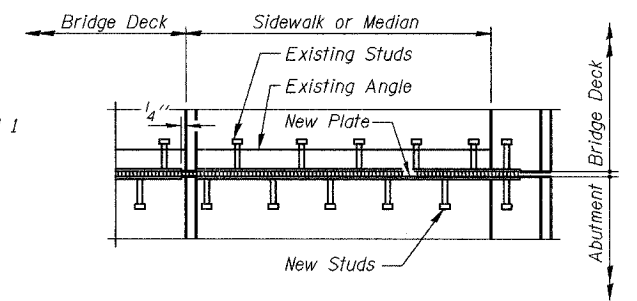


**ELASTOMERIC BEARING ASSEMBLY, TYPE I**

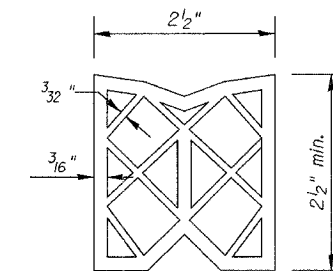
(28 Total)



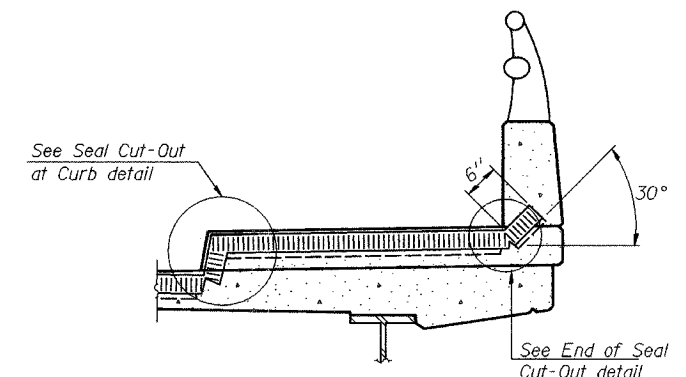
**DETAIL 2**  
(At Median)



**PLAN AT SIDEWALK OR MEDIAN**



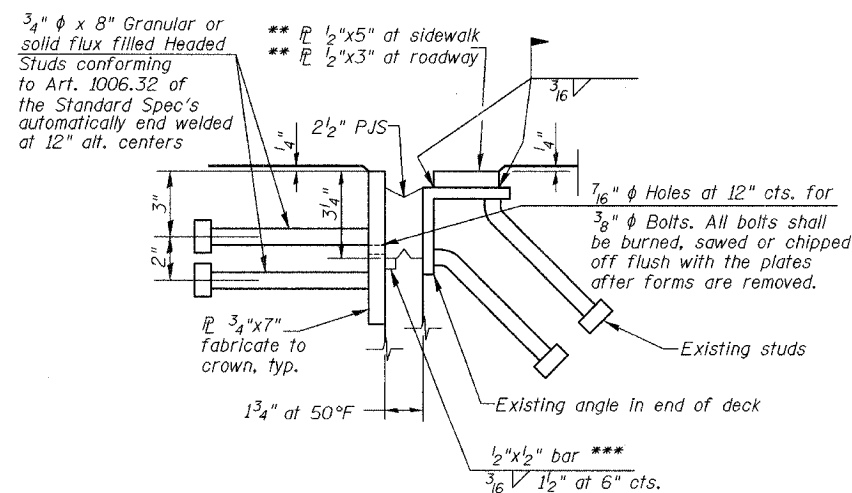
**PREFORMED JOINT SEAL**



**AT SIDEWALK OR MEDIAN\***

(Showing plate and seal)

\* Shorter plates with a single row of studs at 12" centers may be necessary on medians which are shallower than 9". See manufacturer's recommendation.

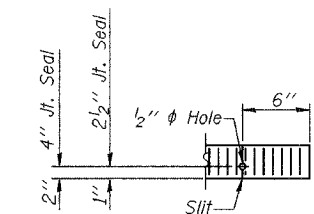


**DETAIL 1**

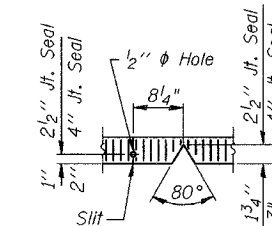
(At Roadway and Sidewalk)

\*\* Cut  $\bar{P}$  1/2" in sidewalk and median 1/4" short of the sidewalk and median faces.

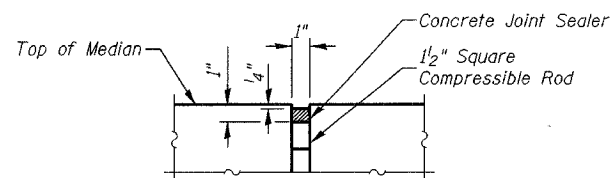
\*\*\* Cut retainer bars in sidewalk and median 6" short of the sidewalk and median faces.



**END OF SEAL CUT-OUT**



**SEAL CUT-OUT AT CURB**



**SILICONE JOINT SEALER**

(Longitudinal Joint in median at bridge)

1/18/01 AM 01/30/2006 I:\03\065\03R1809\Struct\Sheet\009-Super\Date-2.dwg

LAYOUT	FLN	11/21/05
DRAWN	NGM	12/09/05
REVIEWED	FLN	12/27/05

Corporate License Number 184-001-084

**SUPERSTRUCTURE DETAILS**

**CENTRAL AVENUE BRIDGE  
OVER NORTH FORK OF KENT CREEK  
F.A.U. ROUTE 5102  
SECTION 03-00336-00-BR  
WINNEBAGO COUNTY  
STRUCTURE NUMBER 101-3023  
STATION 13+45**

© Copyright Hanson Professional Services Inc. 2005



JOB NO.

03R1809

DATE

4/28/06