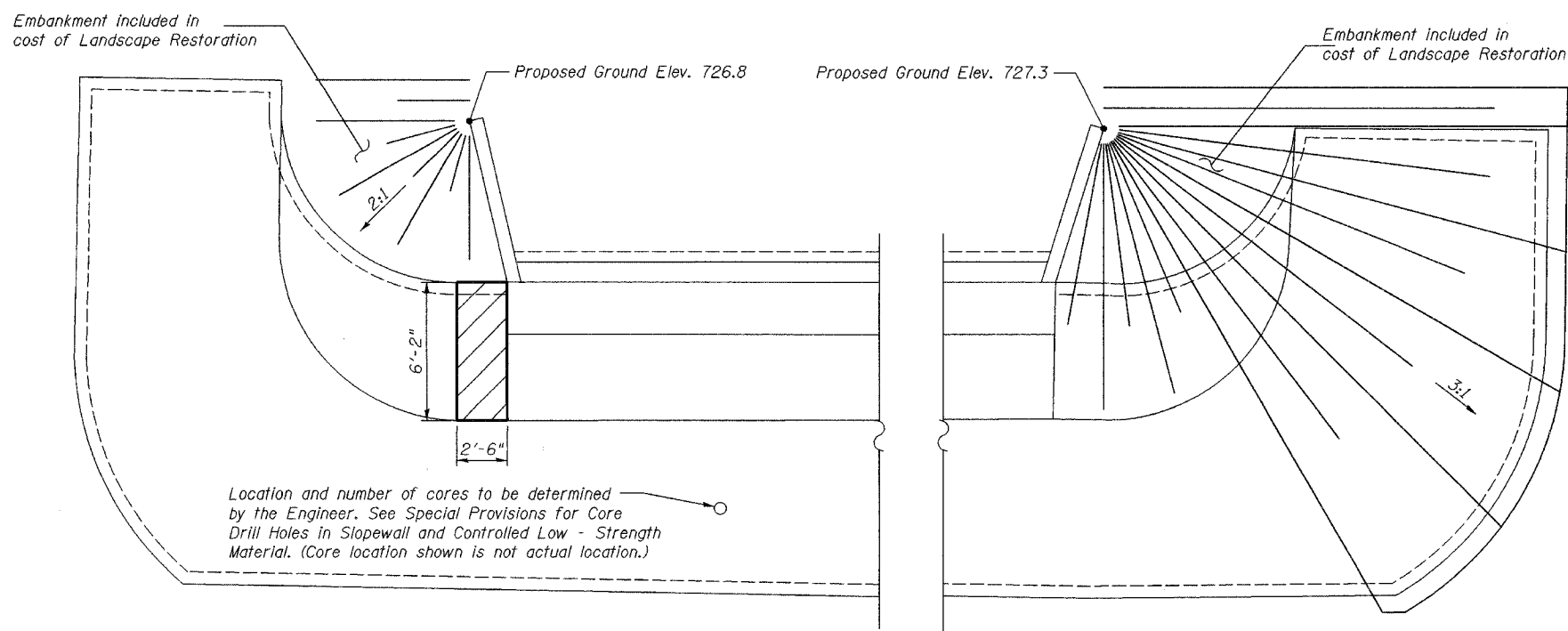
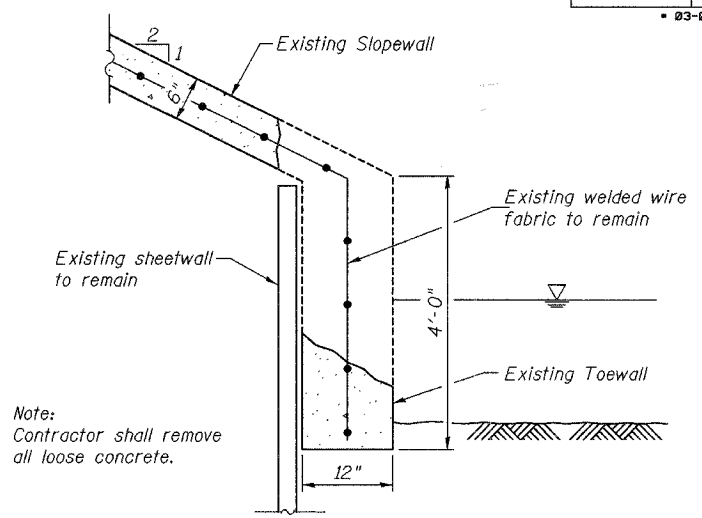


ROUTE NO.	SECTION	COUNTY	SHEETS	SHEET
F.A.U. 5102	*	WINNEBAGO	18	15
FED. ROAD DIST. NO. 7	ILLINOIS	FED. AID PROJECT	BHM-5099(164)	
* 03-00336-00-BR				



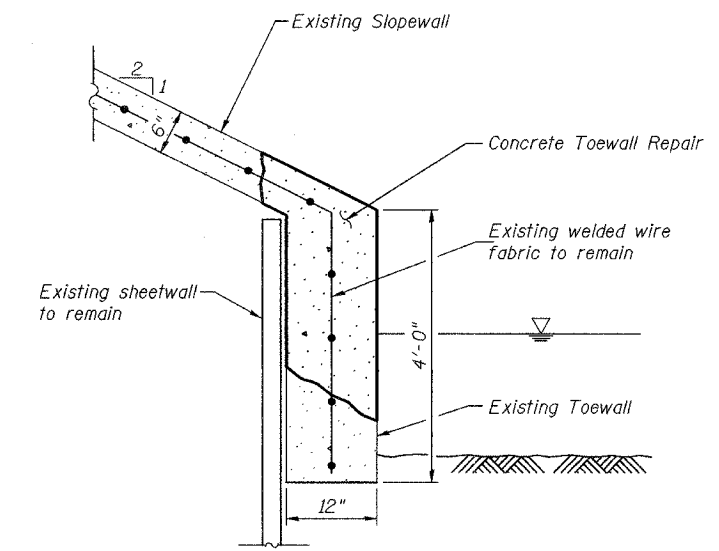
**NORTH SLOPEWALL PLAN**



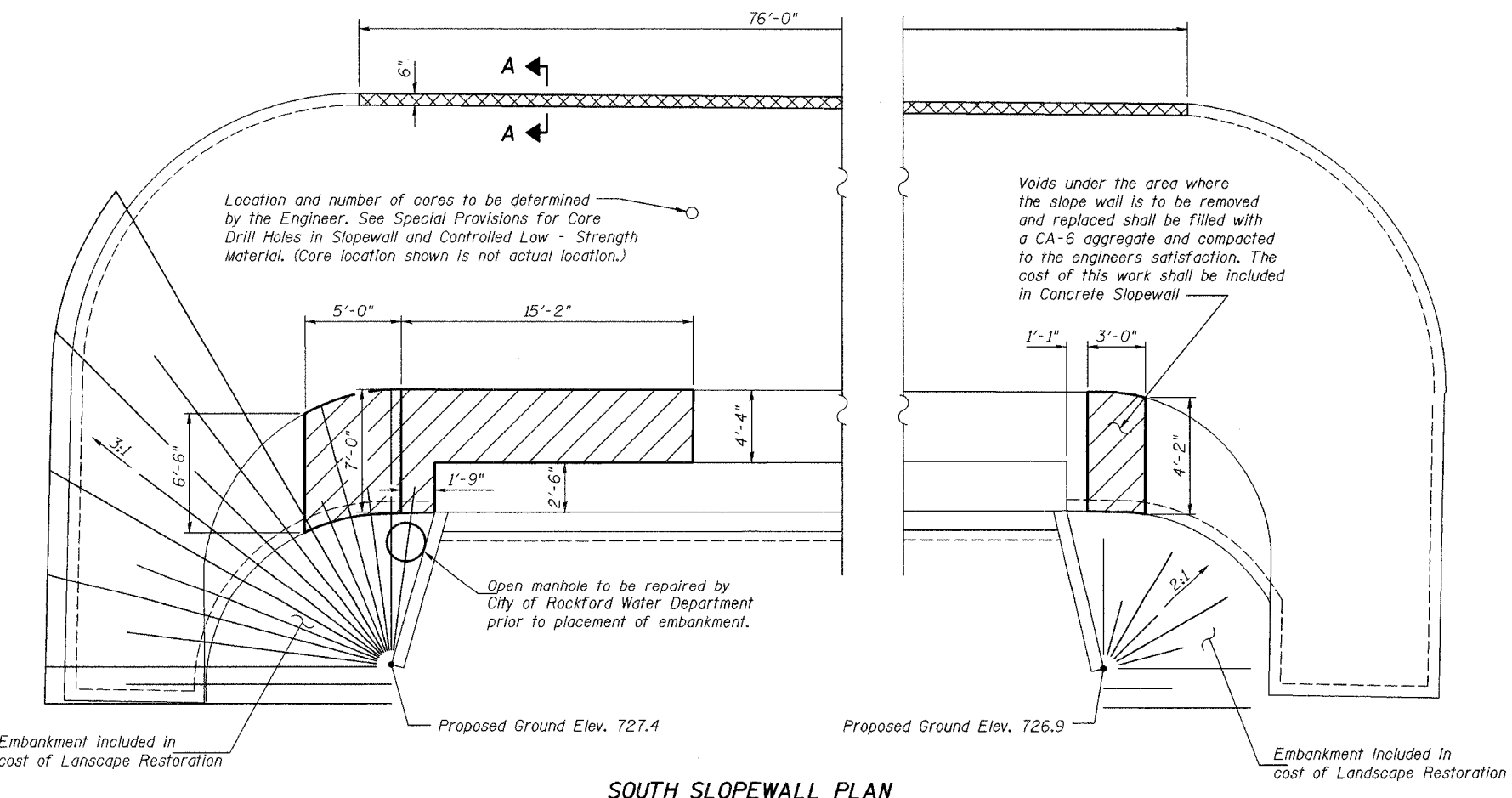
**SECTION A-A  
EXISTING TOEWALL CONDITION**

**BILL OF MATERIAL**

Item	Unit	Quantity
Controlled Low-Strength Material	Cu. Yd.	150
Concrete Slopewall Removal	Sq. Ft.	132
Concrete Slopewall	Sq. Ft.	132
Core Drill Holes in Slopewall	Each	16
Concrete Toewall Repair	Foot	76



**SECTION A-A  
CONCRETE TOEWALL REPAIR**



**SOUTH SLOPEWALL PLAN**

**LEGEND**

	Remove and Replace Slopewall
	Toe wall repair

Corporate License Number 184-001-084

**SLOPEWALL REPAIR DETAILS**

CENTRAL AVENUE BRIDGE  
OVER NORTH FORK OF KENT CREEK  
F.A.U. ROUTE 5102  
SECTION 03-00336-00-BR  
WINNEBAGO COUNTY  
STRUCTURE NUMBER 101-3023  
STATION 13+45

© Copyright Hanson Professional Services Inc. 2005

**HANSON**

JOB NO.  
03R1809  
DATE  
4/28/06

10:59:32 AM  
 01/30/2006  
 I:\03\085\03R1809\Struct\Sheet\05-05-Slopewall\Repair.dgn  
 LAYOUT 12/07/05  
 DRAWN MGH 12/08/05  
 REVIEWED FLN 12/27/05