

ROUTE NO.	SECTION	COUNTY	TOTAL SHEETS	SHEET NO.
MS 1090	*	BUREAU COUNTY	27	14
SECTION 01-00008-00-BR		ILLINOIS	FED. AID PROJECT	

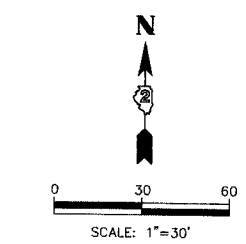
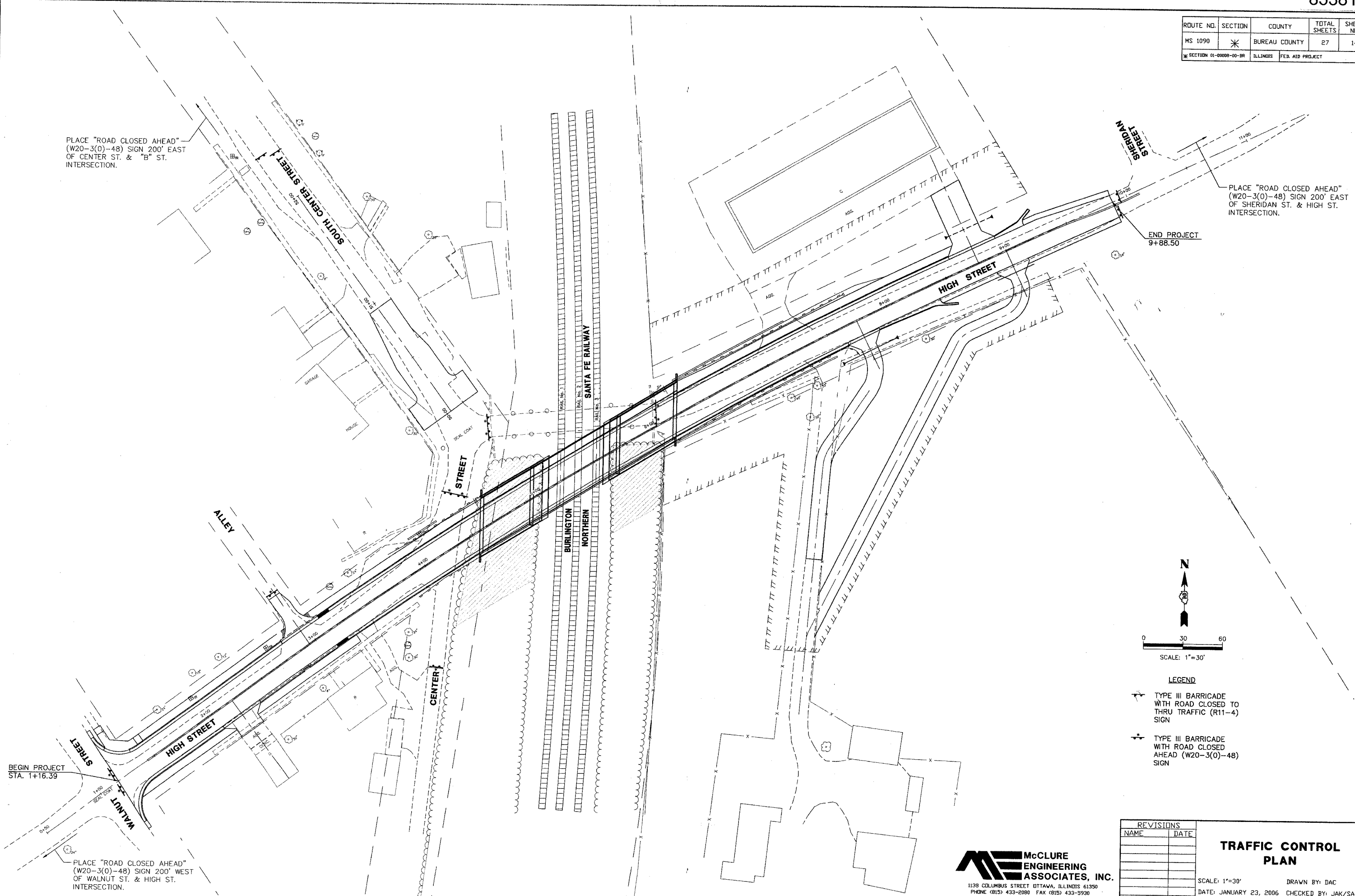
PLACE "ROAD CLOSED AHEAD"
(W20-3(0)-48) SIGN 200' EAST
OF CENTER ST. & "B" ST.
INTERSECTION.

PLACE "ROAD CLOSED AHEAD"
(W20-3(0)-48) SIGN 200' EAST
OF SHERIDAN ST. & HIGH ST.
INTERSECTION.

END PROJECT
9+88.50

BEGIN PROJECT
STA. 1+16.39

PLACE "ROAD CLOSED AHEAD"
(W20-3(0)-48) SIGN 200' WEST
OF WALNUT ST. & HIGH ST.
INTERSECTION.



- LEGEND**
- TYPE III BARRICADE WITH ROAD CLOSED TO THRU TRAFFIC (R11-4) SIGN
 - TYPE III BARRICADE WITH ROAD CLOSED AHEAD (W20-3(0)-48) SIGN

REVISIONS	
NAME	DATE

TRAFFIC CONTROL PLAN

SCALE: 1"=30' DRAWN BY: DAC
DATE: JANUARY 23, 2006 CHECKED BY: JAK/SAS

McCLURE ENGINEERING ASSOCIATES, INC.
1138 COLUMBUS STREET OTTAWA, ILLINOIS 61350
PHONE (815) 433-2080 FAX (815) 433-5930
DESIGN FIRM LICENSE: ILLINOIS #184-000816
COPYRIGHT 2006 BY McCLURE ENGINEERING ASSOCIATES, INC.