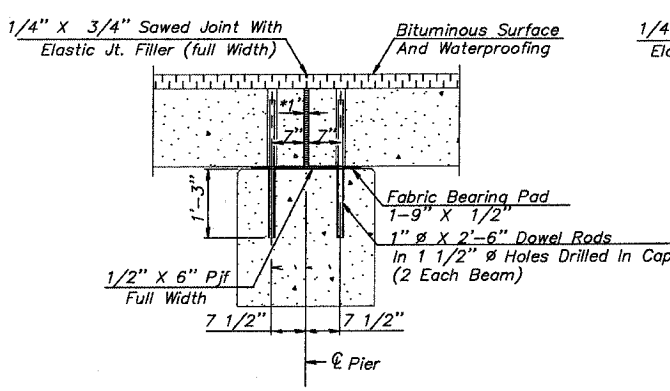
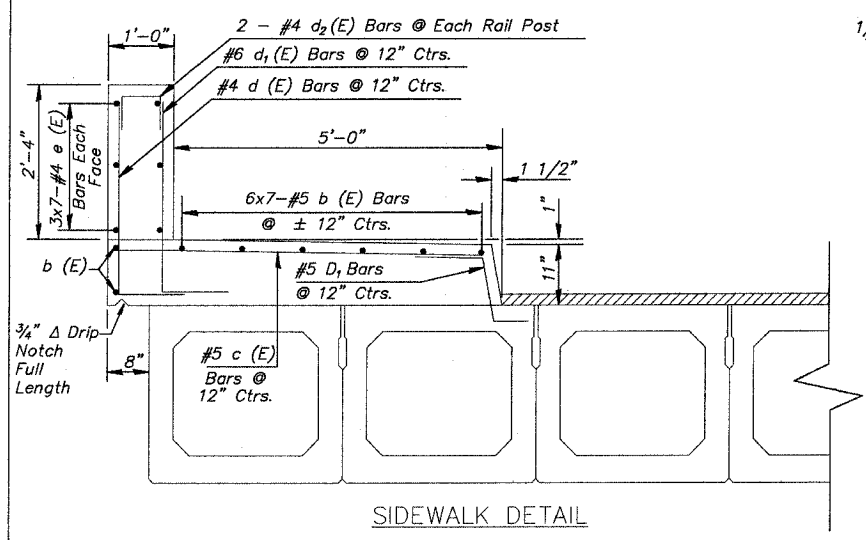


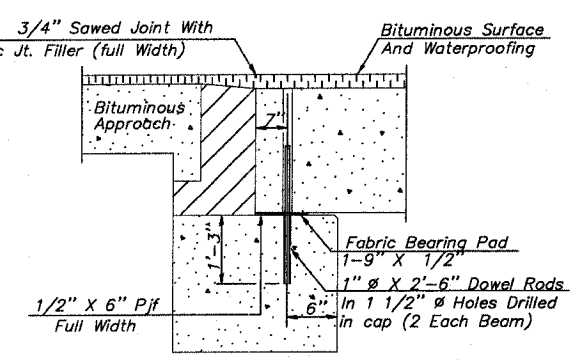
Contract 85381

ROUTE NO.	SECTION	COUNTY	TOTAL SHEETS	SHEET NO.	SHEET NO. 504
M.S. 1090	*	BUREAU COUNTY	27	22	OF SHEETS 9
* SECTION 01-00008-00-BR		ILLINOIS	FED. AID PROJECT		

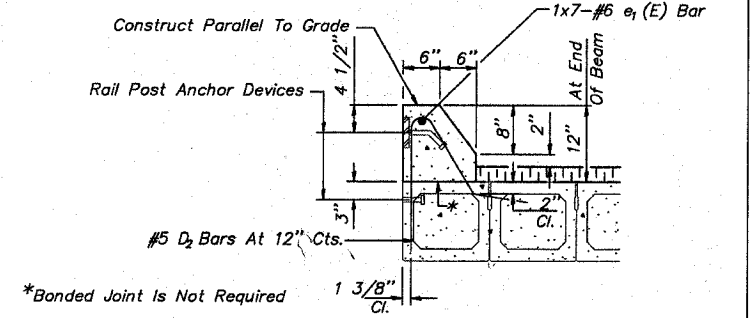


SECTION THRU FIXED PIER

* 1" jt. Shall be filled with non-shrink grout.
 1" dimension may vary to accommodate tolerance in beam lengths.

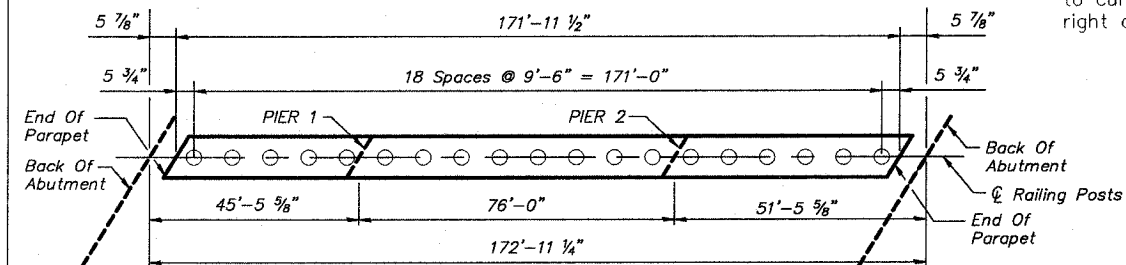


SECTION THRU ABUTMENT

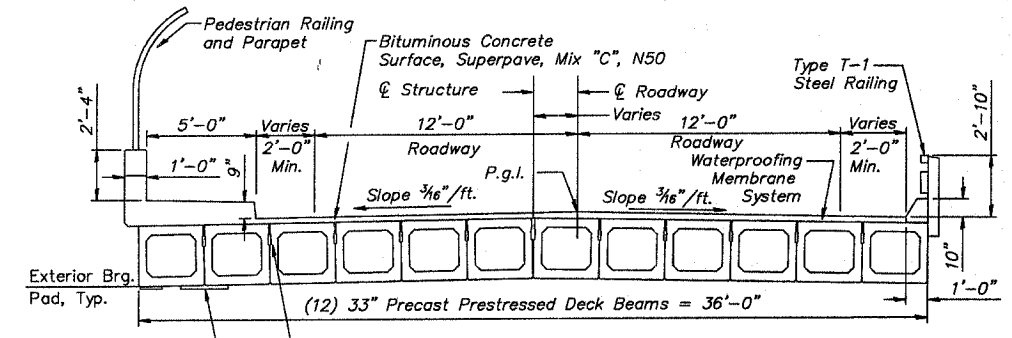


SECTION THRU CURB
 Curbs Shall Be Poured In The Field.

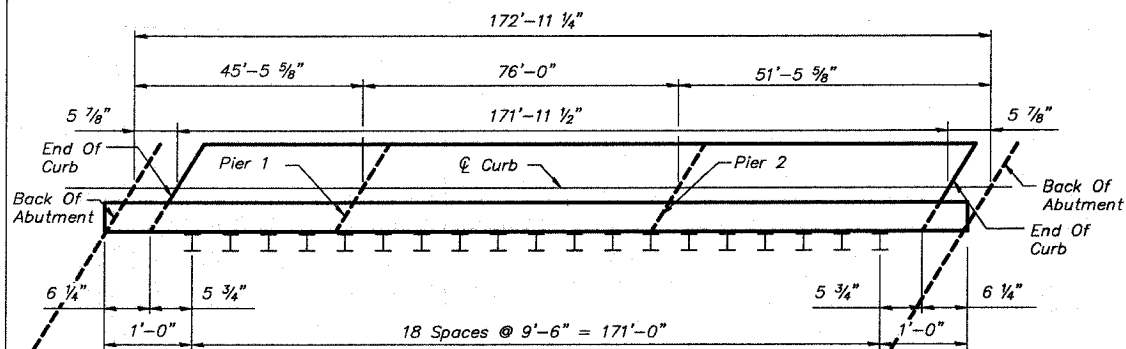
Note: After beams have been erected, holes shall be drilled into substructure and anchor dowels placed. Dowel holes shall be filled with non-shrink grout to top of beam and allowed to cure min. 24 hrs. prior to grouting the shear keys. All horizontal dimensions are at right angles to beam ends. Hatched area to be poured after beams are in place.



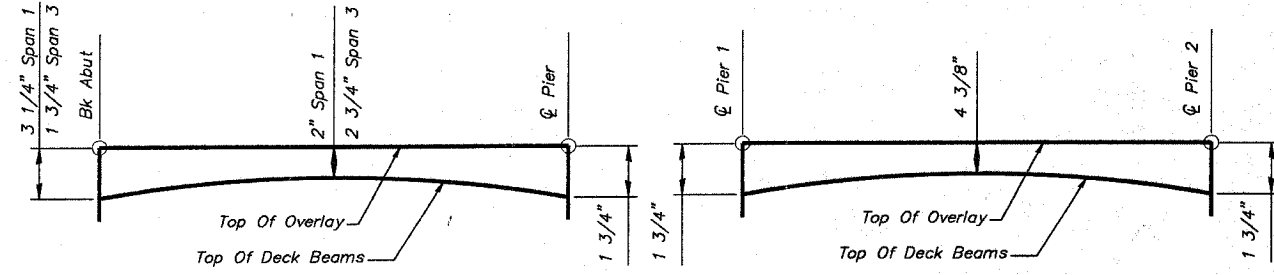
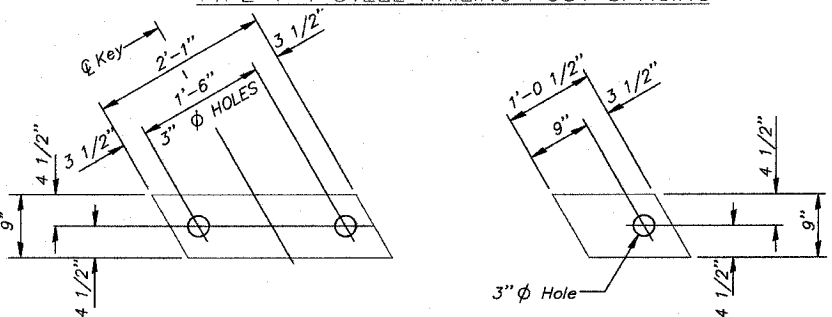
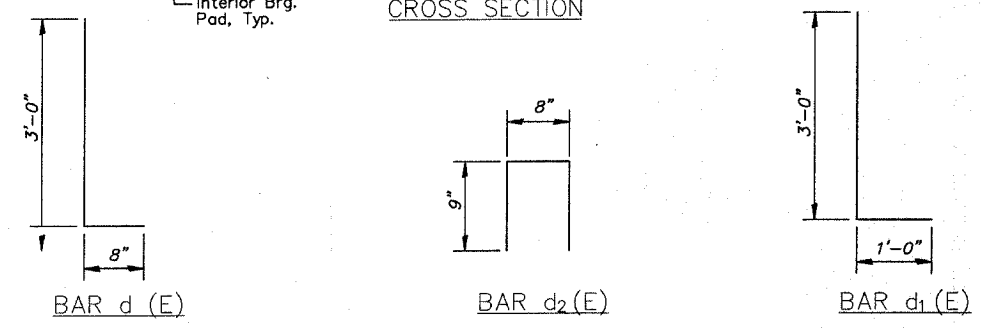
PEDESTRIAN RAILING POST SPACING
 Provide full height joint in parapet at piers
 Insert 1/8" aluminum sheet.



CROSS SECTION



TYPE T-1 STEEL RAILING POST SPACING



OVERLAY THICKNESS DETAILS

* THICKNESS OF BIT. OVERLAY AND WATERPROOFING MEMBRANE SYSTEM

BILL OF MATERIAL

BAR NO.	SIZE	LENGTH	SHAPE
b (E) 56	#5	26'-5"	—
c (E) 173	#5	5'-6"	—
d (E) 173	#4	3'-8"	L
d ₁ (E) 173	#6	4'-0"	L
d ₂ (E) 38	#4	2'-2"	Π
e (E) 42	#4	26'-0"	—
e ₁ (E) 7	#6	26'-9"	—
P.P. Concrete Deck Beams 33" Depth		Sq. Ft.	6,100
Concrete Structures		Cu. Yd.	55.6
Reinforcement Bars, Epoxy Coated		Pound	5,064

DESIGNED BY: JTT
 CHECKED BY:
 DRAWN BY: CJP
 CHECKED BY: JTT

McCLURE ENGINEERING ASSOCIATES, INC.
 1138 COLUMBUS STREET OTTAWA, ILLINOIS 61350
 PHONE (815) 433-2080 FAX (815) 433-5930
 DESIGN FIRM LICENSE: ILLINOIS #184-000816
 COPYRIGHT 2006 BY McCLURE ENGINEERING ASSOCIATES, INC.

REVISIONS	
NAME	DATE

SUPERSTRUCTURE DETAILS
 HIGH STREET OVER
 BNSF RAILWAY
 BUREAU COUNTY
 SECTION 01-00008-00-BR
 STATION 5+36.11
 STRUCTURE NO. 006-6600