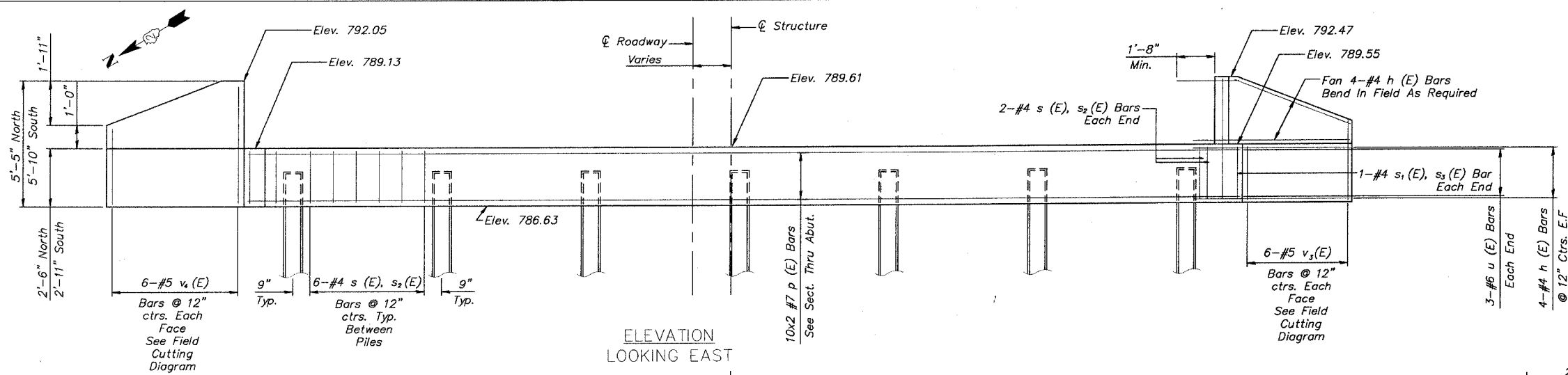
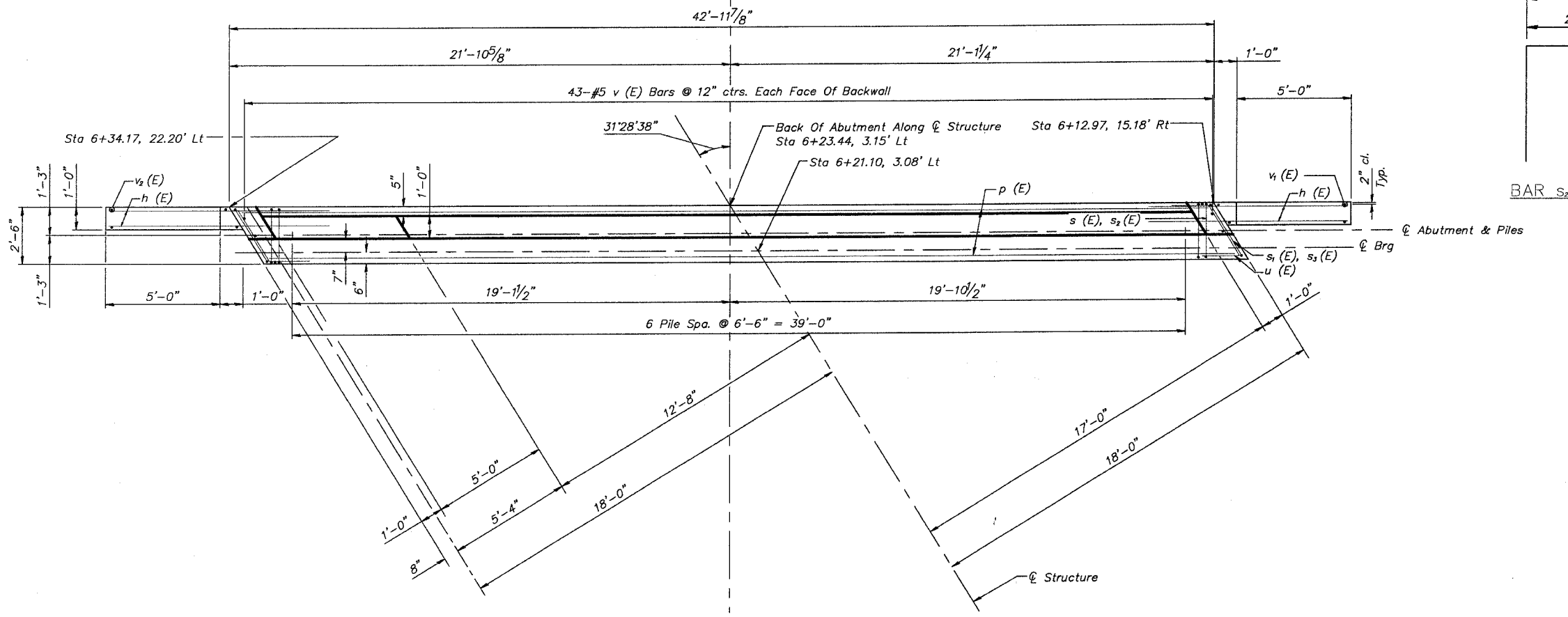


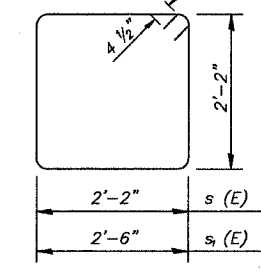
ROUTE NO.	SECTION	COUNTY	TOTAL SHEETS	SHEET NO.	SHEET NO. 506
M.S. 1090	*	BUREAU COUNTY	27	24	OF SHEETS 9
* SECTION 01-00008-00-BR		ILLINOIS	FED. AID PROJECT		



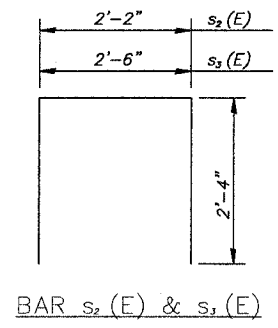
ELEVATION
LOOKING EAST



PLAN



BAR s(E) & s1(E)

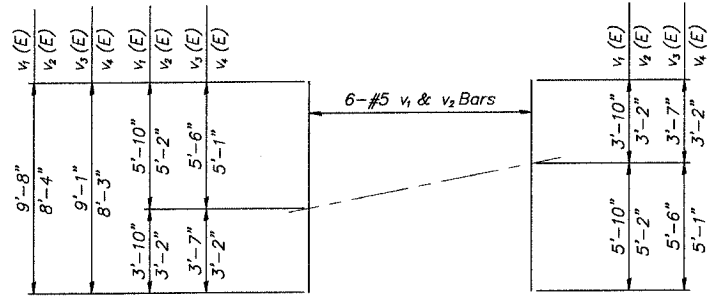


BAR s2(E) & s3(E)

BAR u(E)

TOTAL BILL OF MATERIAL 2 ABUTMENTS

BAR	NO.	SIZE	LENGTH	SHAPE
h (E)	64	#4	8'-0"	—
h1 (E)	24	#5	22'-5"	—
p (E)	40	#7	23'-0"	—
s (E)	80	#4	9'-5"	□
s1 (E)	4	#4	10'-1"	□
s2 (E)	80	#4	6'-10"	□
s3 (E)	4	#4	7'-2"	□
u1 (E)	12	#6	7'-8"	▽
v (E)	172	#5	4'-9"	—
v1 (E)	6	#5	9'-8"	—
v2 (E)	6	#5	8'-4"	—
v3 (E)	6	#5	9'-1"	—
v4 (E)	6	#5	8'-3"	—
Concrete Structures			Cu. Yd.	36.6
Reinforcement Bars, Epoxy Coated			Pound	4,910



FIELD CUTTING DIAGRAM

Order full length. Cut as shown and use remainder of bars in opposite face.

DESIGNED BY:	JTT
CHECKED BY:	
DRAWN BY:	CJP
CHECKED BY:	JTT

McCLURE ENGINEERING ASSOCIATES, INC.
 1138 COLUMBUS STREET OTTAWA, ILLINOIS 61350
 PHONE (815) 433-2080 FAX (815) 433-5830
 DESIGN FIRM LICENSE: ILLINOIS #184-000816
 COPYRIGHT 2006 BY McCLURE ENGINEERING ASSOCIATES, INC.

REVISIONS		SUBSTRUCTURE-EAST ABUTMENT & BILL OF MATERIALS HIGH STREET OVER BNSF RAILWAY BUREAU COUNTY SECTION 01-00008-00-BR STATION 5+36.11 STRUCTURE NO. 006-6600
NAME	DATE	