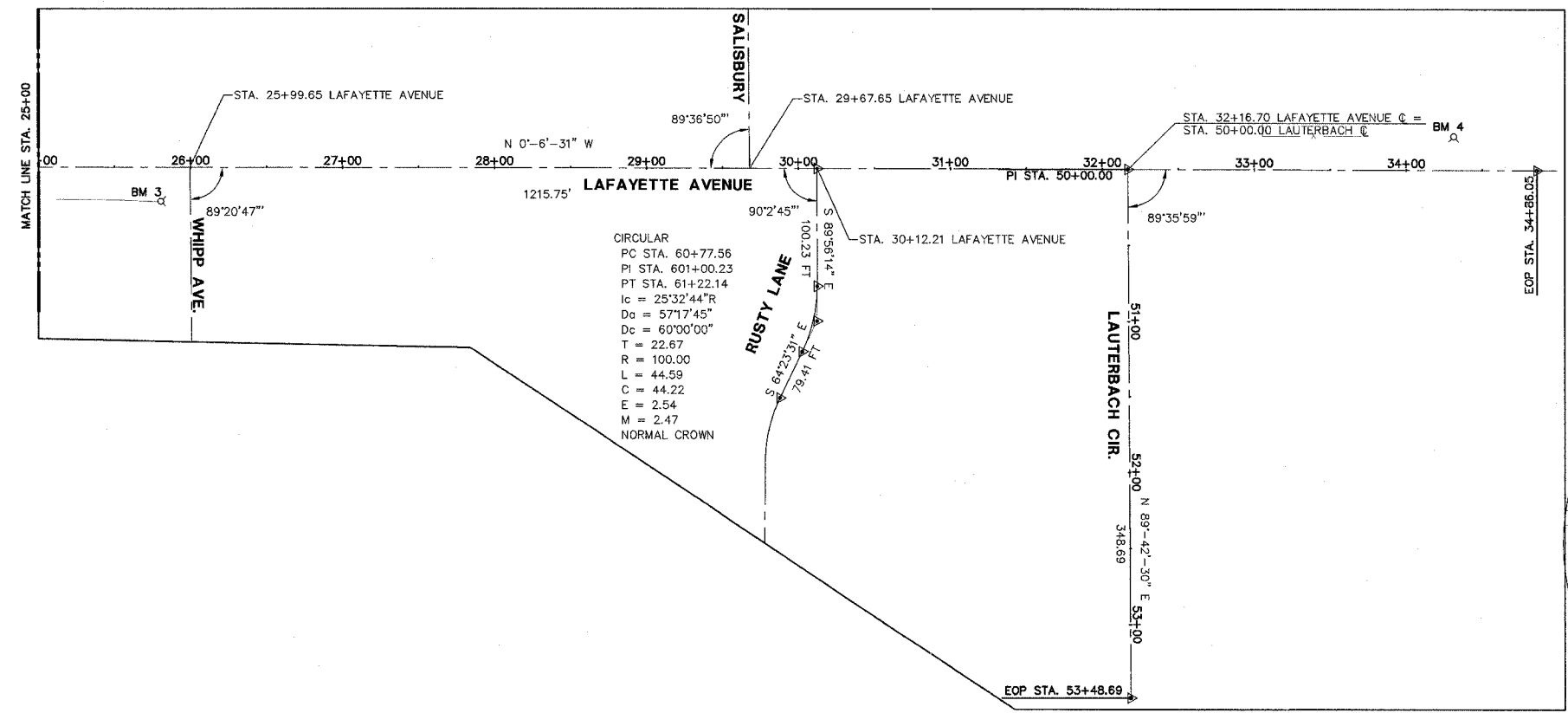
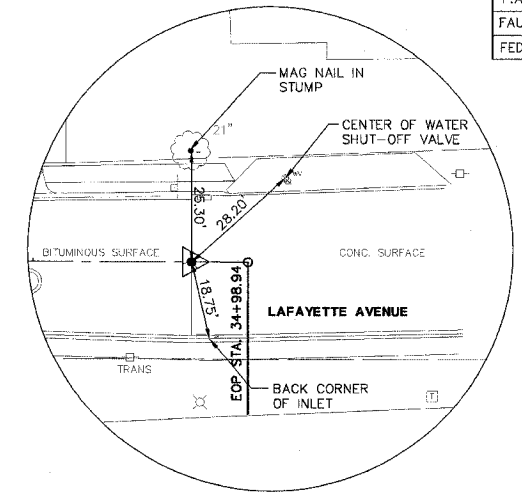


F.A. RTE.	SECTION	COUNTY	CONTRACT NO.
FAU 6579	02-00065-00-PV	PEORIA	89358
FED. RD. DIST. NO.	ILLINOIS	PROJECT NO. M 503 102	

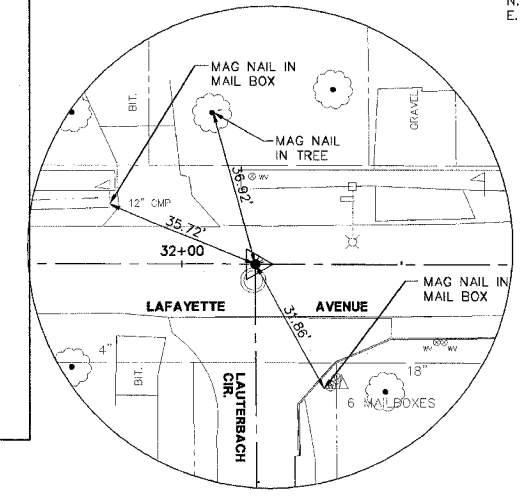
SCALES:  
1" = 50' HOR



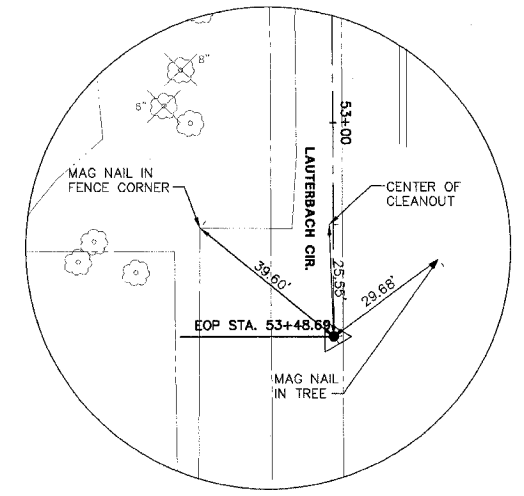
CIRCULAR  
PC STA. 60+77.56  
PI STA. 60+00.23  
PT STA. 61+22.14  
Ic = 25°32'44\"/>



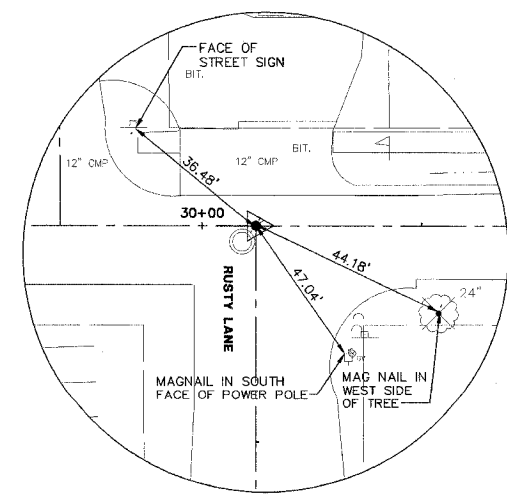
P.I. STA. 34+86.05  
(LAFAYETTE)  
MAG NAIL  
N. 4890.89  
E. 4961.00



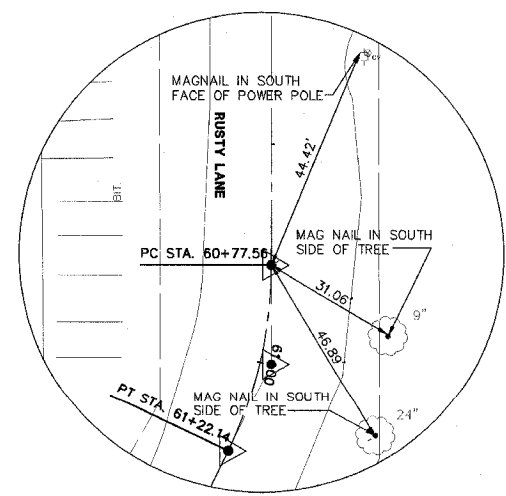
P.I. STA. 50+00.00  
(LAUTERBACH)  
MAG NAIL  
N. 4621.54  
E. 4960.48



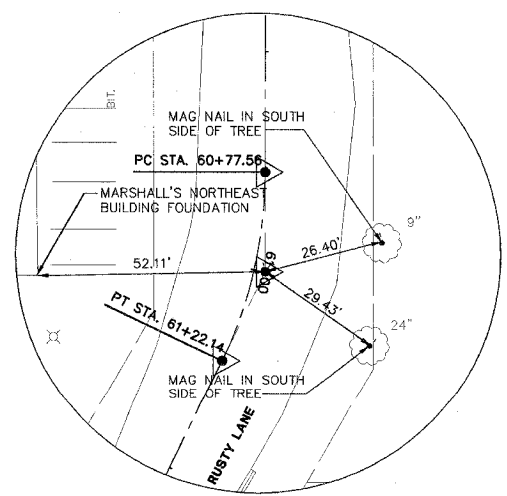
P.I. STA. 53+48.69  
(LAUTERBACH)  
MAG NAIL  
N. 4623.31  
E. 5309.17



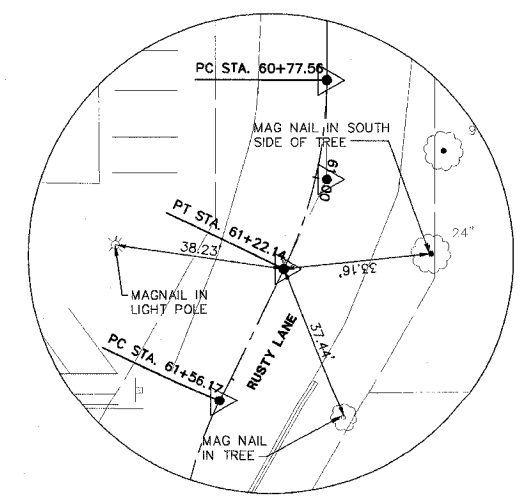
P.I. 60+00.00  
(RUSTY)  
MAG NAIL  
N. 4417.05  
E. 4960.10



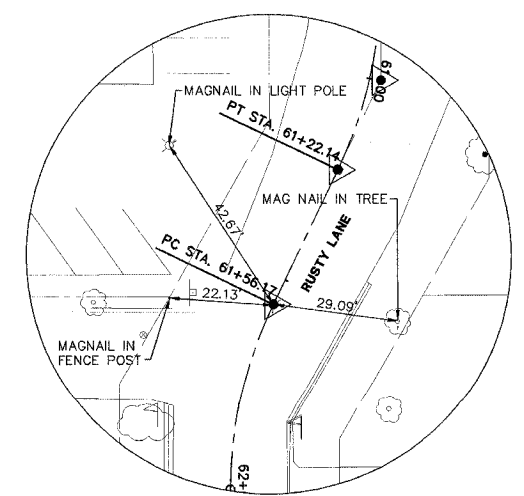
PC STA. 60+77.56  
(RUSTY)  
MAG NAIL  
N. 4416.96  
E. 5037.65



PT STA. 61+22.14  
(RUSTY)  
MAG NAIL  
N. 4416.94  
E. 5060.32



PT STA. 61+22.14  
(RUSTY)  
MAG NAIL  
N. 4407.14  
E. 5080.77



P.C. STA. 61+56.17  
(RUSTY)  
MAG NAIL  
N. 4392.43  
E. 5111.45

**STS CONSULTANTS**  
111 NE Jefferson Ave.  
Peoria, Illinois 61602  
Ph: (309) 676-8484  
Fax: (309) 676-5445  
I. Design Firm Reg. No. 184-001518

**LAFAYETTE AVE.  
BARTONVILLE IL.**

**ALIGNMENT, TIES  
AND BENCHMARKS  
LAFAYETTE AVE.**

SURVEY	CHECKED	ISSUE DATE
DESIGN	APPROVED	PRELIM. DATE
DRAWN	CSA	PROJECT NO.

SHEET  
**12**  
OF  
**83**

L:\BARTONVILLE\ALIGN-IES-BM-LAFAYETTE.DWG 11.9