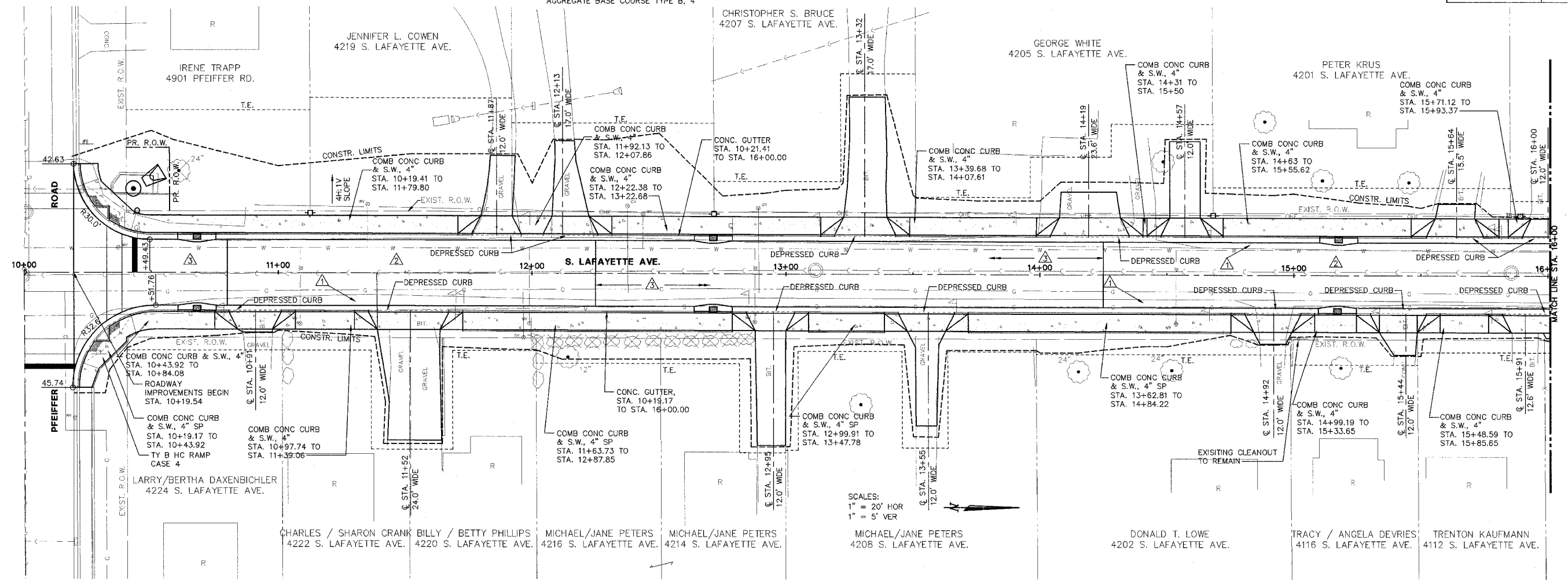
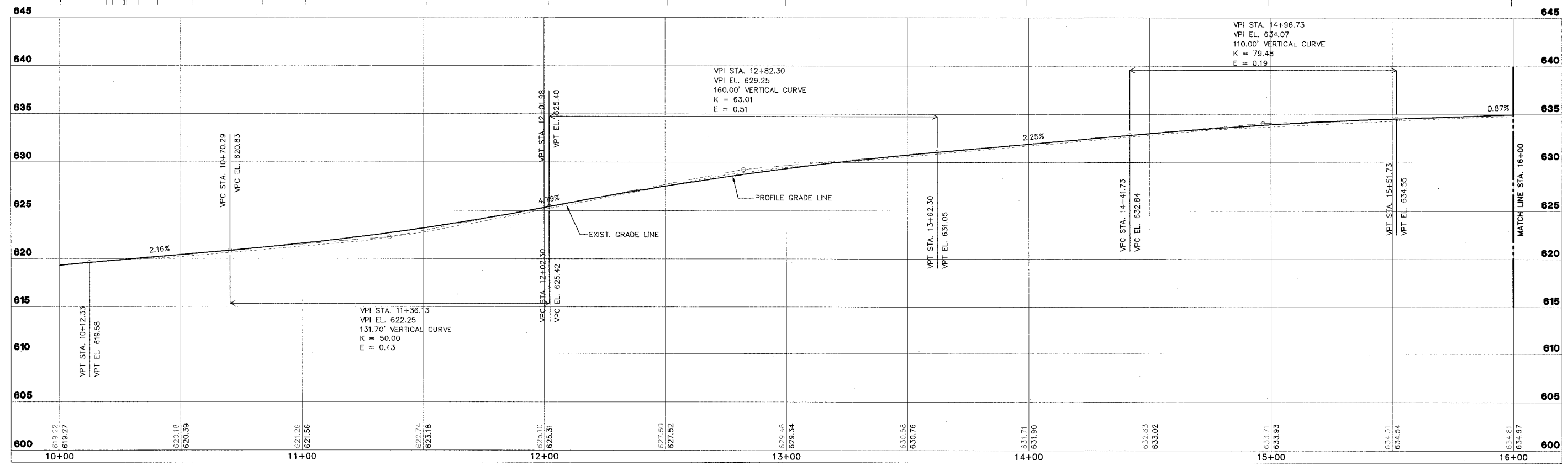


F.A. RTE.	SECTION	COUNTY	CONTRACT NO.
FAU 6579	02-00065-00-PV	PEORIA	89358
FED. RD. DIST. NO.	ILLINOIS	PROJECT NO. M 503 102	

▲ BITUMINOUS CONCRETE SURFACE COURSE MIX D, N 50, 2"
 LEVELING BINDER, 1"
 BASE COURSE WIDENING, 6"
 AGGREGATE BASE COURSE TYPE B, 4"
 ▲ BITUMINOUS CONCRETE SURFACE COURSE MIX D, N 50, 2"
 LEVELING BINDER, 1"
 ▲ BITUMINOUS CONCRETE SURFACE COURSE MIX D, N 50, 2"
 BITUMINOUS CONCRETE BINDER COURSE MIX D, N 50, 3"
 AGGREGATE BASE COURSE TYPE A, 8"



SCALES:
 1" = 20' HOR
 1" = 5' VER



STS CONSULTANTS
 111 NE Jefferson Ave.
 Peoria, Illinois 61602
 Ph: (309) 678-8484
 Fax: (309) 678-5446
 IL Design Firm Reg. No. 184-001518

LAFAYETTE AVE.
BARTONVILLE IL.

PLAN AND PROFILE
STA. 10+00 TO STA. 16+00

SURVEY	CHECKED	ISSUE DATE
DESIGN	APPROVED	PRELIM. DATE
DRAWN		PROJECT NO.

SHEET 24 OF 83
 01/06/06
 11/21/05
 BART0001