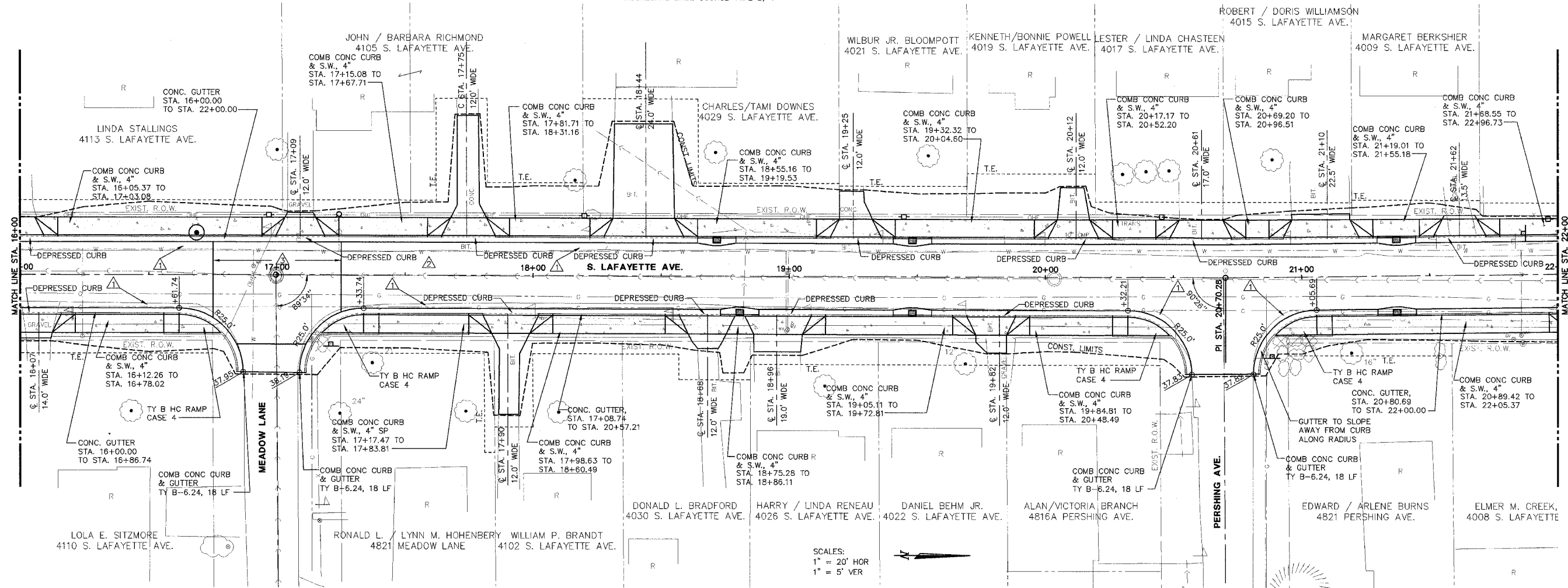


BITUMINOUS CONCRETE SURFACE COURSE MIX D, N 50, 2" LEVELING BINDER, 1" BASE COURSE WIDENING, 6" AGGREGATE BASE COURSE TYPE B, 4"

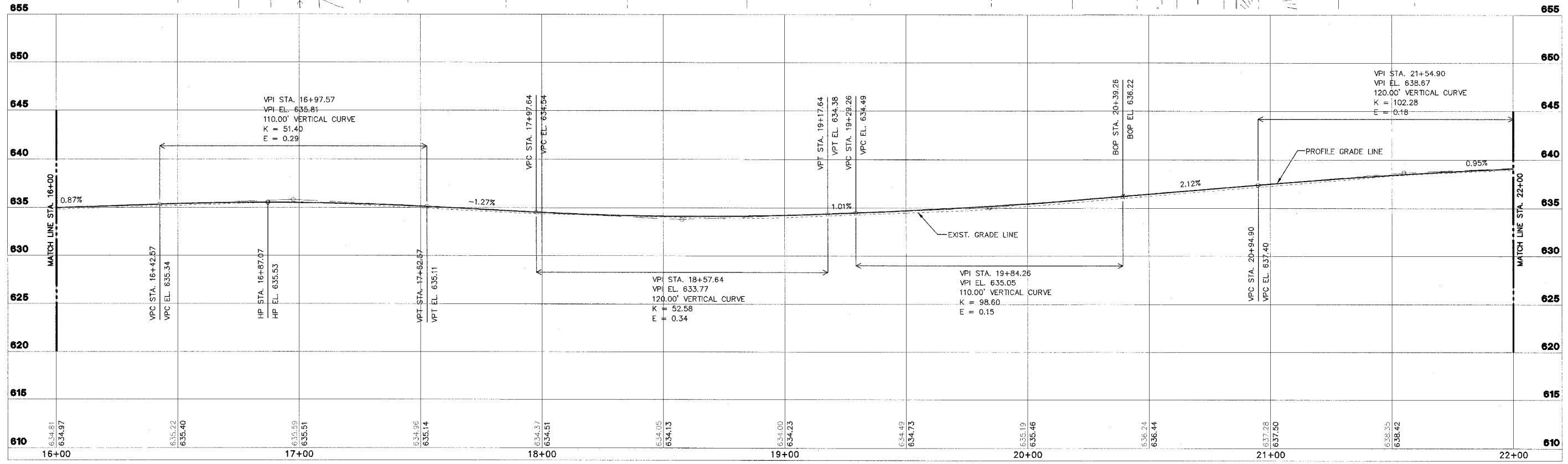
BITUMINOUS CONCRETE SURFACE COURSE MIX D, N 50, 2" LEVELING BINDER, 1"

BITUMINOUS CONCRETE SURFACE COURSE MIX D, N 50, 2" BITUMINOUS CONCRETE BINDER COURSE MIX D, N 50, 3" AGGREGATE BASE COURSE TYPE A, 8"

F.A. RTE.	SECTION	COUNTY	CONTRACT NO.
FAU 6579	02-00065-00-PV	PEORIA	89358
FED. RD. DIST. NO.	ILLINOIS	PROJECT NO.	M 503 102



SCALES:
 1" = 20' HOR
 1" = 5' VER



SHEET
25
 OF
83

STS CONSULTANTS
 111 NE Jefferson Ave.
 Peoria, Illinois 61602
 Ph: (309) 676-8464
 Fax: (309) 678-5445
 IL Design Firm Reg. No. 184-001518

LAFAYETTE AVE.
BARTONVILLE IL.

PLAN AND PROFILE
STA. 16+00 TO STA. 22+00

SURVEY	CHECKED	ISSUE DATE
DESIGN	APPROVED	PRELIM. DATE
DRAWN	CSA	PROJECT NO.