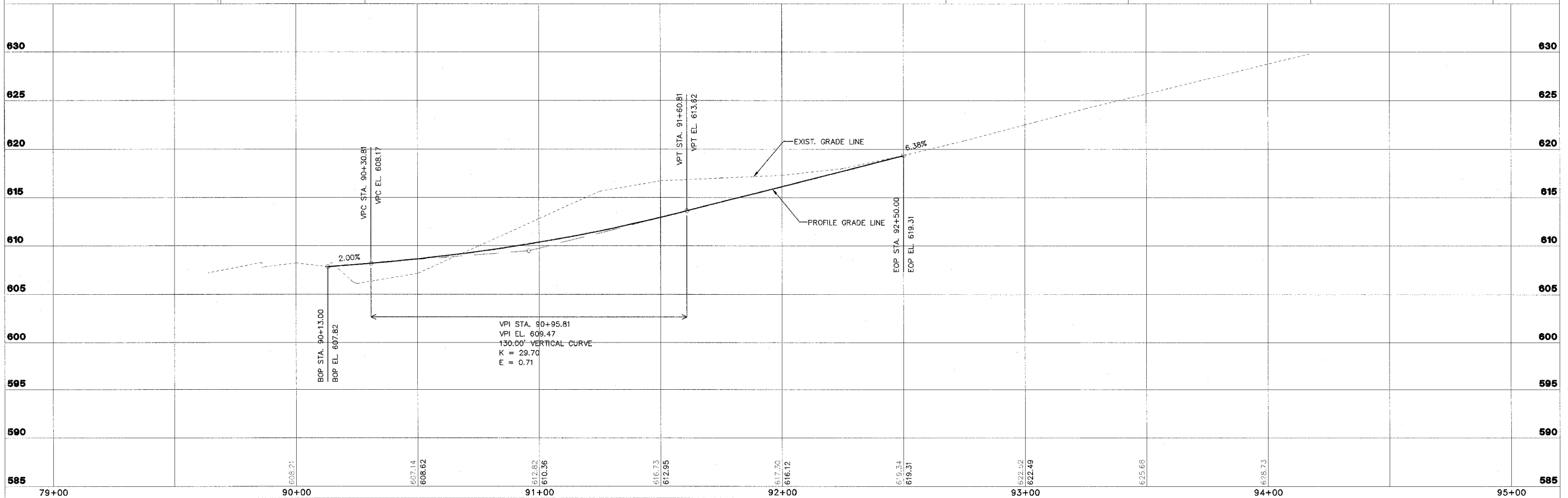
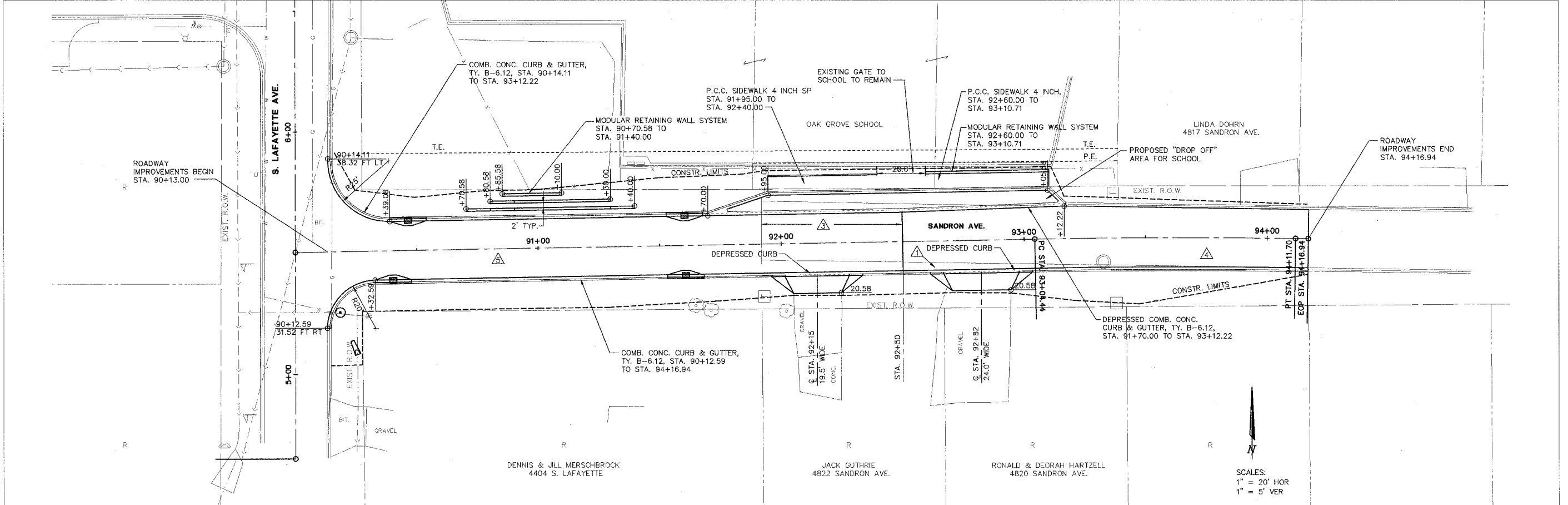


△ BITUMINOUS CONCRETE SURFACE COURSE MIX D, N 50, 2" LEVELING BINDER, 1" BASE COURSE WIDENING, 6" AGGREGATE BASE COURSE TYPE B, 4"
 △ BITUMINOUS CONCRETE SURFACE COURSE MIX D, N 50, 2" BITUMINOUS CONCRETE BINDER COURSE MIX D, N 50, 3" AGGREGATE BASE COURSE TYPE B, 8"
 △ BITUMINOUS CONCRETE SURFACE COURSE MIX D, N 50, 1.5" BITUMINOUS CONCRETE BINDER COURSE MIX D, N 50, 3" AGGREGATE BASE COURSE TYPE B, 8" LIME MODIFIED SOIL, 12"

F.A. RTE.	SECTION	COUNTY	CONTRACT NO.
FAU 6579	02-00065-00-PV	PEORIA	89358
FED. RD. DIST. NO.	ILLINOIS	PROJECT NO. M 503 102	



STS CONSULTANTS 111 N. Jefferson Ave. Peoria, Illinois 61602 PH: (309) 675-8464 FAX: (309) 675-2445 IL Design Firm Reg. No. 184-001518	LAFAYETTE AVE. BARTONVILLE IL.	SANDRON AVENUE PLAN AND PROFILE STA. 90+13 TO STA. 95+00	SURVEY DESIGN DRAWN CSA	CHECKED APPROVED	ISSUE DATE 01/06/06 PRELIM. DATE 11/21/05 PROJECT NO. BART001
	SHEET 29 OF 83				