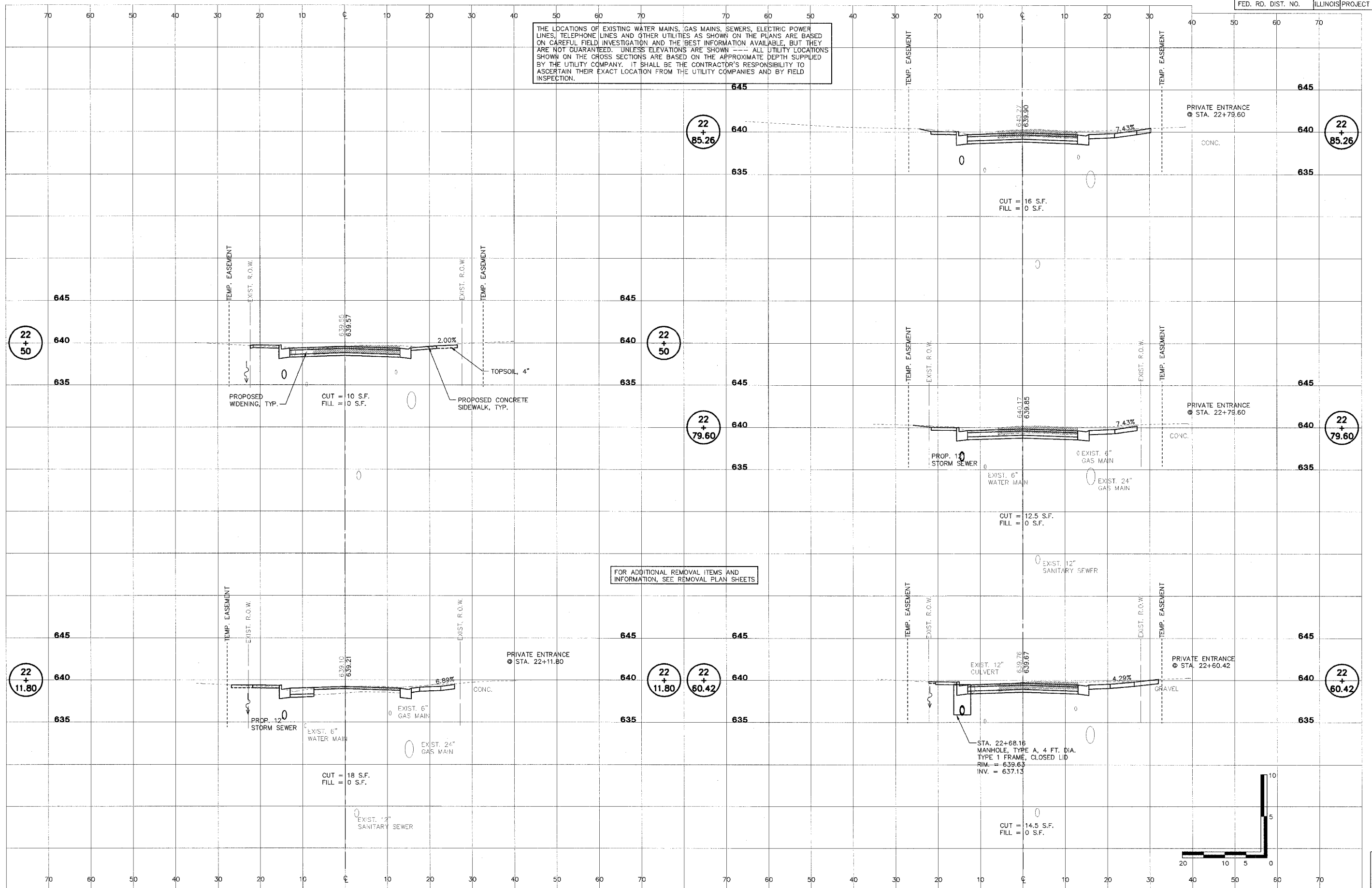
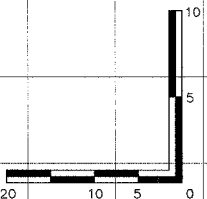


THE LOCATIONS OF EXISTING WATER MAINS, GAS MAINS, SEWERS, ELECTRIC POWER LINES, TELEPHONE LINES AND OTHER UTILITIES AS SHOWN ON THE PLANS ARE BASED ON CAREFUL FIELD INVESTIGATION AND THE BEST INFORMATION AVAILABLE, BUT THEY ARE NOT GUARANTEED. UNLESS ELEVATIONS ARE SHOWN --- ALL UTILITY LOCATIONS SHOWN ON THE CROSS SECTIONS ARE BASED ON THE APPROXIMATE DEPTH SUPPLIED BY THE UTILITY COMPANY. IT SHALL BE THE CONTRACTOR'S RESPONSIBILITY TO ASCERTAIN THEIR EXACT LOCATION FROM THE UTILITY COMPANIES AND BY FIELD INSPECTION.



FOR ADDITIONAL REMOVAL ITEMS AND INFORMATION, SEE REMOVAL PLAN SHEETS



STS CONSULTANTS
 111 NE Jefferson Ave.
 Peoria, Illinois 61602
 PH: 309/678-8464
 FAX: 309/678-5445
 IL Design Firm Reg. No. 184-001518

**LAFAYETTE AVE.
 BARTONVILLE IL.**

**CROSS SECTIONS
 STA. 22+11.80 TO STA. 22+79.80**

SURVEY	CHECKED	ISSUE DATE
DESIGN	APPROVED	PRELIM. DATE
DRAWN	DEH	PROJECT NO.

SHEET **58** OF **83**

ISSUE DATE 01/06/06
 PRELIM. DATE 11/21/05
 PROJECT NO. BART0001

L:\BART0001\DWG\X14.DWG, P. 11