

ROUTE NO.	SECTION NO.	TOTAL SHEET NO.
F.A.U. 6578 F.A.U. 6679	03-00019-1 I-FP	98 21
FED. ROAD DIST. NO.	COUNTY	PROJECT
	PEORIA	M-5093 (104)
	ILLINOIS	

CONTRACT NO. 89369

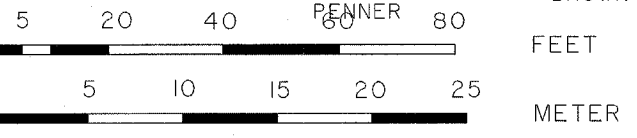
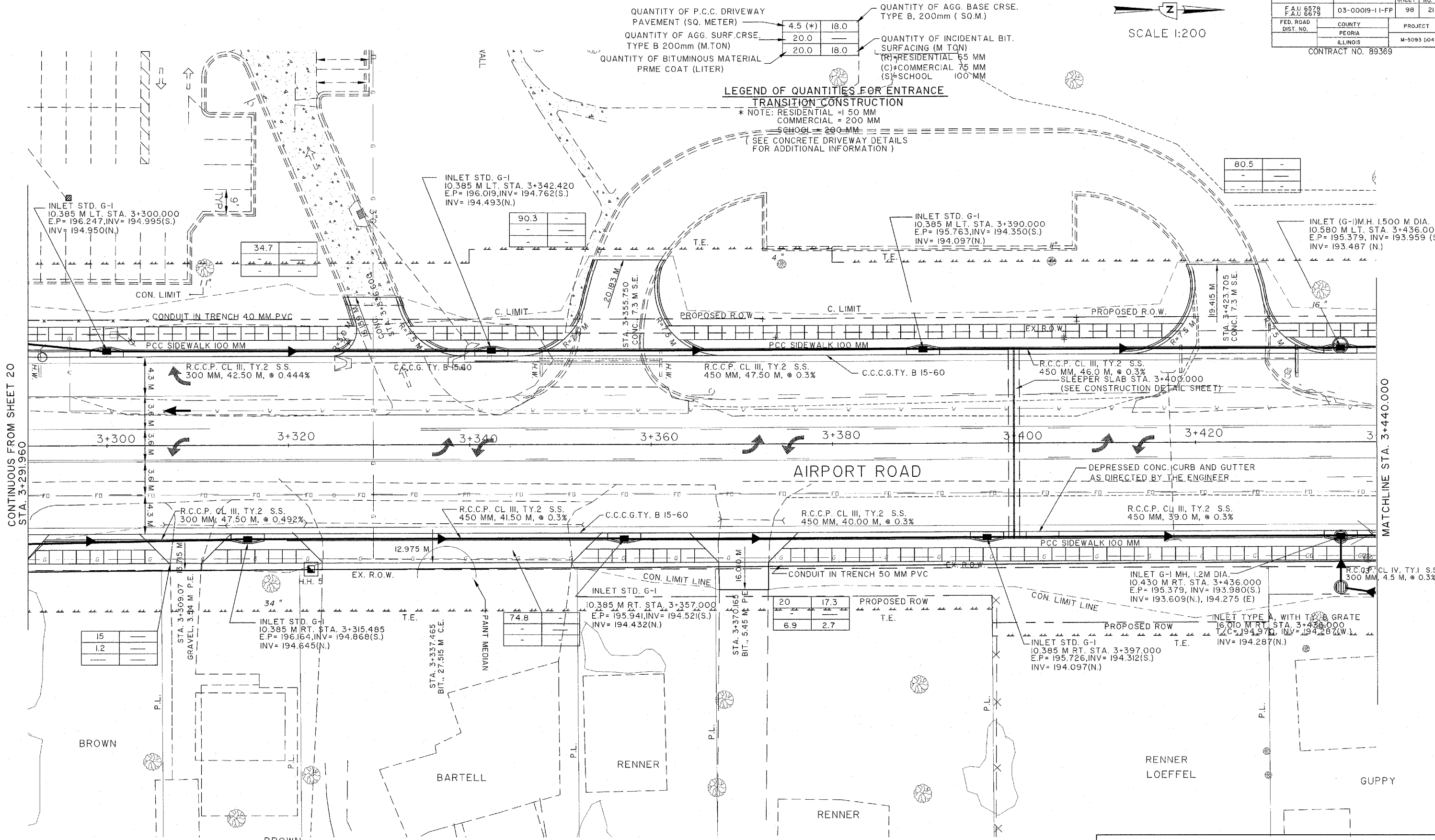
SCALE 1:200

QUANTITY OF P.C.C. DRIVEWAY PAVEMENT (SQ. METER)	4.5 (*)	18.0
QUANTITY OF AGG. SURF. CRSE. TYPE B 200mm (M.TON)	20.0	
QUANTITY OF BITUMINOUS MATERIAL PRME COAT (LITER)	20.0	18.0
QUANTITY OF AGG. BASE CRSE. TYPE B, 200mm (SQ.M.)		
QUANTITY OF INCIDENTAL BIT. SURFACING (M TON)		
(R)=RESIDENTIAL 65 MM		
(C)=COMMERCIAL 75 MM		
(S)=SCHOOL 100 MM		

LEGEND OF QUANTITIES FOR ENTRANCE
TRANSITION CONSTRUCTION
 * NOTE: RESIDENTIAL = 1.50 MM
 COMMERCIAL = 200 MM
 SCHOOL = 200 MM
 (SEE CONCRETE DRIVEWAY DETAILS FOR ADDITIONAL INFORMATION)

CONTINUOUS FROM SHEET 20
 STA. 3+291.960

MATCHLINE STA. 3+440.000



PEORIA COUNTY HIGHWAY DEPARTMENT
 CONSTRUCTION DETAILS
 STA. 3+291.960 TO STA. 3+440.000
 AIRPORT ROAD SEC. 03-00019-1 I-FP