

R.C.C.P. CL III, TY.2 S.S.
450 MM, 34.0 M, @ 0.3 %

QUANTITY OF P.C.C. DRIVEWAY PAVEMENT (SQ. METER)	4.5 (*)	18.0
QUANTITY OF AGG. SURF. CRSE. TYPE B 200mm (M.TON)	20.0	—
QUANTITY OF BITUMINOUS MATERIAL PRME (COAT (LITER)	20.0	18.0

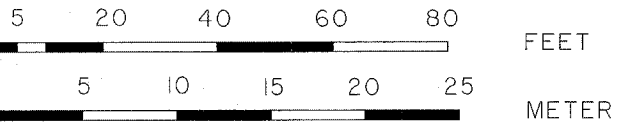
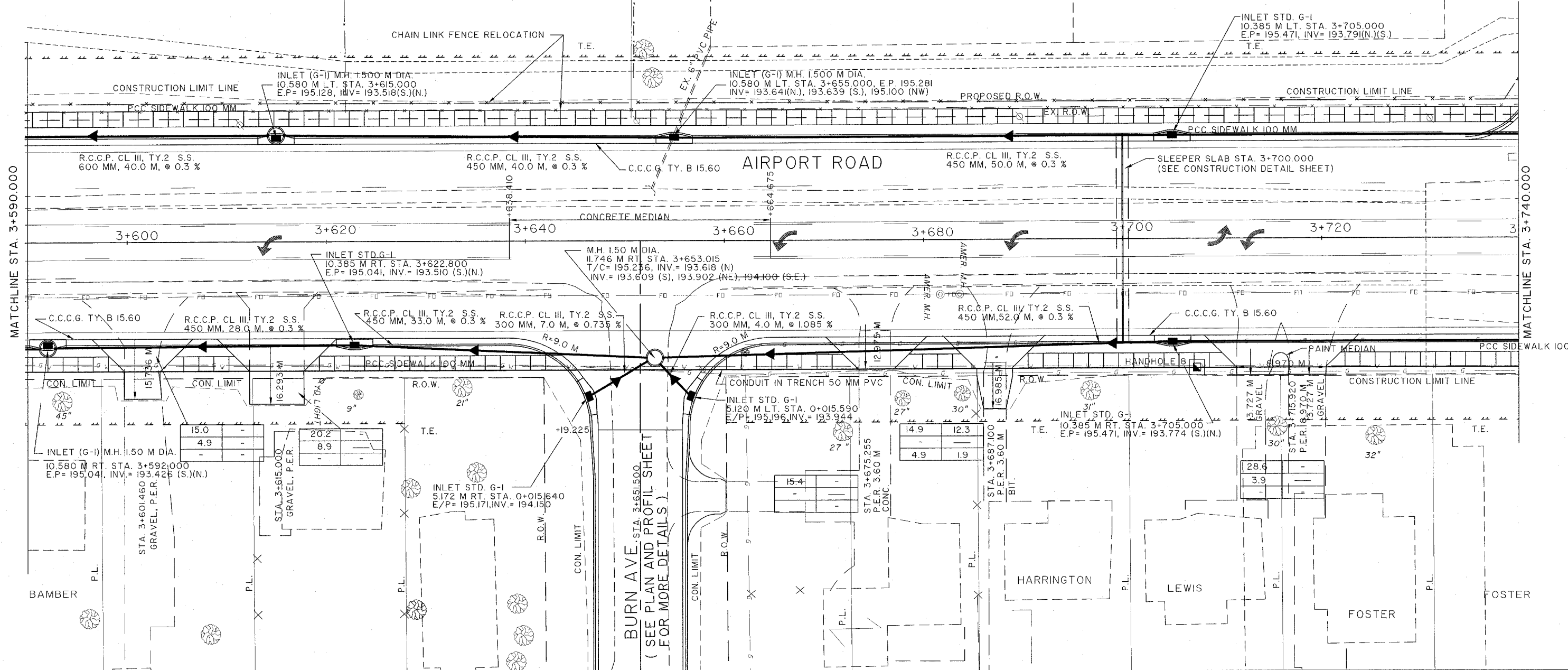
QUANTITY OF AGG. BASE CRSE. TYPE B, 200mm (SQ.M.)	—	—
QUANTITY OF INCIDENTAL BIT. SURFACING (M. TON)	(R)=RESIDENTIAL 65 MM	(C)=COMMERCIAL 75 MM
	(S)=SCHOOL 100 MM	

SCALE 1:200

ROUTE NO.	SECTION NO.	TOTAL SHEET NO.
F.A.U 6578 F.A.U 6679	03-00019-1 I-FP	98 23
FED. ROAD DIST. NO.	COUNTY	PROJECT
	PEORIA	M-5093 (04)
	ILLINOIS	

CONTRACT NO. 89369

LEGEND OF QUANTITIES FOR ENTRANCE TRANSITION CONSTRUCTION
 * NOTE: RESIDENTIAL = 1 50 MM
 COMMERCIAL = 200 MM
 SCHOOL = 200 MM
 (SEE CONCRETE DRIVEWAY DETAILS FOR ADDITIONAL INFORMATION)



PEORIA COUNTY HIGHWAY DEPARTMENT
 CONSTRUCTION DETAILS
 STA. 3+590.000 TO STA. 3+740.000
 AIRPORT ROAD SEC. 03-00019-1 I-FP