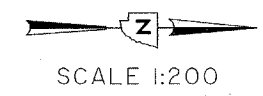


ROUTE NO.	SECTION NO.	TOTAL SHEET NO.
F.A.U. 6578 F.A.U. 6679	03-00019-11-FP	98 25
FED. ROAD DIST. NO.	COUNTY	PROJECT
	PEORIA	M-5093 (104)
ILLINOIS		

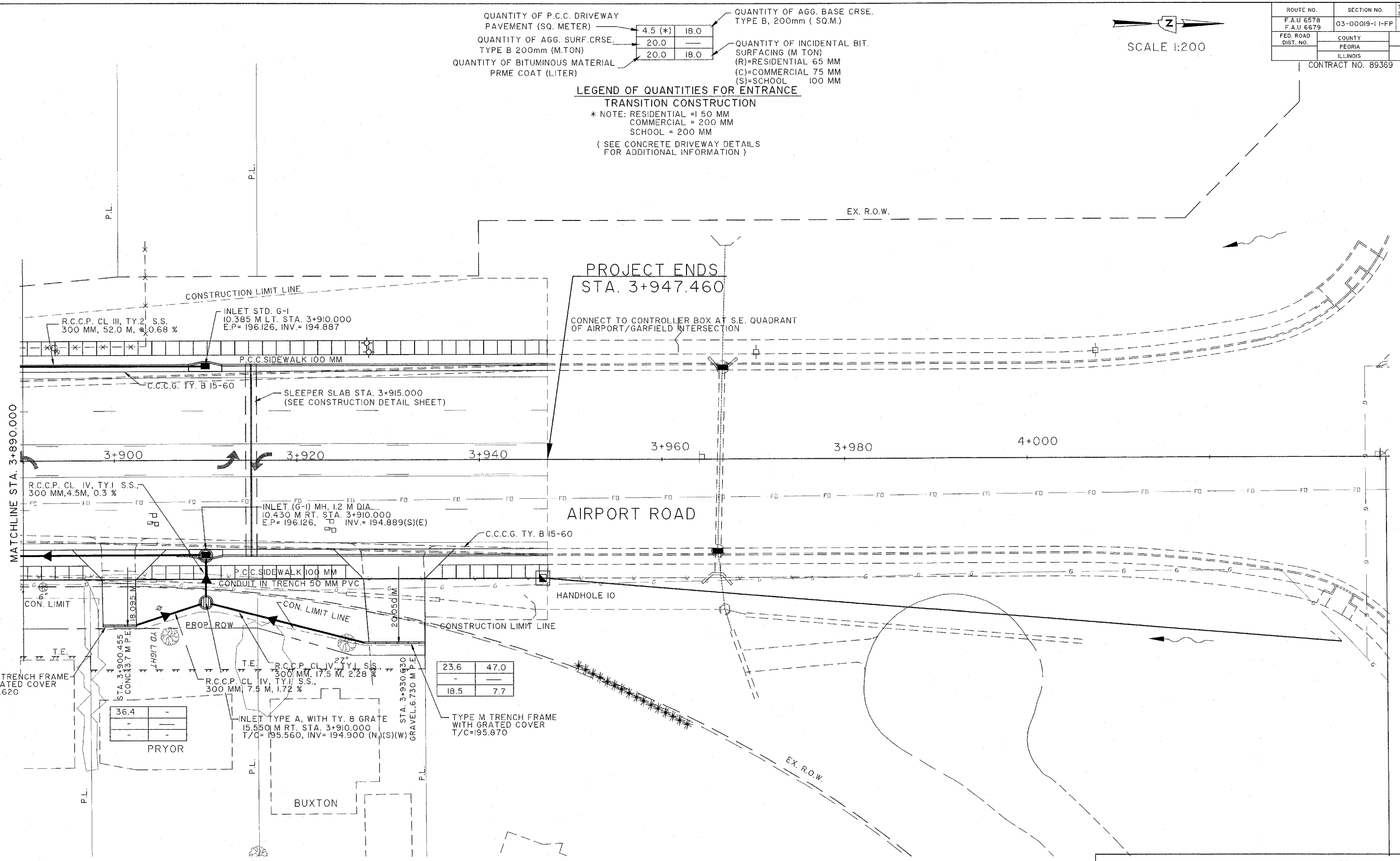


QUANTITY OF P.C.C. DRIVEWAY PAVEMENT (SQ. METER)	4.5 (*)	18.0
QUANTITY OF AGG. SURF. CRSE. TYPE B 200mm (M.TON)	20.0	18.0
QUANTITY OF BITUMINOUS MATERIAL PRME COAT (LITER)	20.0	18.0

QUANTITY OF AGG. BASE CRSE. TYPE B, 200mm (SQ.M.)

QUANTITY OF INCIDENTAL BIT. SURFACING (M TON)
 (R)=RESIDENTIAL 65 MM
 (C)=COMMERCIAL 75 MM
 (S)=SCHOOL 100 MM

LEGEND OF QUANTITIES FOR ENTRANCE
TRANSITION CONSTRUCTION
 * NOTE: RESIDENTIAL = 150 MM
 COMMERCIAL = 200 MM
 SCHOOL = 200 MM
 (SEE CONCRETE DRIVEWAY DETAILS FOR ADDITIONAL INFORMATION)



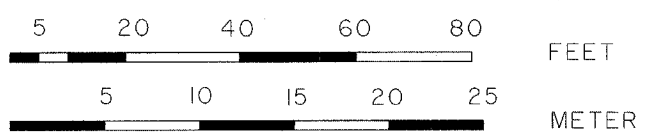
TYPE M TRENCH FRAME WITH GRATED COVER
 T/C=195.620

36.4	-
-	-
-	-

PRYOR

23.6	47.0
-	-
18.5	7.7

TYPE M TRENCH FRAME WITH GRATED COVER
 T/C=195.870



PEORIA COUNTY HIGHWAY DEPARTMENT
 CONSTRUCTION DETAILS
 STA. 3+890.000 TO STA. 3+947.460
 AIRPORT ROAD SEC. 01-00019-10-RP