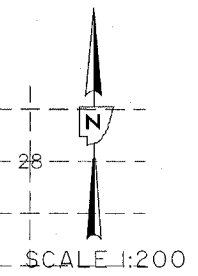


ROUTE NO.	SECTION NO.	TOTAL SHEET NO.	SHEET NO.
F.A.U 6578 F.A.U 6679	01-00019-10-RP	98	27
FED. ROAD DIST. NO.	COUNTY	PROJECT	
	PEORIA	ILLINOIS	
		M-5093 (104)	

CONTRACT NO. 89369



QUANTITY OF P.C.C. DRIVEWAY PAVEMENT (SQ. METER)

4.5 (*)	18.0
---------	------

QUANTITY OF AGG. SURF. CRSE. TYPE B 200mm (M.TON)

20.0	
------	--

QUANTITY OF BITUMINOUS MATERIAL PRME COAT (LITER)

20.0	18.0
------	------

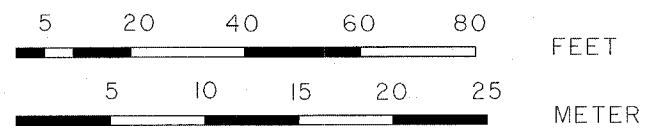
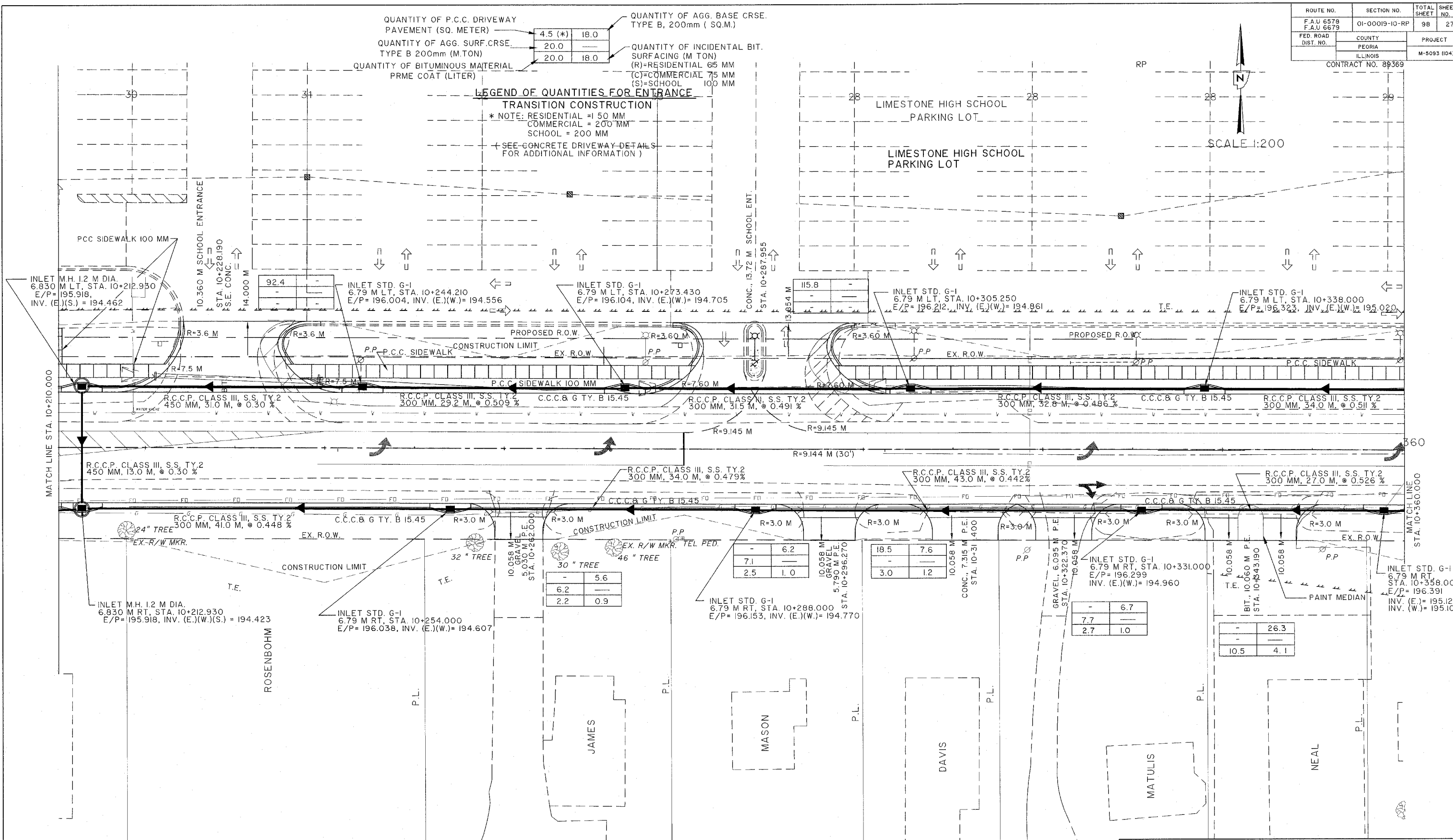
QUANTITY OF AGG. BASE CRSE. TYPE B, 200mm (SQ.M)

--	--

QUANTITY OF INCIDENTAL BIT. SURFACING (M.TON)

(R)=RESIDENTIAL 65 MM	
(C)=COMMERCIAL 75 MM	
(S)=SCHOOL 100 MM	

**LEGEND OF QUANTITIES FOR ENTRANCE TRANSITION CONSTRUCTION**  
 \* NOTE: RESIDENTIAL = 150 MM  
 COMMERCIAL = 200 MM  
 SCHOOL = 200 MM  
 (SEE CONCRETE DRIVEWAY DETAILS FOR ADDITIONAL INFORMATION)



PEORIA COUNTY HIGHWAY DEPARTMENT  
 CONSTRUCTION DETAILS  
 STA. 10+210.000 TO STA. 10+360.000  
 PFEIFFER ROAD SEC. 03-00019-1 I-FP