

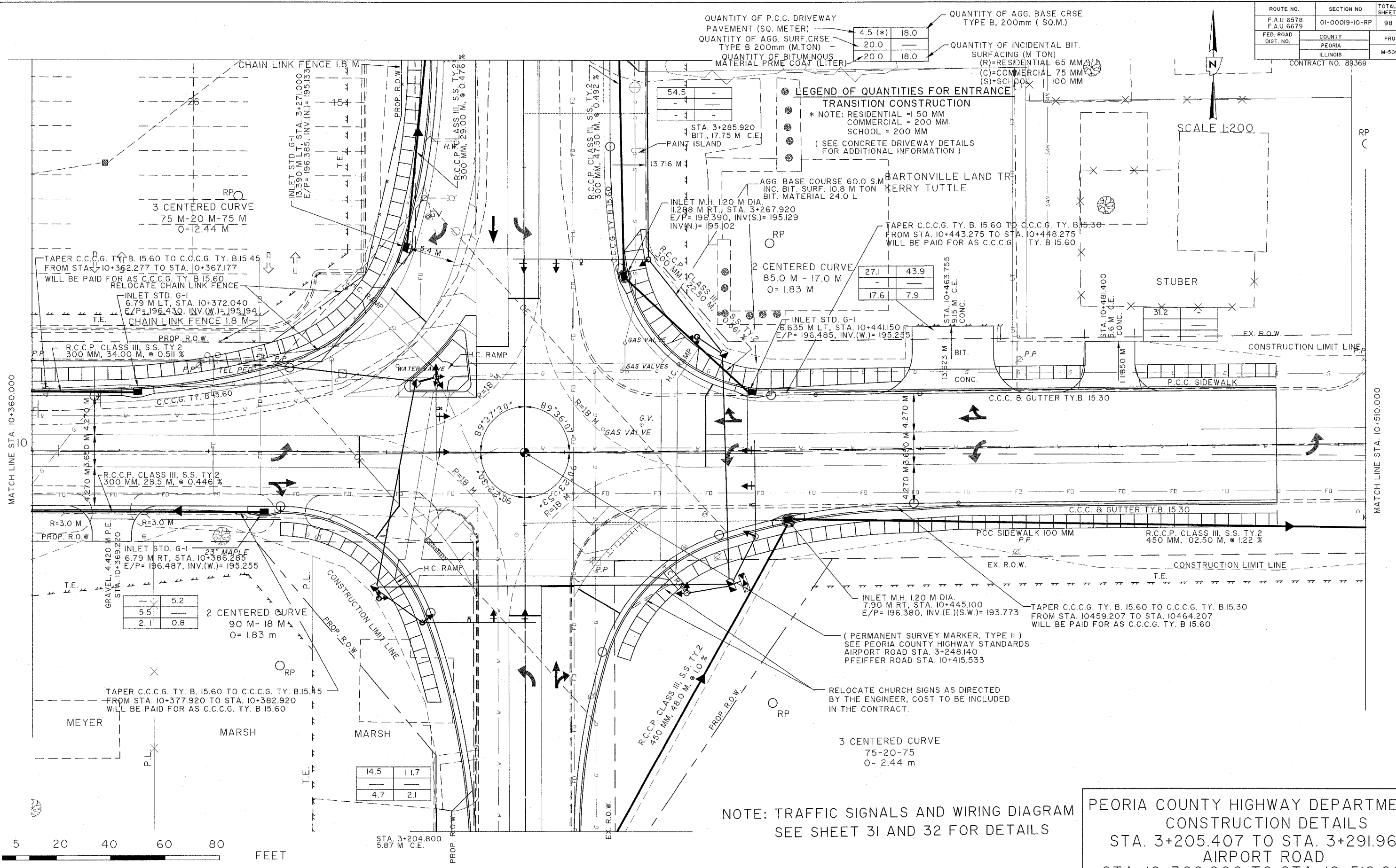
ROUTE NO.	SECTION NO.	TOTAL SHEET NO.
F.A.U 6578 F.A.U 6679	01-00019-10-RP	98 28
FED. ROAD DIST. NO.	COUNTY	PROJECT
	PEORIA	ILLINOIS
		M-5093 (04)

CONTRACT NO. 89369

QUANTITY OF P.C.C. DRIVEWAY PAVEMENT (SQ. METER)	4.5 (*)	18.0	QUANTITY OF AGG. BASE CRSE. TYPE B, 200mm (SQ.M.)	
QUANTITY OF AGG. SURF. CRSE. TYPE B 200mm (M.TON)	20.0		QUANTITY OF INCIDENTAL BIT. SURFACING (M TON)	
QUANTITY OF BITUMINOUS MATERIAL PRME COAT (LITER)	20.0	18.0	(R)=RESIDENTIAL 65 MM	
			(C)=COMMERCIAL 75 MM	
			(S)=SCHOOL 100 MM	

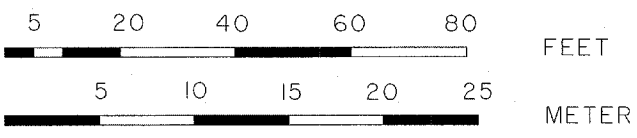
LEGEND OF QUANTITIES FOR ENTRANCE TRANSITION CONSTRUCTION
 * NOTE: RESIDENTIAL = 150 MM
 COMMERCIAL = 200 MM
 SCHOOL = 200 MM
 (SEE CONCRETE DRIVEWAY DETAILS FOR ADDITIONAL INFORMATION)

SCALE 1:200



5.2	
5.51	
2.1	0.8

14.5	11.7
4.7	2.1



NOTE: TRAFFIC SIGNALS AND WIRING DIAGRAM SEE SHEET 31 AND 32 FOR DETAILS

PEORIA COUNTY HIGHWAY DEPARTMENT
 CONSTRUCTION DETAILS
 STA. 3+205.407 TO STA. 3+291.960
 AIRPORT ROAD
 STA. 10+360.000 TO STA. 10+510.000
 PFEIFFER ROAD
 SEC. 03-00019-11-FP