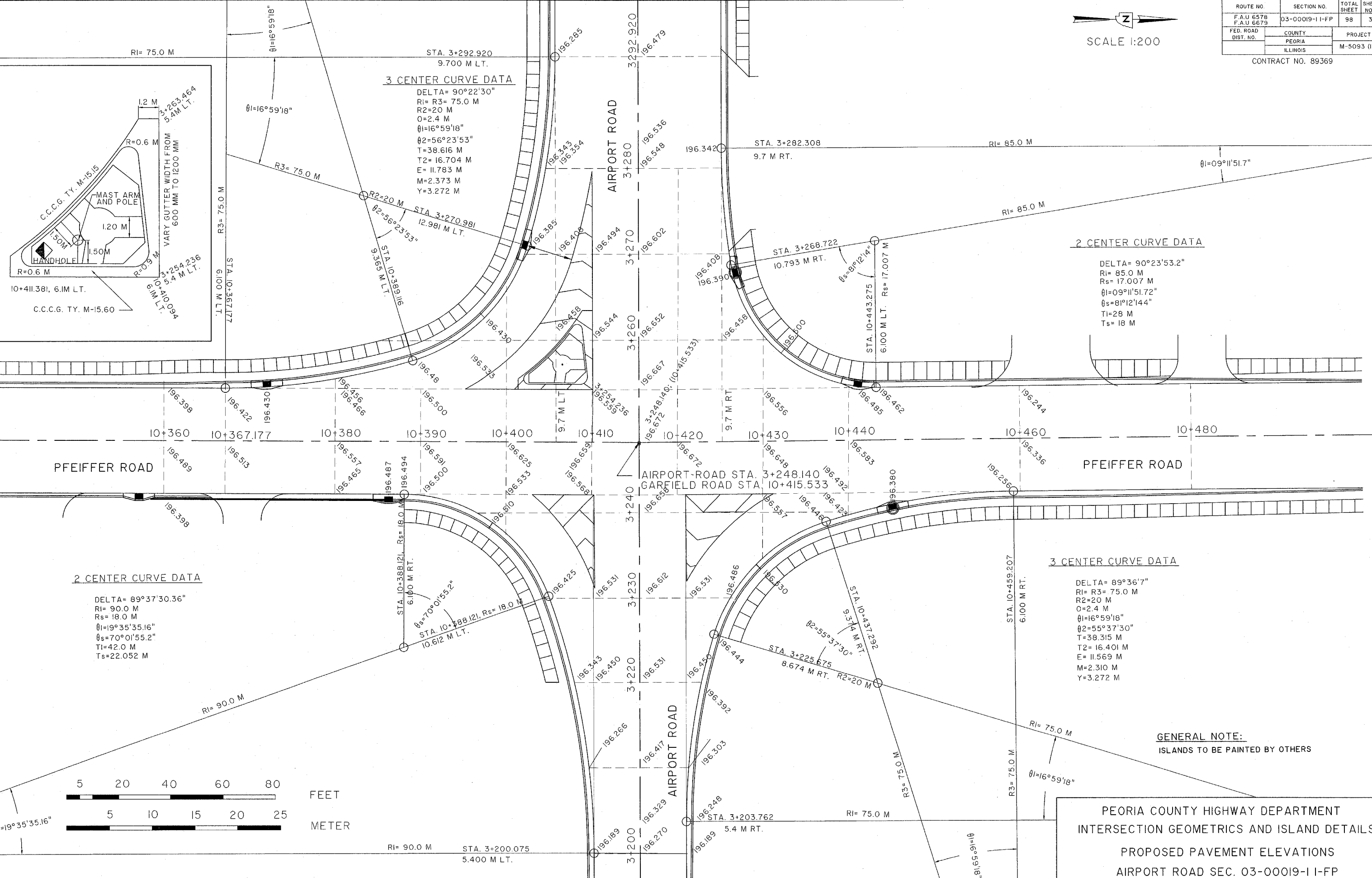


ROUTE NO.	SECTION NO.	TOTAL SHEET NO.	SHEET NO.
F.A.U. 6578 F.A.U. 6679	03-00019-1 I-FP	98	30
FED. ROAD DIST. NO.	COUNTY	PROJECT	
	PEORIA	M-5093 (104)	
	ILLINOIS		



SCALE 1:200

CONTRACT NO. 89369



**3 CENTER CURVE DATA**

DELTA= 90°22'30"  
 Ri= R3= 75.0 M  
 R2=20 M  
 O=2.4 M  
 θ1=16°59'18"  
 θ2=56°23'53"  
 T=38.616 M  
 T2= 16.704 M  
 E= 11.783 M  
 M=2.373 M  
 Y=3.272 M

**2 CENTER CURVE DATA**

DELTA= 90°23'53.2"  
 Ri= 85.0 M  
 Rs= 17.007 M  
 θ1=09°11'51.7"  
 θs=81°12'14.4"  
 T1=28 M  
 Ts= 18 M

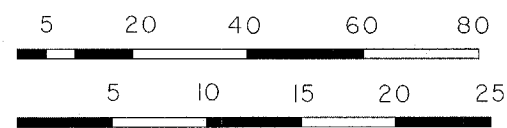
**2 CENTER CURVE DATA**

DELTA= 89°37'30.36"  
 Ri= 90.0 M  
 Rs= 18.0 M  
 θ1=19°35'35.16"  
 θs=70°01'55.2"  
 T1=42.0 M  
 Ts=22.052 M

**3 CENTER CURVE DATA**

DELTA= 89°36'7"  
 Ri= R3= 75.0 M  
 R2=20 M  
 O=2.4 M  
 θ1=16°59'18"  
 θ2=55°37'30"  
 T=38.315 M  
 T2= 16.401 M  
 E= 11.569 M  
 M=2.310 M  
 Y=3.272 M

**GENERAL NOTE:**  
 ISLANDS TO BE PAINTED BY OTHERS



PEORIA COUNTY HIGHWAY DEPARTMENT  
 INTERSECTION GEOMETRICS AND ISLAND DETAILS  
 PROPOSED PAVEMENT ELEVATIONS  
 AIRPORT ROAD SEC. 03-00019-1 I-FP