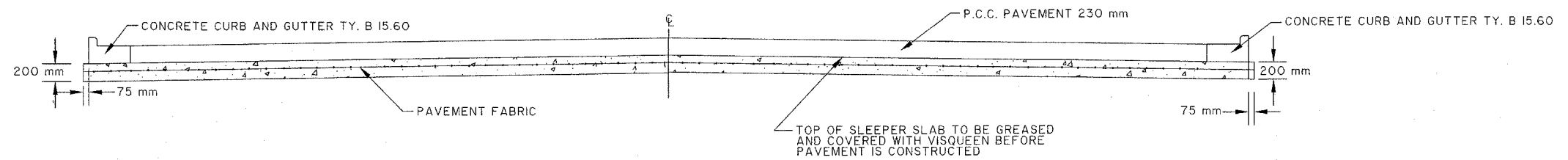
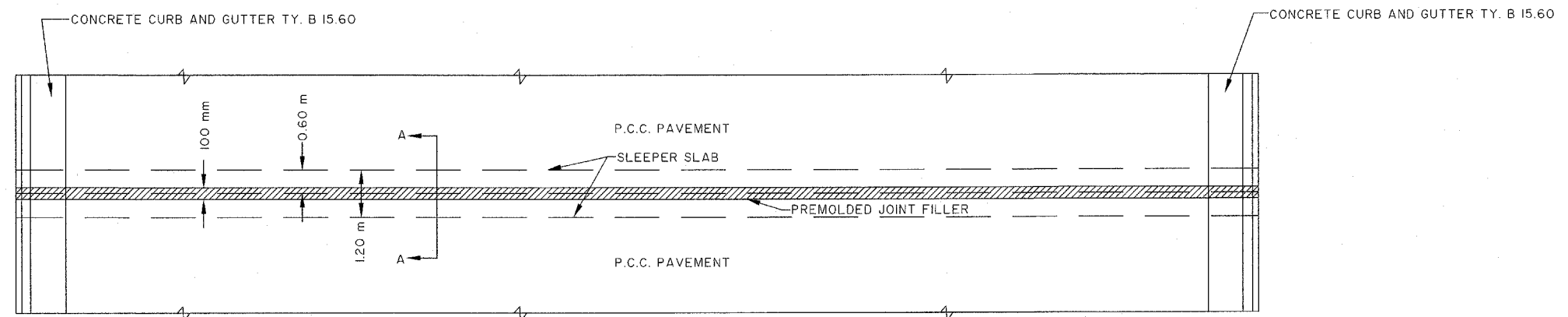


ROUTE NO.	SECTION NO.	TOTAL SHEET NO.
F.A.U. 6578	03-00019-1 I-FP	98 36
FED. ROAD DIST. NO.	COUNTY	PROJECT
	PEORIA	M-5093 (97)
ILLINOIS		

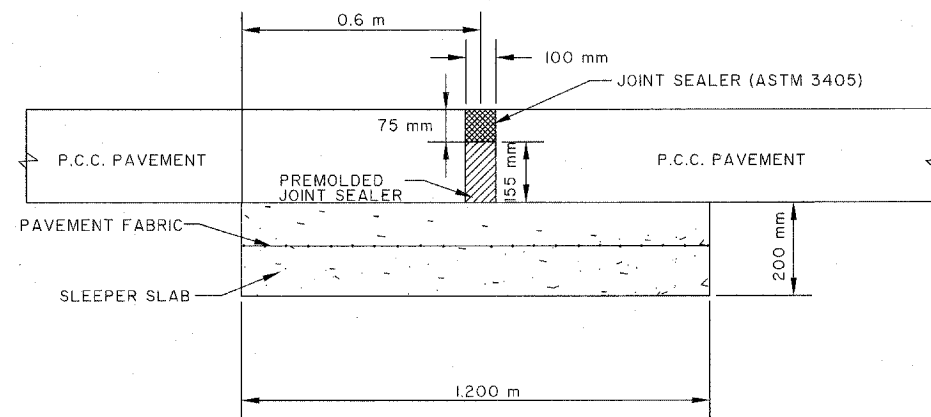
CONTRACT NO. 89369



TYPICAL SECTION - SLEEPER SLAB



PLAN - SLEEPER SLAB



SECTION A-A

NOTE: SURFACE OF SLEEPER SLAB TO BE FINISHED SMOOTH
 EXPANSION JOINT WITH SLEEPER SLAB REQUIRED PER
 300 METERS OF CONC. PAVEMENT
 100 mm EXPANSION JOINT SHALL BE CONTINUED THROUGH
 MEDIAN AND CONC. CURB AND GUTTER
 SLEEPER SLAB REQUIRED AT THE STATION AS DIRECTED
 BY THE FIELD ENGINEER

PEORIA COUNTY HIGHWAY DEPT.

SLEEPER SLAB DETAILS

(NOT TO SCALE)

P.C.H.D. SLEEPER SLAB DETAILS
 AUTOCAD DRAWING BY A.D. 04-06-1998