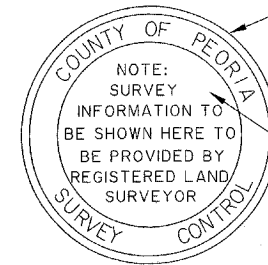
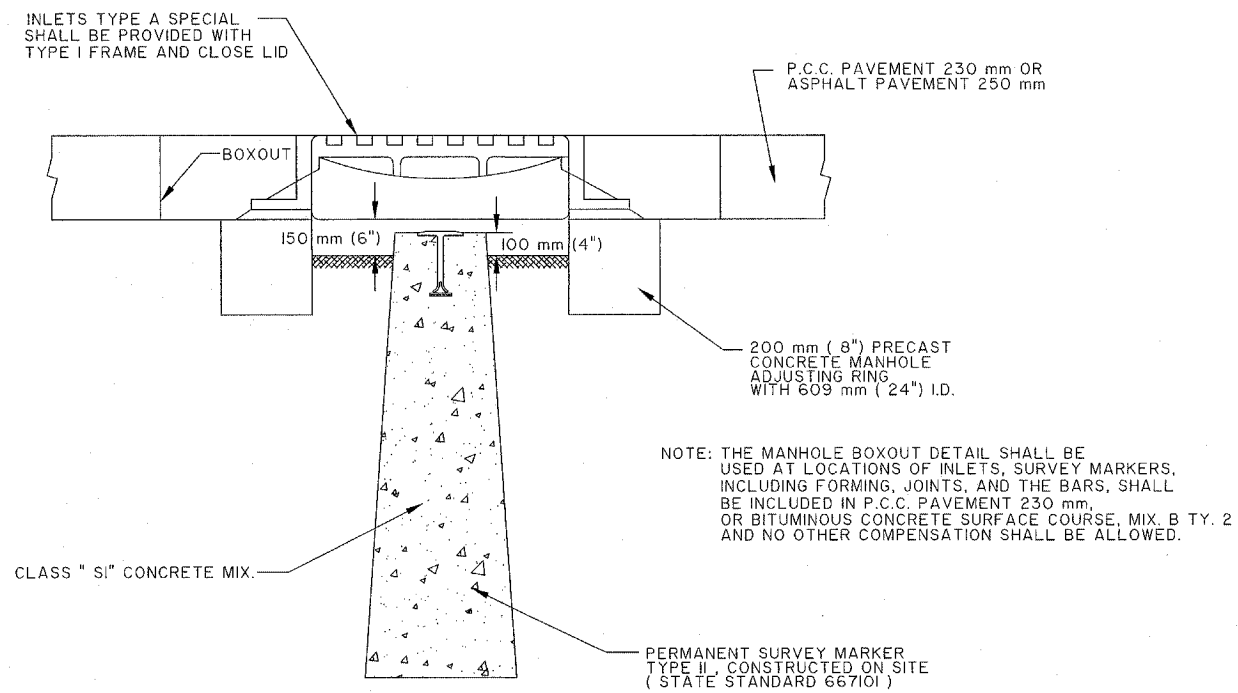


ROUTE NO.	SECTION NO.	TOTAL SHEET NO.	SHEET NO.
F.A.U. 6578	03-00019-1 I-FP	98	38
FED. ROAD DIST. NO.	COUNTY	PROJECT	
	PEORIA	M-5093 (97)	
	ILLINOIS		

CONTRACT NO. 89369



THE BRONZE TABLET USED FOR THE PERMANENT SURVEY MARKERS, TYPE II SHALL CONFORM TO THOSE SHOWN ON STATE OF ILLINOIS STD. 667101, EXCEPTING THE TOP SURFACE SHALL BE LETTERED AS SHOWN.

25.4 mm (1") POLISHED SURFACE

TOP OF BRONZE TABLET

PERMANENT SURVEY MARKERS
WITH TYPE I FRAME AND CLOSED LID

P.C.H.D. PERMANENT SURVEY MARKERS, TY. II WITH FRAM AND CLOSED LID DETAILS
AUTOCAD DRAWING BY A.D. 04-06-1998

PEORIA COUNTY HIGHWAY DEPT.
PERMANENT SURVEY MARKERS, TYPE I
WITH FRAME AND CLOSED LID DETAILS
(NOT TO SCALE)