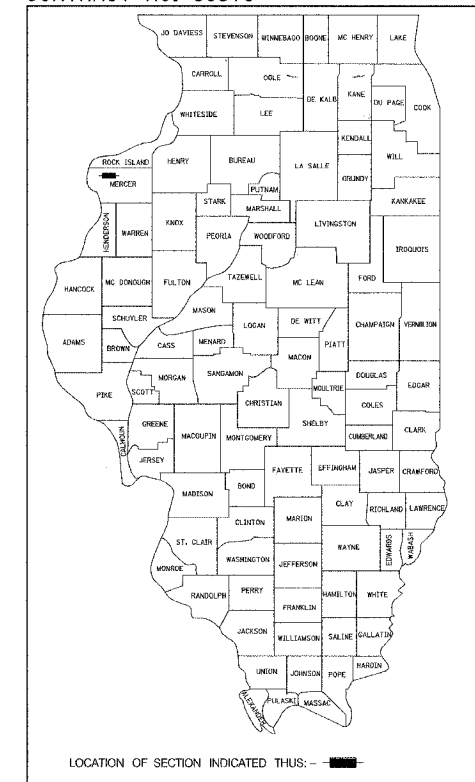


ROUTE	SECTION	COUNTY	TOTAL SHEETS	SHEET NO.
T.R. 274	*	MERCER	9	1
PROJECT				

\* 02-14130-00-BR

CONTRACT NO. 89378



STATE OF ILLINOIS  
DEPARTMENT OF TRANSPORTATION

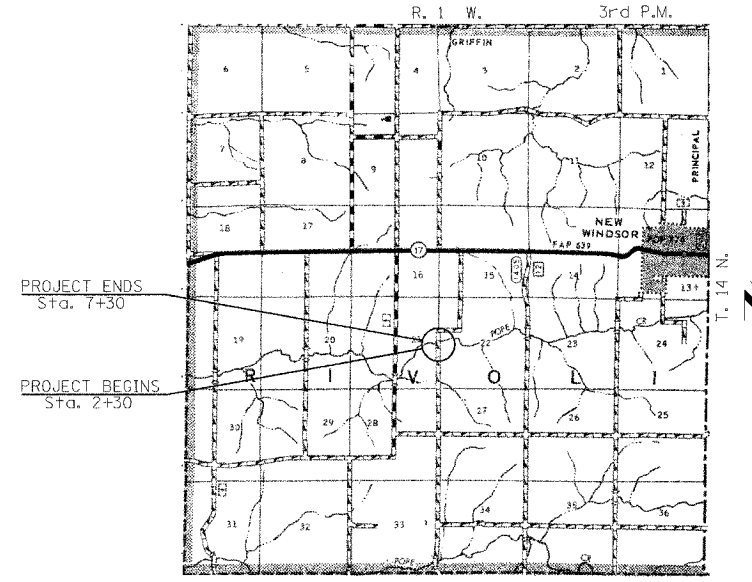
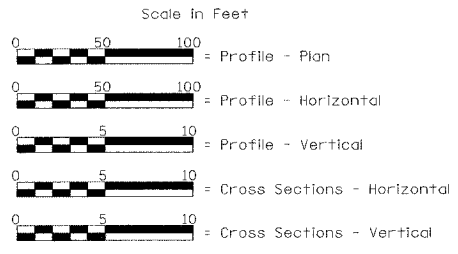
PLANS FOR PROPOSED  
HIGHWAY BRIDGE REPLACEMENT  
AND REHABILITATION PROGRAM  
PROJECT NO. BROS-131(046)  
T.R. 274 OVER NORTH POPE CREEK  
SECTION 02-14130-00-BR  
MERCER COUNTY  
JOB NO. C-94-094-05

INDEX OF SHEETS

- 1 - TITLE SHEET
- 2 - SUMMARY OF QUANTITIES, DETAILS, & TYPICAL SECTIONS
- 3 - PLAN & PROFILE
- 4 - GENERAL PLAN & ELEVATION
- 5 - SUPERSTRUCTURE
- 6 - RAILING
- 7 - ABUTMENTS
- 8 & 9 - CROSS SECTIONS

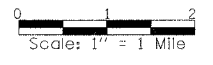
STANDARDS (In Proposal)

- STANDARD 000001-04
- STANDARD 280001-02
- STANDARD 515001-02
- STANDARD 702001-06
- STANDARD BLR 21-6



LOCATION PLAN

Length of Section = 500.00 Feet = 0.095 Miles



Land Section - 22  
Land Quarter Section - S.W.  
Political Township - Rivolt  
A.D.T. = 75 (2004)  
A.D.T. = 92 (2024)  
Design Speed - 30 M.P.H.  
Functional Classification - Local Road (Rural)

EXISTING STRUCTURE: SINGLE SPAN TIMBER DECK ON STEEL STRINGERS WITH OPEN CONCRETE ABUTMENTS AND TIMBER WINGWALLS. AN EXISTING STRUCTURE WITH CLOSED CONCRETE ABUTMENTS IS STILL INTACT AND HAS BEEN LEFT IN PLACE UNDERNEATH THE STRUCTURE. ±41'-0 BK.-BK. ABUTMENTS, ±15'-6" FACE-FACE OF RAILING. STEEL ANGLE RAILING. ±15° SKEW RT. FORWARD. EXISTING STRUCTURE NO. 066-4617

PROPOSED STRUCTURE: SINGLE SPAN PRECAST PRESTRESSED CONCRETE DECK BEAM (27") BRIDGE ON OPEN CONCRETE ABUTMENTS AND CONCRETE WINGWALLS. 60'-0" BK.-BK. ABUTMENTS, 24'-0" OUT.-OUT. DECK. TYPE S1 RAILING. 20° SKEW RT. FORWARD. PROPOSED STRUCTURE NO. 066-4624

Approved: *Dec 8 2005*  
*Darryl A. Peterson*  
Signature (Highway Commissioner)



*Christopher P. Kohnke 1/18/06*  
EXPIRATION: 11/30/07

APPROVED: <i>Dec 8 2005</i> <i>Stan J. Raymond</i> COUNTY ENGINEER
PASSED: <i>JTS 2006</i> <i>John J. Tuller</i> DISTRICT FOUR ENGINEER & LOCAL ROADS & STREETS
PASSED: _____ DISTRICT FOUR ENGINEER CONSTRUCTION
Resubmitting For Bid Based on Limited Review: <i>JTS 25 06</i> <i>John J. Tuller</i> DEPUTY DIRECTOR OF HIGHWAYS, REGION THREE ENGINEER
STATE OF ILLINOIS DEPARTMENT OF TRANSPORTATION

TOLL FREE  
"JOINT UTILITY LOCATION INFORMATION FOR EXCAVATORS"  
(411) TELEPHONE NUMBER  
1-800-892-0123

FILE NAME: MCR30035 (REV. 11/22/05)