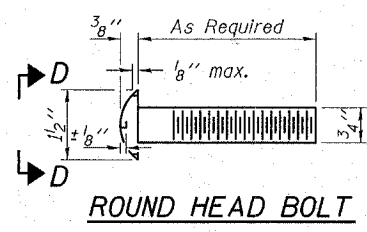
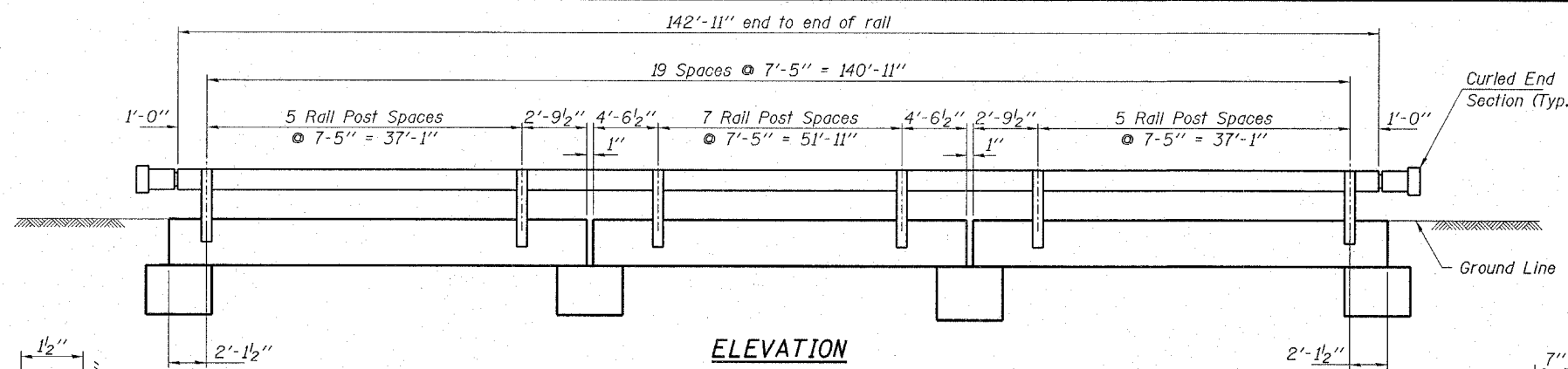


ROUTE NO.	SECTION	COUNTY	TOTAL SHEETS	SHEET NO.
T.R. 57	03-17116-00-BR	SHELBY	16	1

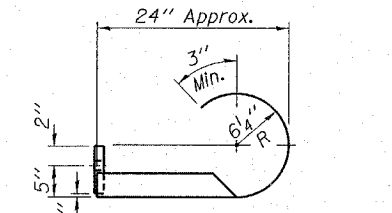
CONTRACT NO. 91354
 Note: Cost of curled end sections shall be included with the Steel Railing. (4 Required)



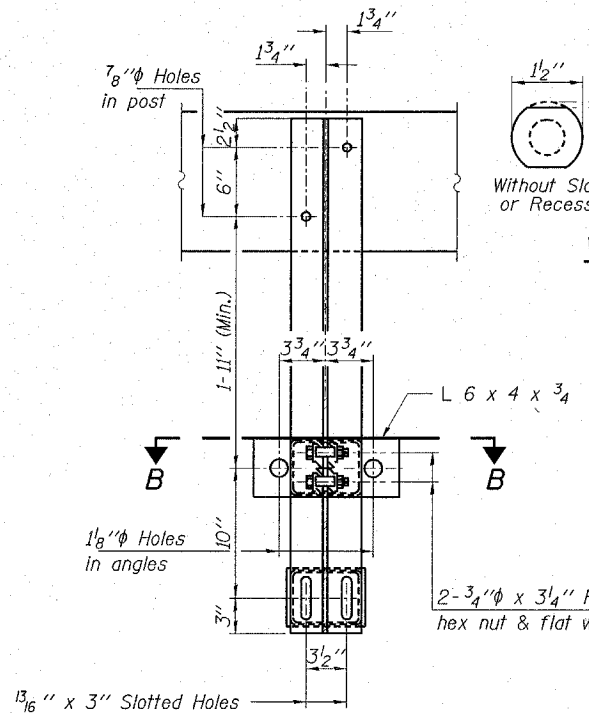
ROUND HEAD BOLT



ELEVATION

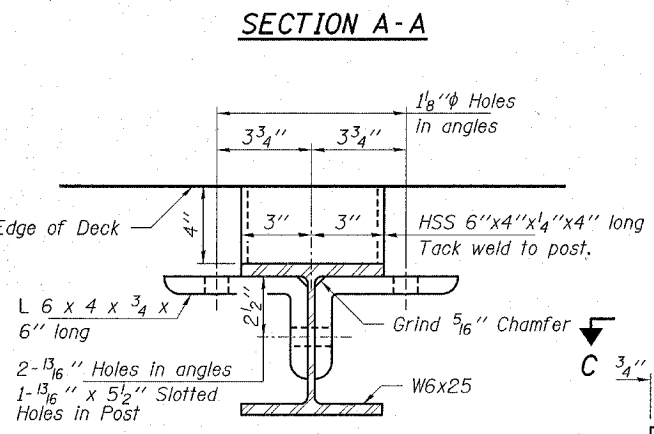


SECTION E-E CURLED END SECTION DETAILS

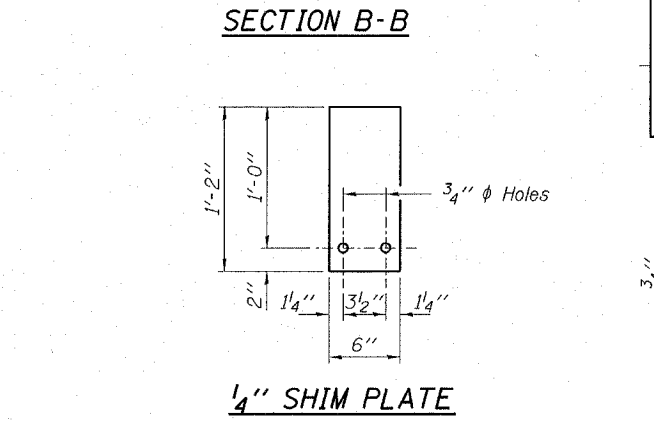


VIEW D-D

2-3/4" x 6" Round Head Bolts (With slot or approved recess in head) with locknut & flat washer. 7/8" Holes in hollow structural section may be drilled in the field.

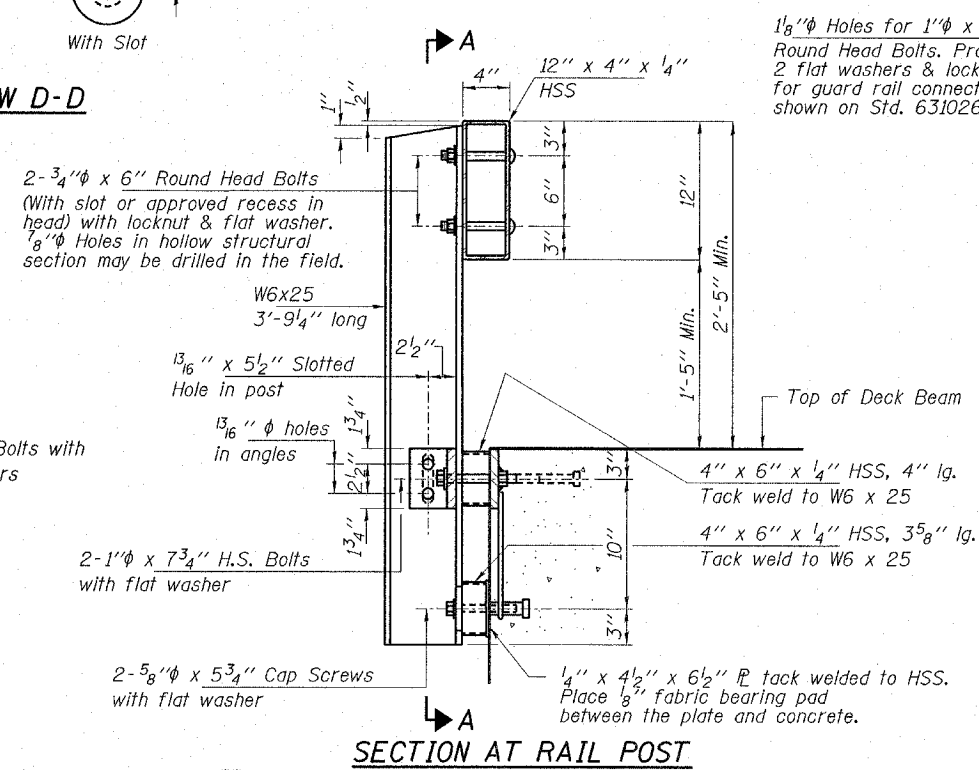


SECTION A-A



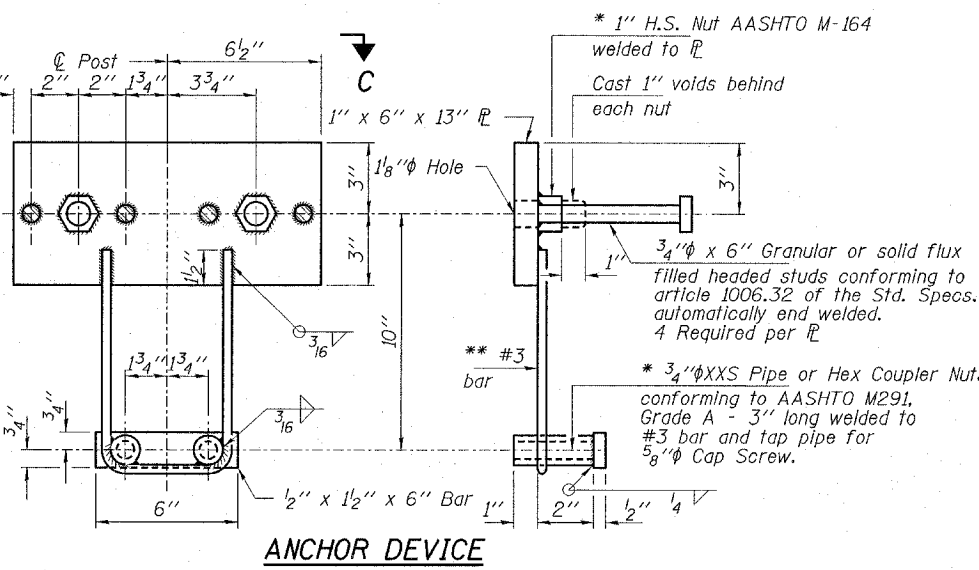
SECTION B-B

1/4" SHIM PLATE



SECTION AT RAIL POST

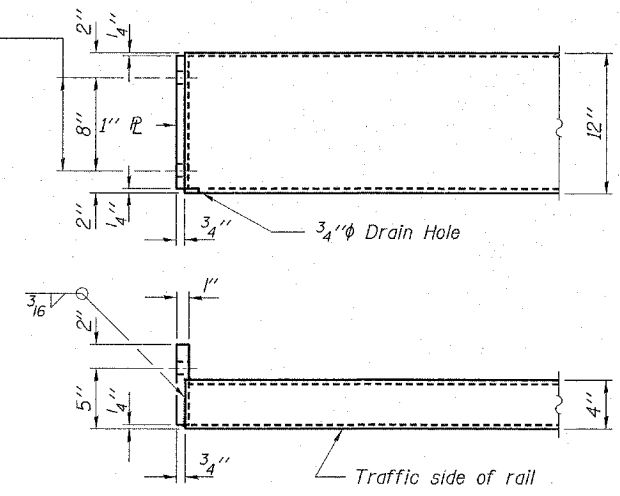
** Whenever the lower insert assemblies interfere with strand locations, the #3 bars shall be cut and adjusted in order to allow raising or lowering of the lower inserts. Maximum adjustment not to exceed 2".



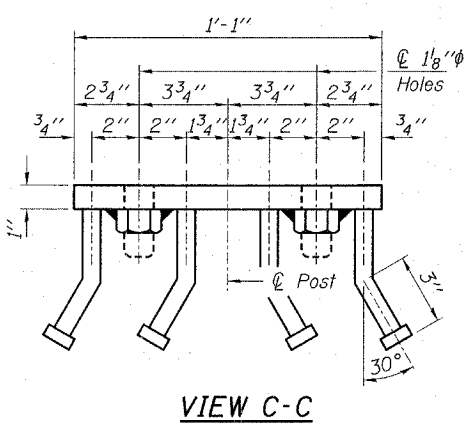
ANCHOR DEVICE

* Threaded areas shall be plugged or blocked off during casting of beam.

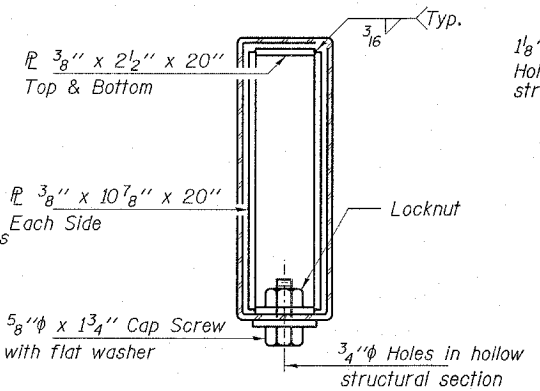
1 1/8" Holes for 1" x 4" Round Head Bolts. Provide 2 flat washers & locknuts for guard rail connection shown on Std. 631026.



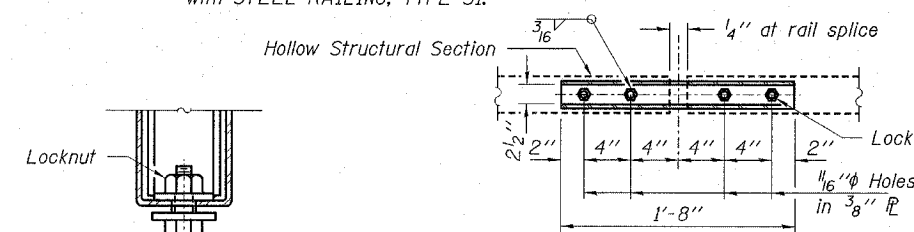
END OF RAIL DETAILS



VIEW C-C



SECTION AT RAIL SPLICE



RAIL SPLICE CONNECTION AT EXPANSION JT.

PLAN-BOTT. SPLICE PIPE TYPICAL

BILL OF MATERIAL

Item	Unit	Quantity
Steel Railing, Type S1	Foot	286

HLR
 Rice, Berry and Associates
 A Division of Hampton, Lenzini and Renwick, Inc.
 CIVIL & Structural Engineers
 3085 Stevenson Drive
 Suite 201
 Springfield, Illinois 62703
 217-546-3400
 P.O. Box 1036
 DuQuoin, Illinois 62832
 618-790-4637
 Account Number 12-87-0014-1
 Date: 01/20/06
 DESIGNED: T.P.L. CHECKED: S.W.M. DRAWN: D.T.M.

RAILING DETAILS
SECTION 03-17116-00-BR
RIDGE ROAD DISTRICT
SHELBY COUNTY
STRUCTURE NO. 087-3541 / STATION 79+80