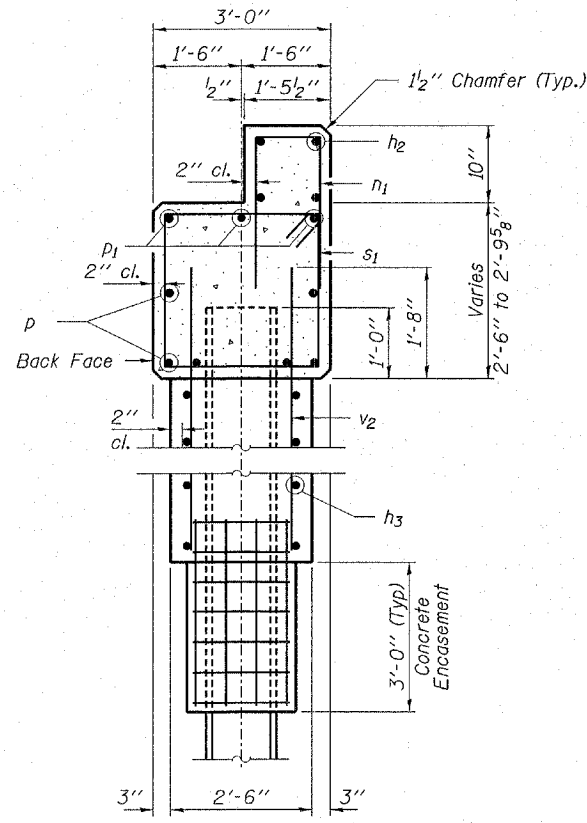
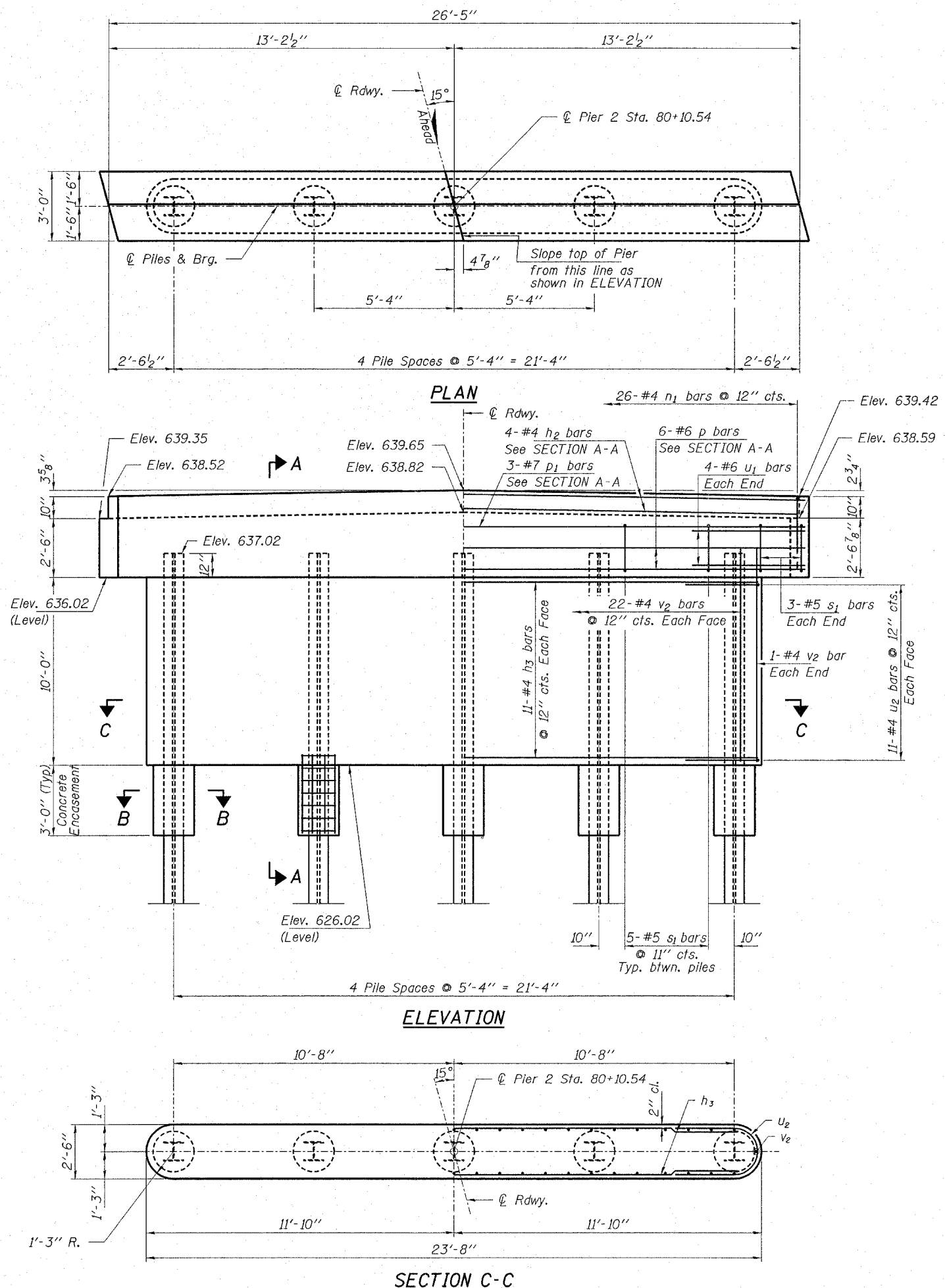
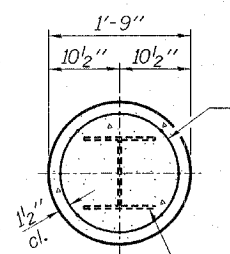


CONTRACT NO. 91354



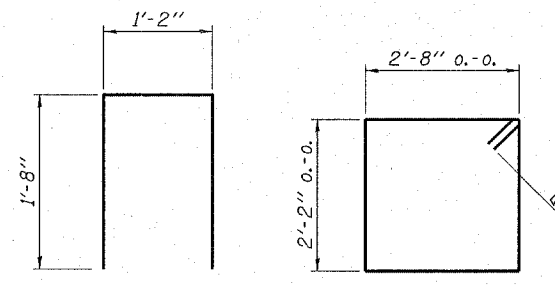
SECTION A-A



SECTION B-B

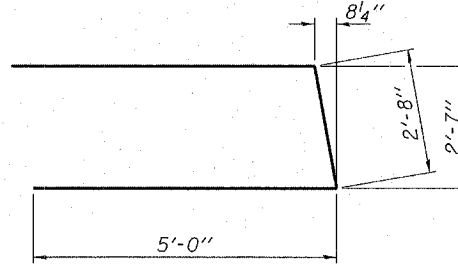
Welded wire fabric 6 x 6-W4.0 x W4.0 weighing 58#/100 sq. ft. The cost of Excavation and Reinforcement is included in the cost of Concrete Encasement. Forms for Encasement may be omitted when soil conditions will permit.

Steel Pile HP10x42

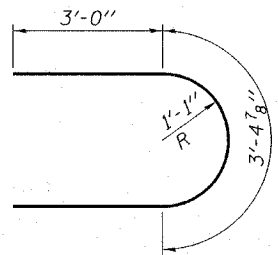


BAR n1

BAR s1



BAR u1



BAR u2

BILL OF MATERIAL - PIER 2

BAR NO.	NO.	SIZE	LENGTH	SHAPE
h2	4	#4	26'-1"	—
h3	22	#4	21'-4"	—
n1	26	#4	4'-6"	□
p	6	#6	26'-1"	—
p1	3	#7	26'-1"	—
s1	26	#5	10'-7"	□
u1	8	#6	12'-8"	—
u2	22	#4	9'-5"	—
v2	46	#4	11'-6"	—
Concrete Structures			Cu. Yd.	30.6
Reinforcement Bars			Pound	1,790
Steel Piles HP10x42			Foot	260
Test Pile Steel HP10x42			Each	1
Concrete Encasement			Cu. Yd.	1.3
Underwater Structure Exc. Protection, Location 2			Each	1

PILE DATA

Type.....Steel HP10x42  
 No. Req'd. (Pier 2).....5\*  
 Capacity.....49 T/Pile  
 Est. Length.....65 Feet/Pile

\* Includes one test pile to be driven in a permanent location at each Pier.

**ILR**  
 Rice, Berry and Associates  
 A Division of Hampton, Lenzini and Renwick, Inc.  
 Civil & Structural Engineers  
 3085 Stevenson Drive  
 Suite 201  
 Springfield, Illinois 62703  
 217-546-3400  
 P.O. Box 1036  
 DuQuoin, Illinois 62832  
 618-790-4637  
 Account Number 12-87-0014-1  
 Date: 01/20/06  
 DESIGNED: T.P.L. CHECKED: S.W.M. DRAWN: D.T.M.

**PIER 2**  
 SECTION 03-17116-00-BR  
 RIDGE ROAD DISTRICT  
 SHELBY COUNTY  
 STRUCTURE NO. 087-3541 / STATION 79+80