

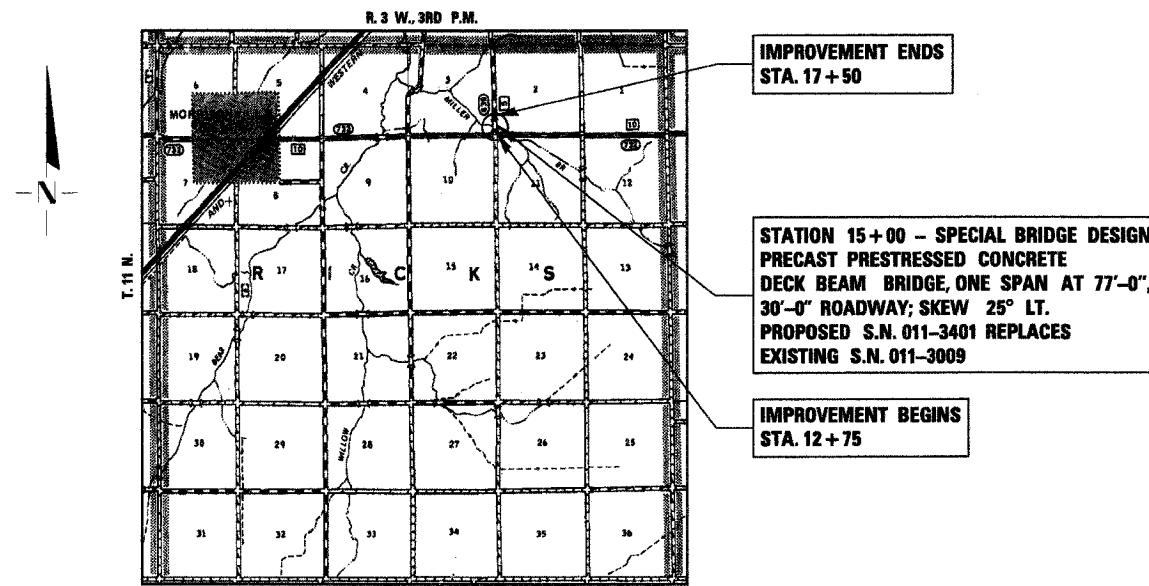
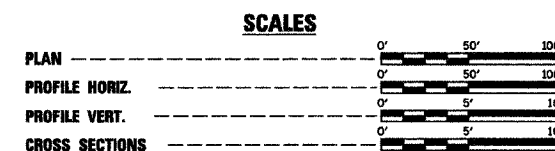
ROUTE NO.	SECTION	COUNTY	TOTAL SHEETS	SHEET NO.
C.H. 5 FAS 639	03-00087 -00-BR	CHRISTIAN	12	1
ROAD DIST.	ILLINOIS	PROJ. NO. BR05-639(104)		

STATE OF ILLINOIS
DEPARTMENT OF TRANSPORTATION
DIVISION OF HIGHWAYS
PLANS FOR PROPOSED
BRIDGE REPLACEMENT AND REHABILITATION PROGRAM
COUNTY HIGHWAY 5 (F.A.S. RTE. 639)
SECTION 03-00087-00-BR
CHRISTIAN COUNTY
PROJ. NO. BRS-639(104)
JOB NUMBER C-96-218-04

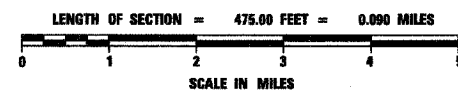
INDEX OF SHEETS	
SHEET NO.	TITLE
1.	COVER SHEET
2.	SUMMARY OF QUANTITIES, GENERAL NOTES & TYPICAL SECTIONS
3.	PLAN AND PROFILE SHEET
4.	SHOULDER AND GUARDRAIL WIDENING DETAILS
5.-9.	BRIDGE PLANS
10.-12.	STATION CROSS SECTIONS

STANDARDS

- 280001-02
- 515001-02
- 630001-06
- 630301-03
- 631026-02
- 635006-02
- 702001-06
- BLR 21-6



LOCATION PLAN



3R DESIGN
MAJOR COLLECTOR (RURAL)
ADT 250-400
CURRENT A.D.T. = 298
DESIGN SPEED 40 M.P.H.



Fred J. Stone, Jr. (12-1-05)
 ILLINOIS PROFESSIONAL NO. 26065

EXPIRES 11-30-07

TOLL FREE JOINT UTILITY LOCATING INFORMATION FOR EXCAVATORS (J.U.L.I.E.)
TELEPHONE NUMBER 1-800-892-0123

APPROVED	12-08 2005 <i>Craig D. Feys</i> COUNTY ENGINEER
PASSED	JANUARY 4 2006 <i>Jim Felt</i> DISTRICT SIX ENGINEER OF LOCAL ROADS & STREETS
PASSED	<i>Jan S</i> 2006 DISTRICT SIX ENGINEER OF CONSTRUCTION
RELEASING FOR BID BASED ON LIMITED REVIEW	JANUARY 4 2006 <i>Christine M. Reed</i> DEPUTY DIRECTOR OF HIGHWAYS, REGION FOUR ENGINEER
STATE OF ILLINOIS DEPARTMENT OF TRANSPORTATION	

CONTRACT NO. 93402

4440 ASH GROVE
 SPRINGFIELD, IL 62707
 (217) 793-8800
 casinc@famvid.com

OZYURT AND STONE, INC.
 CONSULTING ENGINEERS