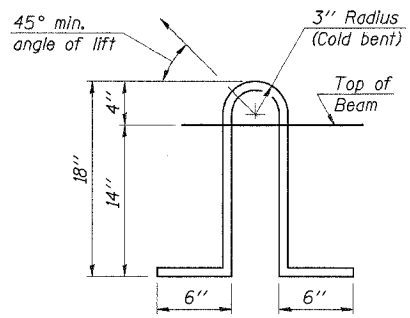
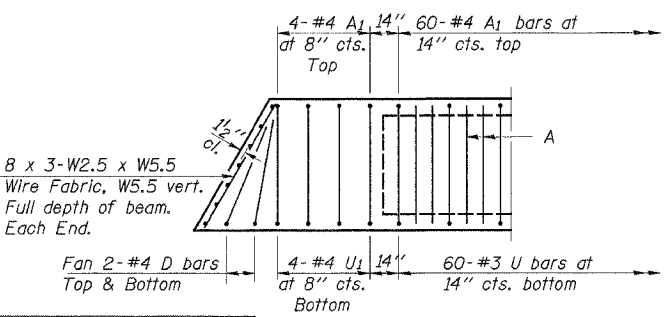
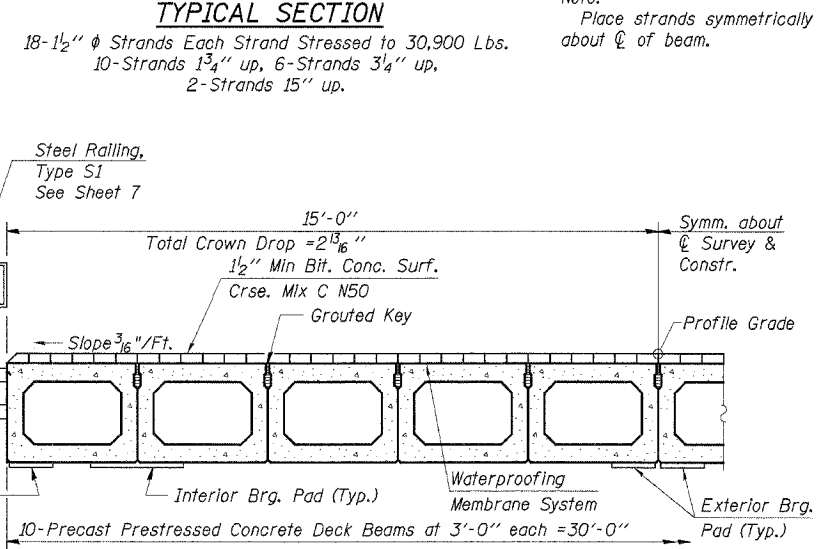
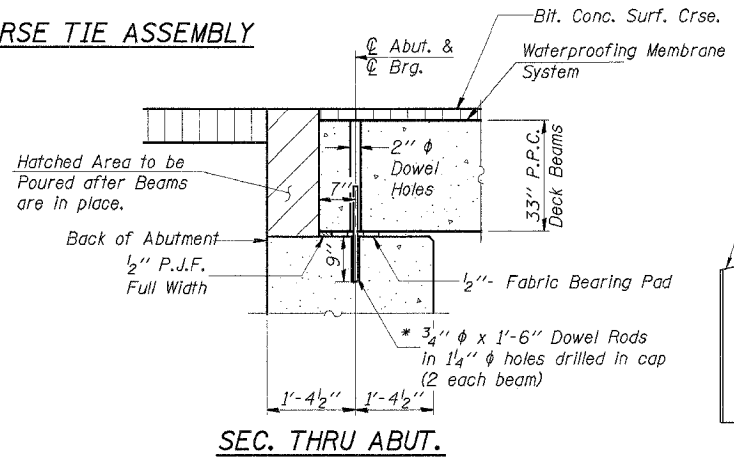
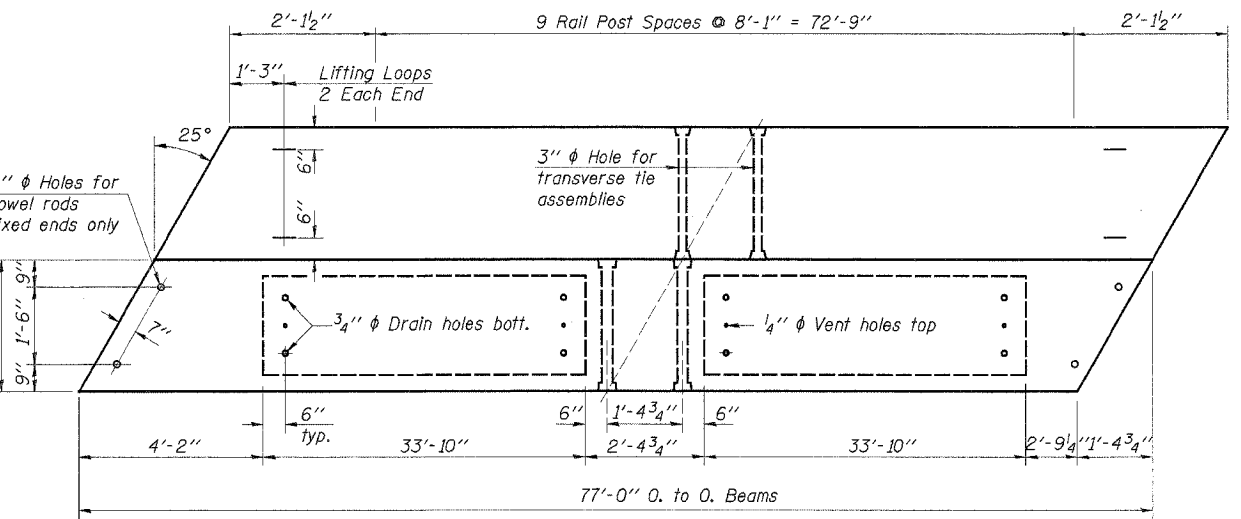
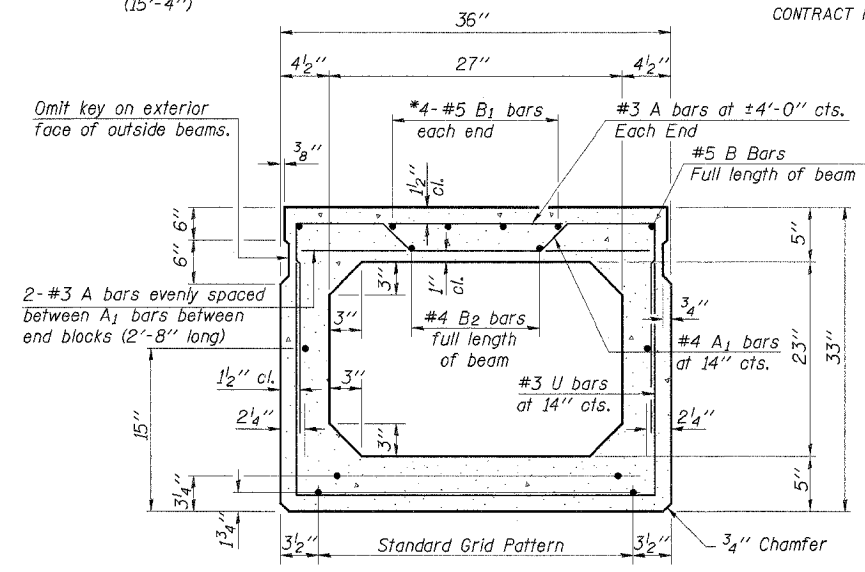
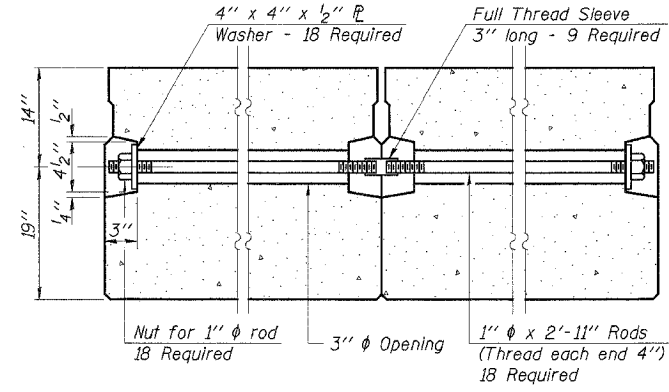
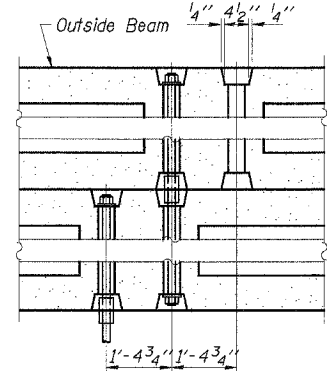
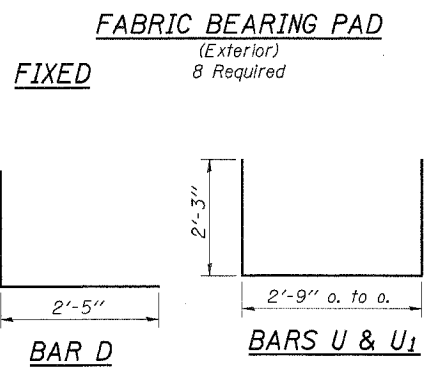
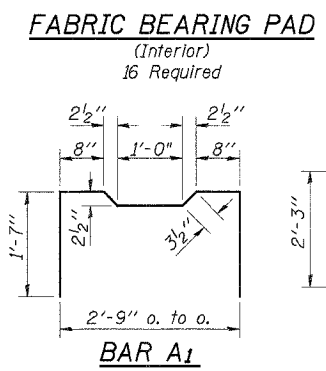
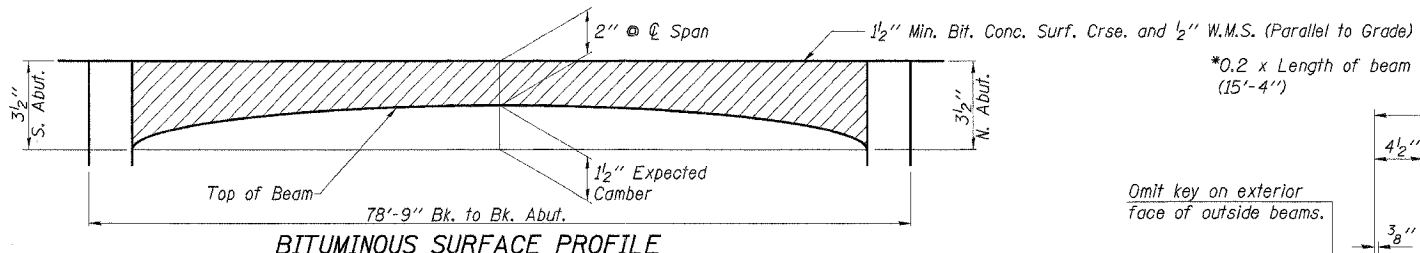
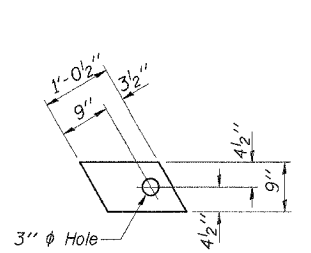
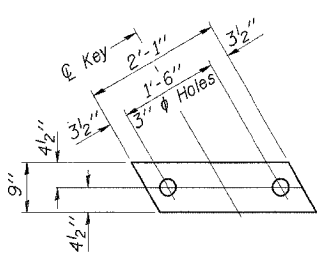


ROUTE NO.	SECTION	COUNTY	TOTAL SHEETS	SHEET NO.
C.H. 5 FAS 639	03-00087 -00-BR	CHRISTIAN	12	6
ILLINOIS			CONTRACT NO. 3402	



DESIGNED	FJS
CHECKED	SFM
DRAWN	SAP & KTR
CHECKED	SFM

PD-5-L 9-1-03

Note A: \*Dowel Rods to be grouted after beams are in place and allowed to cure (Min. 24 hrs.) prior to grouting the shear keys.

Notes: The top surface of the beams shall be finished in accordance with Article 504.06 of the Standard Specifications except that the surface shall not be roughed by brooming. The finished surface shall be free of depressions or high spots with sharp corners and the top edge of keys shall be rounded or chamfered a min. of 1/4".

**NOTES**

Prestressing steel shall be uncoated high strength, low relaxation 7-wire strand, Grade 270. The nominal diameter shall be 1/2" and the nominal cross-sectional area shall be 0.153 sq. in. Lifting loops shall be 3-1/2" φ-270 ksi strands, as shown. The 1" φ rods in the transverse tie assembly shall be tightened to a snug fit and the threads set. Pockets that receive transverse tie bar on outside shall be filled with grout after transverse tie assembly is in place. Non prestressing steel shall conform to AASHTO M-31, M-42 or M-53 Grade 60. The bearing seat surfaces shall be adjusted by shimming to assure firm and even bearing. Two 1/8" fabric adjusting shims of the dimensions of the Exterior Bearing Pad shall be provided for each bearing. Keyway surfaces shall be cleaned to remove form all or other bond breaking material prior to shipment of the beams. Cleaning shall be done by sandblasting the keyway areas between top of the beam and the bottom edge of the key. Corrosion Inhibitor, as covered in the Special Provisions, shall be used in the concrete for precast prestressed concrete deck beams. Required Release Strength, f'ci, shall be 4,000 p.s.i. Rail post anchor devices shall be cast into outside beam as elsewhere specified. See Special Provisions for review and distribution of shop drawings.

**BILL OF MATERIAL**

Item	Unit	Quantity
Precast Prestressed Concrete Deck Beams (33" Depth)	Sq. Ft.	2310
Bit. Conc. Surf. Crse., Mix C, N50	Ton	30
Waterproofing Membrane System	Sq. Yd.	257
P.C. Mortar Fairing Course	Foof	200
Estimated Total Weight (One Beam) = 55,120 Pounds		

**SUPERSTRUCTURE**  
COUNTY HIGHWAY 5  
SECTION 03-00087-00-BR  
CHRISTIAN COUNTY  
STATION 15+00

4440 ASH GROVE SPRINGFIELD, IL 62707 (217) 793-8600 casinc@famvid.com	<b>OZYURT AND STONE, INC.</b> CONSULTING ENGINEERS	JOB NO.: 0305 FILE: SUPER.DGN DATE: 03-15-04
--	---	--