

ROUTE NO.	SECTION	COUNTY	TOTAL SHEETS	SHEET NO.
C.H. ID FAS 732	01-00083 -00-BR	CHRISTIAN	12	1
ILLINOIS		PROJ. NO. BRS-732(144)		

# STATE OF ILLINOIS DEPARTMENT OF TRANSPORTATION DIVISION OF HIGHWAYS PLANS FOR PROPOSED BRIDGE REPLACEMENT AND REHABILITATION PROGRAM

**SECTION 01-00083-00-BR  
CHRISTIAN COUNTY  
PROJECT NO. BRS-732(144)  
COUNTY HIGHWAY 10 (F.A.S. RTE. 732)  
JOB NUMBER C-96-238-04**

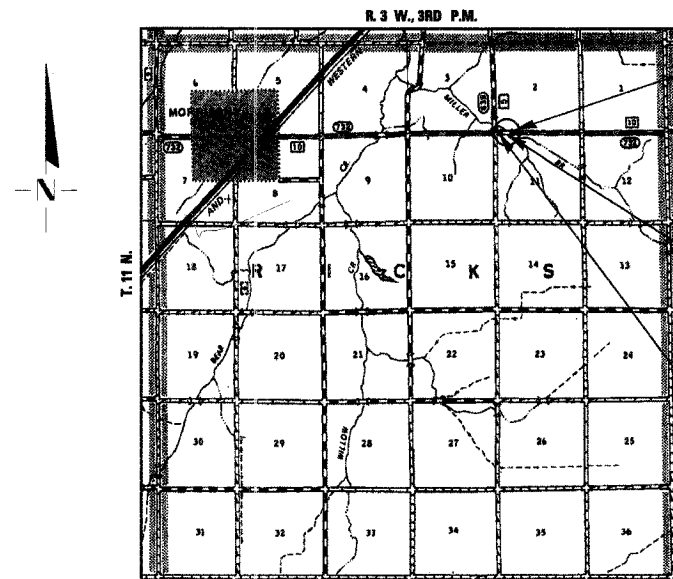
INDEX OF SHEETS	
SHEET NO.	TITLE
1.	COVER SHEET
2.	SUMMARY OF QUANTITIES, GENERAL NOTES & TYPICAL SECTIONS
3.	PLAN AND PROFILE SHEET
4.	SHOULDER AND GUARDRAIL WIDENING DETAILS
5-9	BRIDGE PLANS
10-12	STATION CROSS SECTIONS

**STANDARDS**

- 280001-02
- 515001-02
- 630001-06
- 630301-03
- 631011-02
- 631032-01
- 635006-02
- 702001-06
- BLR 21-6

**SCALES**

PLAN	-----	0' 50' 100'
PROFILE HORIZ.	-----	0' 50' 100'
PROFILE VERT.	-----	0' 5' 10'
CROSS SECTIONS	-----	0' 5' 10'

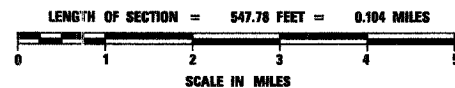


IMPROVEMENT ENDS  
STA. 27+47.78

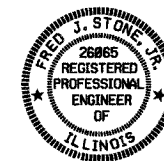
STATION 24+99 - SPECIAL BRIDGE DESIGN  
PRECAST PRESTRESSED CONCRETE  
DECK BEAM BRIDGE, ONE SPAN AT 77'-0",  
30'-0" ROADWAY; SKEW 34° RT.  
PROPOSED S.N. 011-3397 REPLACES  
EXISTING S.N. 011-3011

IMPROVEMENT BEGINS  
STA. 22+00

**LOCATION PLAN**



**3R DESIGN  
MAJOR COLLECTOR (RURAL)  
CURRENT A.D.T. = 750  
DESIGN SPEED 50 M.P.H.**



*Fred J. Stone, Jr.* (12-1-05)  
ILLINOIS PROFESSIONAL NO. 26065

EXPIRES 11-30-07

TOLL FREE JOINT UTILITY LOCATING  
INFORMATION FOR EXCAVATORS (J.U.L.I.E.)  
TELEPHONE NUMBER 1-800-892-0123

APPROVED	<i>12-08</i> 2005 <i>Chris D. Jurek</i> COUNTY ENGINEER			
PASSED	<i>JANUARY 4</i> 2006 <i>Jim Jurek</i> DISTRICT SIX ENGINEER OF LOCAL ROADS & STREETS			
PASSED	<i>Jan 5</i> 2006 <i>WR Jurek</i> DISTRICT SIX ENGINEER OF CONSTRUCTION			
RELEASING FOR BID BASED ON LIMITED REVIEW	<i>JANUARY 4</i> 2006 <i>Christine M Reed</i> DEPUTY DIRECTOR OF HIGHWAYS, REGION FOUR ENGINEER			
STATE OF ILLINOIS DEPARTMENT OF TRANSPORTATION				

CONTRACT NO. 93403

4440 ASH GROVE  
SPRINGFIELD, IL 62707  
(217) 753-8800  
oasinc@tcmvtd.com

**OZYURT AND STONE, INC.**  
CONSULTING ENGINEERS