

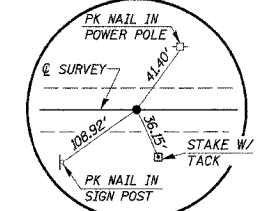
S.W. 1/4, SECTION 2, T. 11 N. R. 3 W., 3rd P.M.

EARL D. CHRISTMAN

BLOOME FARMS, INC.

ROUTE	SECTION	COUNTY	TOTAL SHEETS	SHEET NO.
C.H. 10	01-00083	CHRISTIAN	12	3
F.A.S. 732	-00-BR			
STA. 20+00.00		TO STA. 29+97.65		

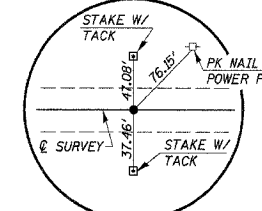
ILLINOIS CONTRACT NO. 93403



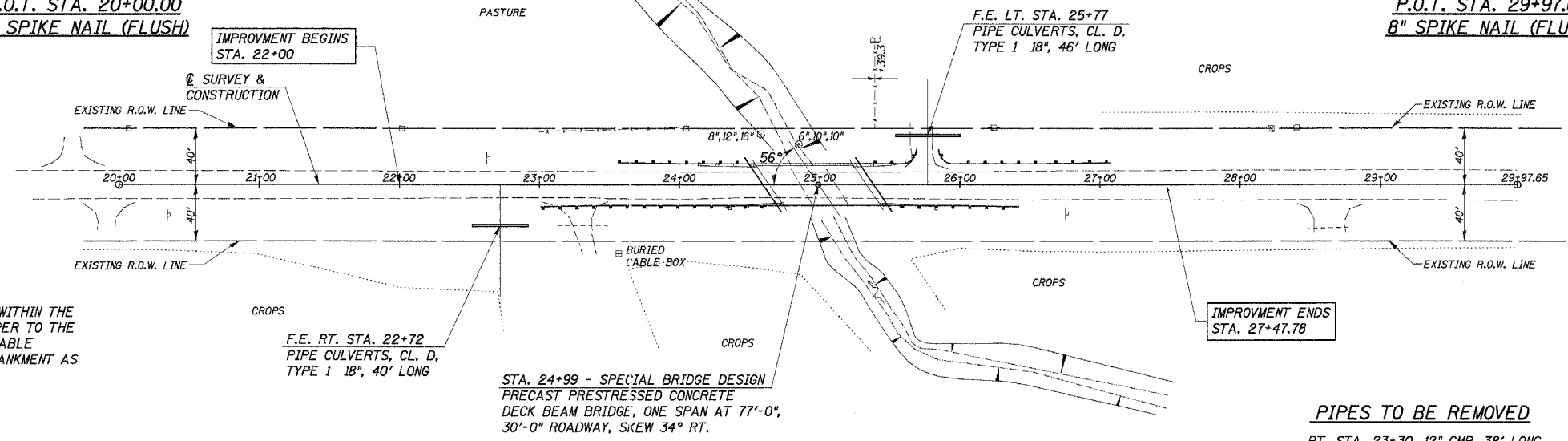
P.O.T. STA. 20+00.00
8" SPIKE NAIL (FLUSH)

ENTRANCES TO BE BUILT

RT. STA. 22+72, F.E.-10.0%, 20' ROADBED
LT. STA. 25+77, F.E.-12.0%, 20' ROADBED
QUANTITIES INCLUDED IN THOSE LISTED



P.O.T. STA. 29+97.65
8" SPIKE NAIL (FLUSH)



CHANNEL EXCAVATION

THE CHANNEL SHALL BE EXCAVATED AS SHOWN WITHIN THE LIMITS OF THE PROPOSED STRUCTURE THEN TAPER TO THE EXISTING CHANNEL AT THE R.O.W. LINES. SUITABLE EXCAVATED MATERIAL TO BE USED IN THE EMBANKMENT AS DIRECTED BY THE ENGINEER.

CHANNEL EXCAVATION = 160 CU. YD.

EXISTING STRUCTURE NO. 011-3011

3-SPAN STEEL I-BEAM BRIDGE WITH CONCRETE SLABS AT 20'-4", 25'-6", 20'-4"; ON OPEN CONCRETE COLUMN PIERS AND SPILL THRU CONCRETE ABUTMENTS, 24'-0" ROADWAY, 28'-4" O.-O. DECK 70'-6" BK.-BK. ABUTS.: 34° RT. SKEW

REMOVAL OF EXISTING STRUCTURES = 1 EACH

OVERHEAD POWER

SHELBY ELECTRIC COOPERATIVE
SHELBYVILLE, IL.

BURIED CABLE

ILLINOIS CONSOLIDATED TELEPHONE CO.
MATTOON, IL.

PIPES TO BE REMOVED

RT. STA. 23+30, 12" CMP, 38' LONG
LT. STA. 25+71, 18" CMP, 38' LONG
QUANTITIES INCLUDED IN "EARTH EXCAVATION".

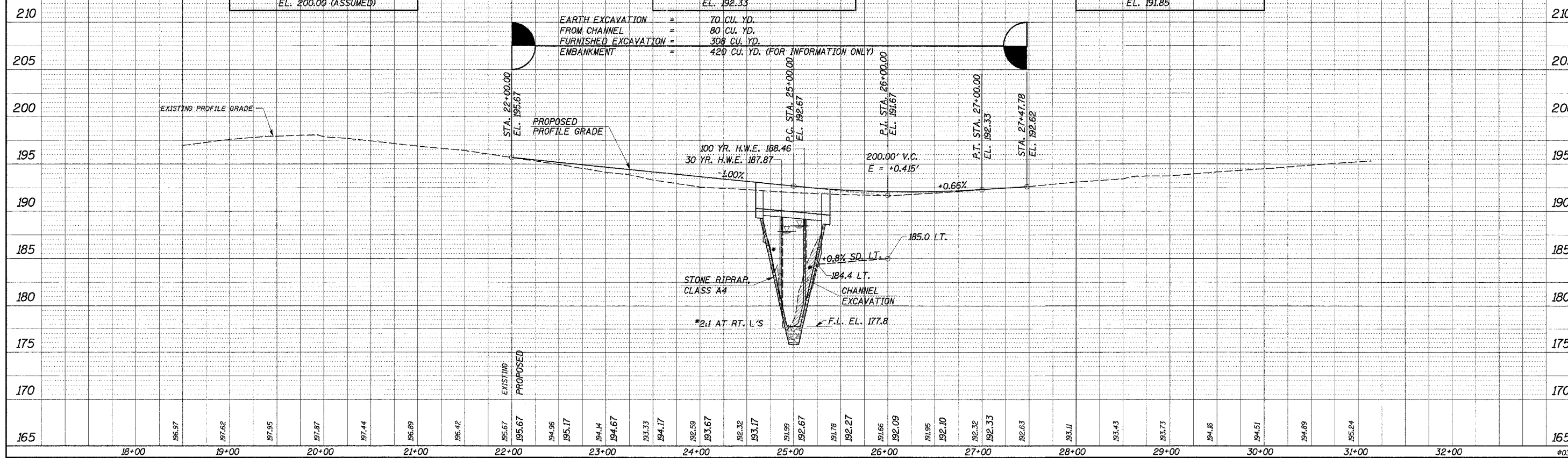
WALNUT LAKE FARMS

N.W. 1/4, SECTION 11, T. 11 N., R. 3 W., 3rd P.M.

B.M. #1 - SPIKE NAIL IN POWER POLE
40' LT. STA. 20+06
EL. 200.00 (ASSUMED)

B.M. #2 - CHISELED "□" ON S.W. WINGWALL
14' RT. STA. 24+74
EL. 192.33

B.M. #3 - SPIKE NAIL IN POWER POLE
40' LT. STA. 28+40
EL. 191.85



PLAN	DATE	BY
DESIGNED		
CHECKED		
PLOTTED		
ALIGNED		
CHECKED		
FILED		
NO.		

PROFILE	DATE	BY
DESIGNED		
CHECKED		
PLOTTED		
ALIGNED		
CHECKED		
FILED		
NO.		