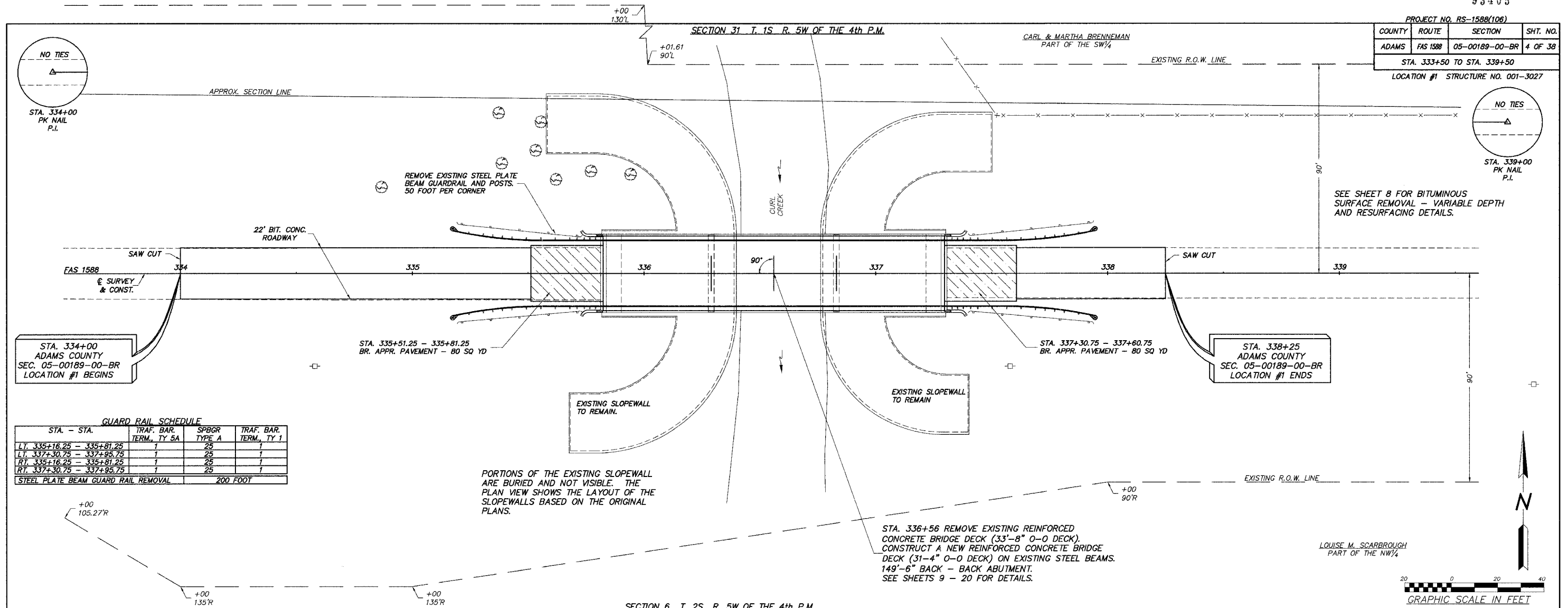


COUNTY	ROUTE	SECTION	SHT. NO.
ADAMS	FAS 1588	05-00189-00-BR	4 OF 38
STA. 333+50 TO STA. 339+50			
LOCATION #1 STRUCTURE NO. 001-3027			



GUARD RAIL SCHEDULE

STA. - STA.	TRAF. BAR. TERM., TY SA	SPBGR TYPE A	TRAF. BAR. TERM., TY 1
LT. 335+16.25 - 335+81.25	1 25	25	1
LT. 337+30.75 - 337+95.75	1 25	25	1
RT. 335+16.25 - 335+81.25	1 25	25	1
RT. 337+30.75 - 337+95.75	1 25	25	1

STEEL PLATE BEAM GUARD RAIL REMOVAL 200 FOOT

