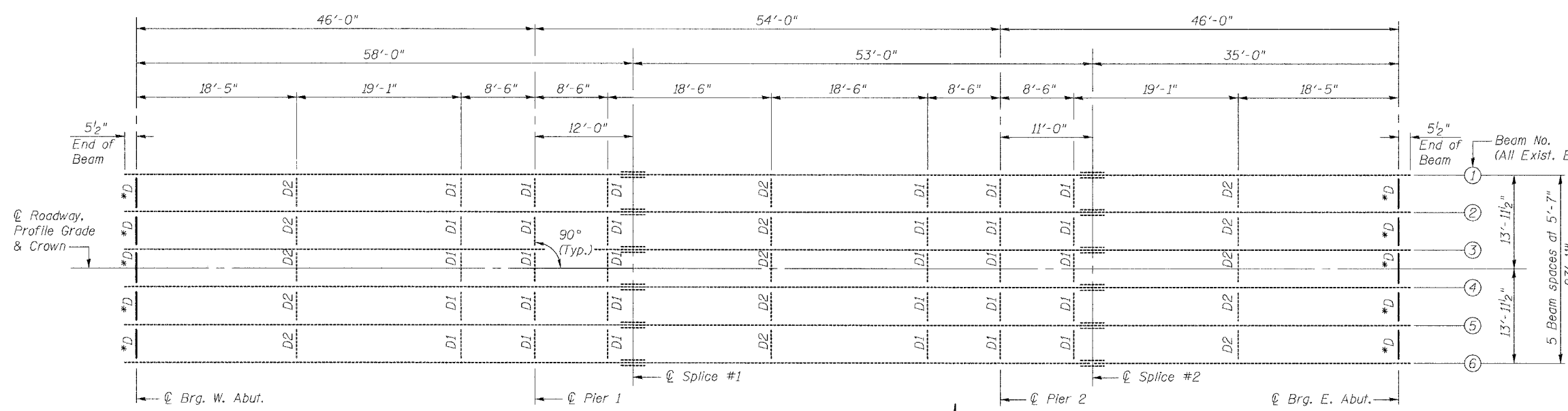


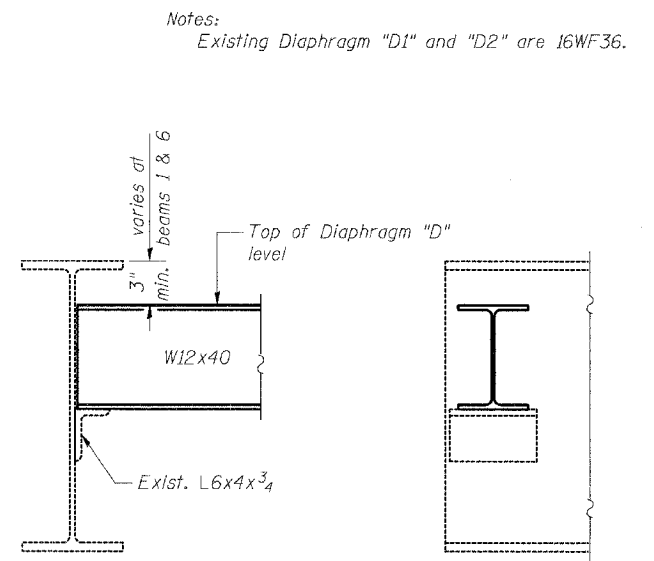
ROUTE NO.	SEC.	COUNTY	TOTAL SHEETS	SHEET NO.
FAS RTE 1588	*	ADAMS	38	15

FED. ROAD DIST. NO. 7 ILLINOIS PROJECT
 Location #1 Structure No. 001-3027
 * 05-00189-00-BR



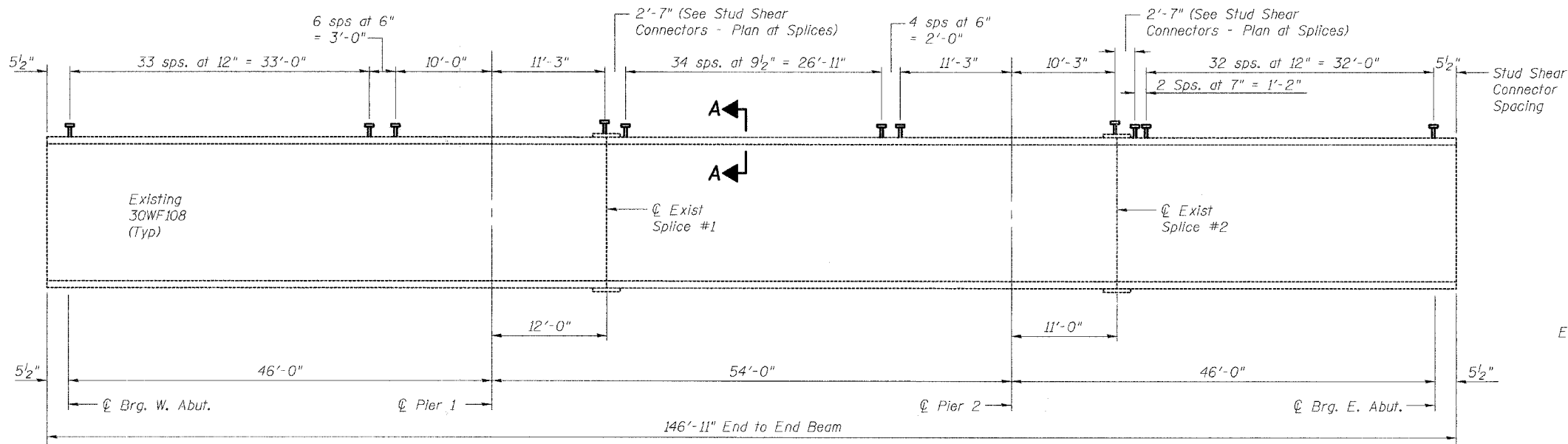
FRAMING PLAN

Note: All dimensions in the plan are measured horizontally



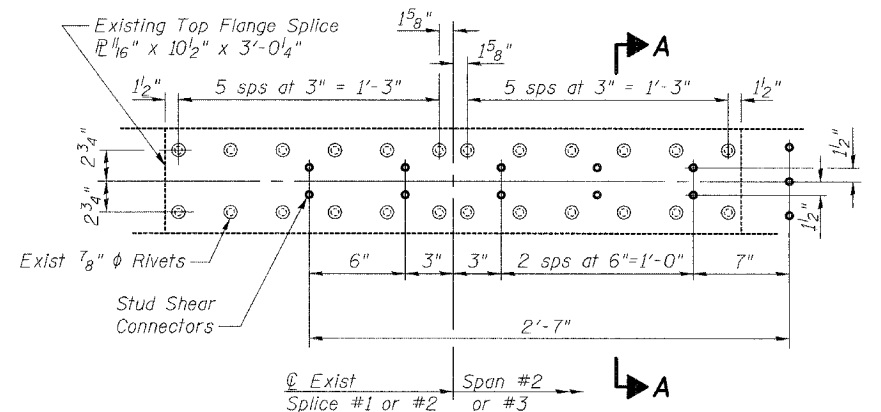
* End Diaphragms, D, to be removed and replaced in accordance with Article 109.04 of the Standard Specifications. End Diaphragms, D, will be fabricated by Adam's County.

END DIAPHRAGM, D

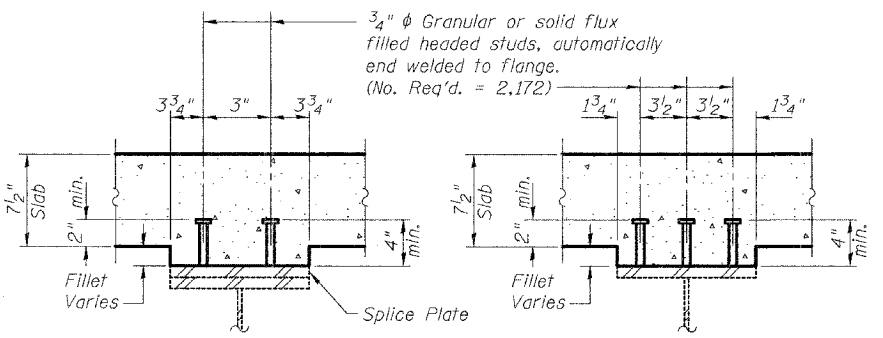


BEAM ELEVATION

Notes:
 Adjust stud shear connector spacing in field to miss posts of the Steel Bridge Rail (Special). See sheet #6 of 12.



STUD SHEAR CONNECTORS - PLAN AT SPLICES



SECTION A-A
 (OVER EXISTING SPLICE PLATES ONLY)

REV. NO.	DRAWN	CHKD.	APPD.	DESCRIPTION	DATE
	EAW				12/05
F.A.S. RTE. 1588 OVER CURL CREEK SECTION 05-00189-00-BR Project RS-1588 (106) ADAMS COUNTY STRUCTURAL STEEL DETAILS STRUCTURE NUMBER 001-3027 STATION 336+56					

9/4/3/30 AM
 1/25/2006
 P:\05Files\050013\Final Bridge Plans\001-3027-Bridge.dgn