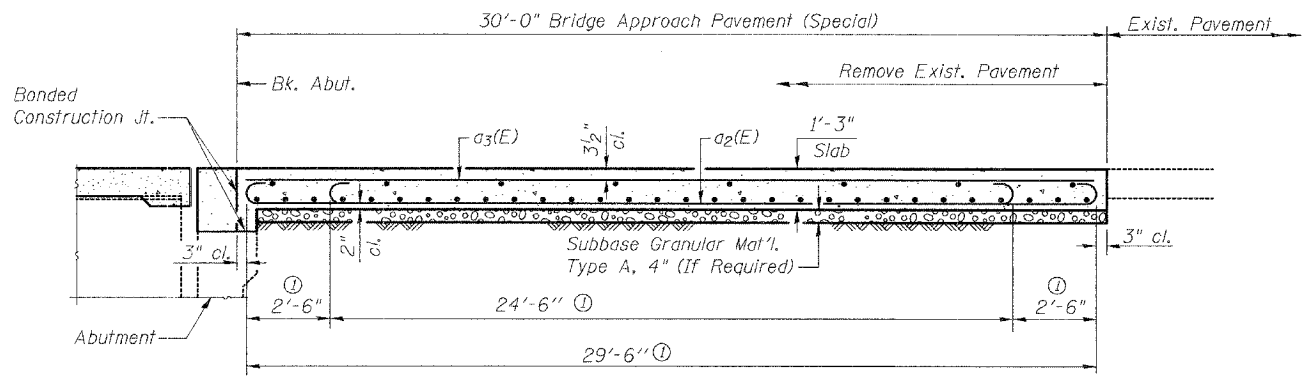
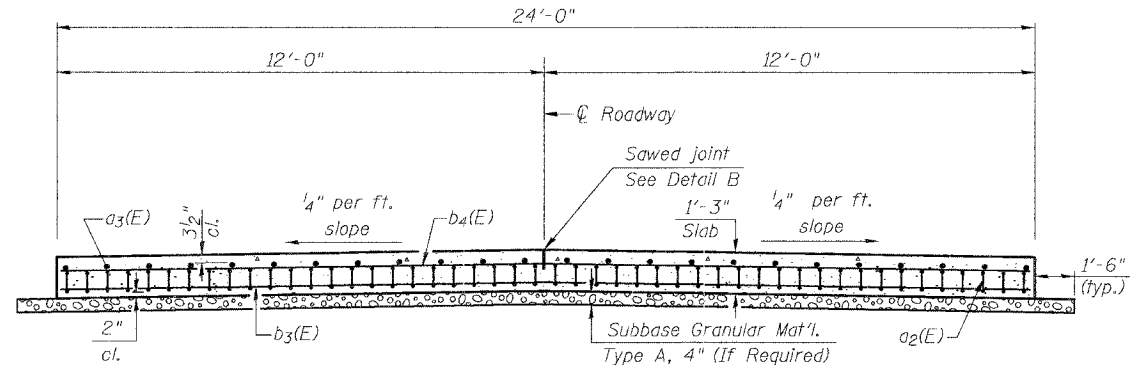


ROUTE NO.	SEC.	COUNTY	TOTAL SHEETS	SHEET NO.
FAS RTE 1588	*	ADAMS	38	20

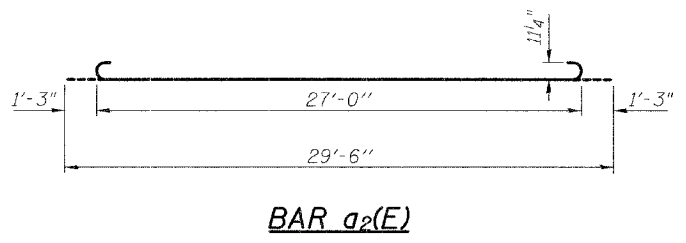
FED. ROAD DIST. NO. 7 ILLINOIS PROJECT
 Location #1 Structure No. 001-3027
 * 05-00189-00-BR



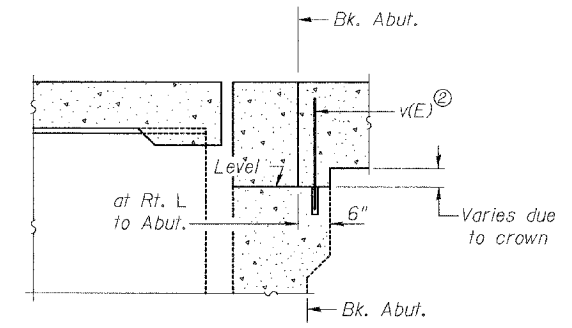
SECTION C-C
 ① Stagger a₂(E) bars as shown on plan - full width



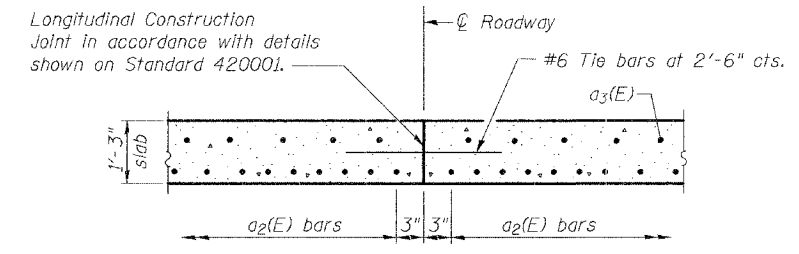
SECTION D-D
 (See Plan for Dimensions not shown)



BAR a₂(E)



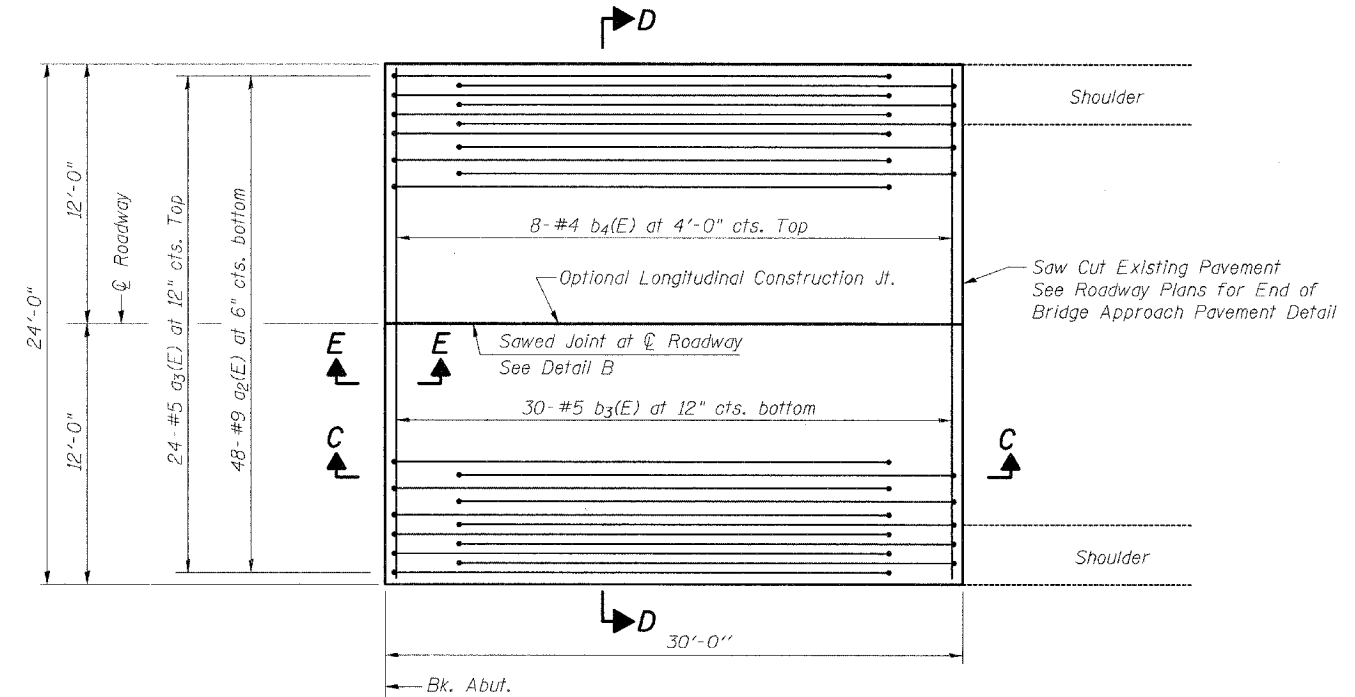
SECTION E-E
 ② v(E) bars are billed with the superstructure See Sheets #4 and #5 of 12.



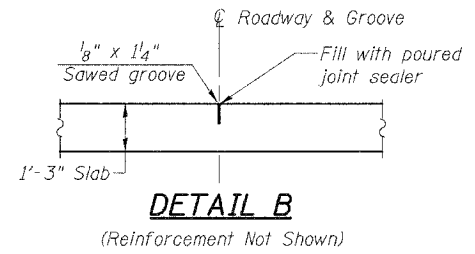
OPTIONAL LONGITUDINAL CONSTRUCTION JOINT

As approved by the Engineer, the Contractor may elect to reduce the width of pour by use of the Optional Longitudinal Construction Joint shown. Joints shall be located at C roadway.

Notes:
 Reinforcement bars designated (E) shall be epoxy coated.
 Cost of reinforcement bars, epoxy coated, concrete, sub-base granular material Type A, pavement removal, excavation to bottom of sub-base and optional longitudinal construction joint are included in the cost of "Bridge Approach Pavement (Special)".
 Provisions of Section 420 of Std. Specification shall apply.



PLAN
 (East Bridge Approach Pavement shown, West Bridge Approach Pavement the same, except opposite hand)



DETAIL B
 (Reinforcement Not Shown)

BRIDGE APPROACH PAVEMENT (SPECIAL)
BILL OF MATERIAL
 (For one approach)

Bar	No.	Size	Length	Shape
a ₂ (E)	48	#9	29'-6"	
a ₃ (E)	24	#5	29'-6"	
b ₃ (E)	30	#5	23'-6"	
b ₄ (E)	8	#4	23'-6"	
Reinforcement Bars, Epoxy Coated			POUND	6,410

DESIGN STRESSES
 f_y = 60,000 p.s.i.
 f'c = 3,500 p.s.i.

REV. NO.	DRAWN	CHKD.	APPD.	DESCRIPTION	DATE
F.A.S. RTE. 1588 OVER CURL CREEK SECTION 05-00189-00-BR Project RS-1588 (106) ADAMS COUNTY					
BRIDGE APPROACH PAVEMENT (SPECIAL) STRUCTURE NUMBER 001-3027 STATION 336+56					