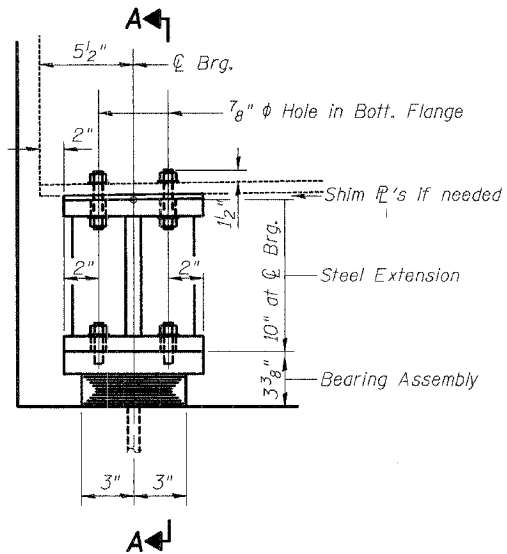
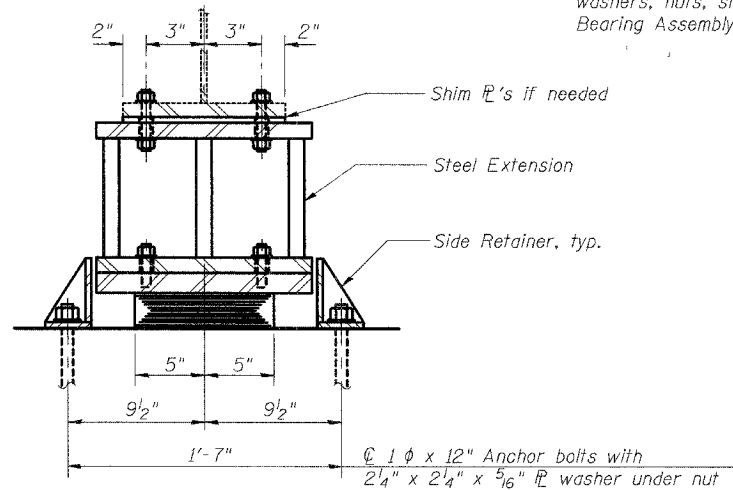


ROUTE NO.	SEC	COUNTY	TOTAL SHEETS	SHEET NO.
FAS RTE 1588	*	ADAMS	38	34
FED. ROAD DIST. NO. 7		ILLINOIS	PROJECT	
Location #2 Structure No. 001-3028				
* 05-00189-00-BR				

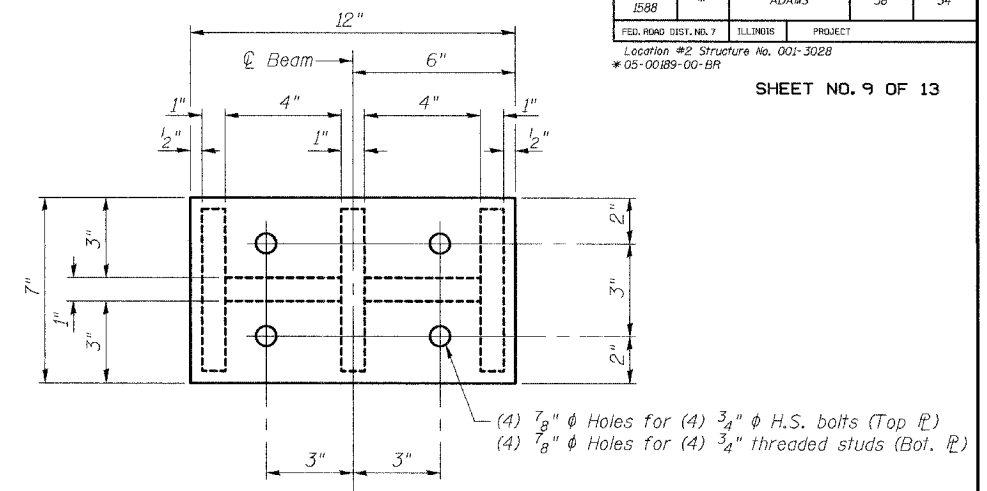
Notes:
See sheet #11 of 13 for Anchor Bolt installation.
Cost of steel extensions, side retainers, anchor bolts, washers, nuts, shims and plates are included in "Elastomeric Bearing Assembly Type I"



ELEVATION AT EAST ABUTMENT

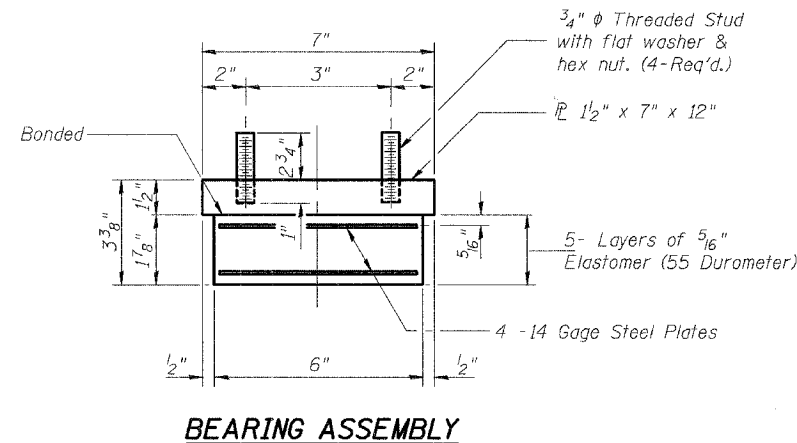


SECTION A-A



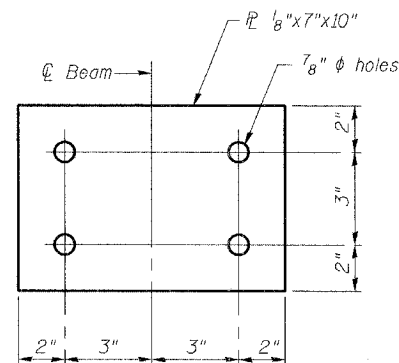
PLAN STEEL EXTENSION

TYPE I ELASTOMERIC EXPANSION BEARING

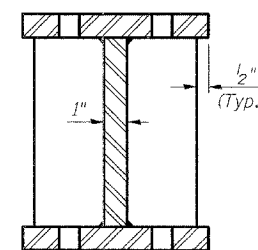


BEARING ASSEMBLY

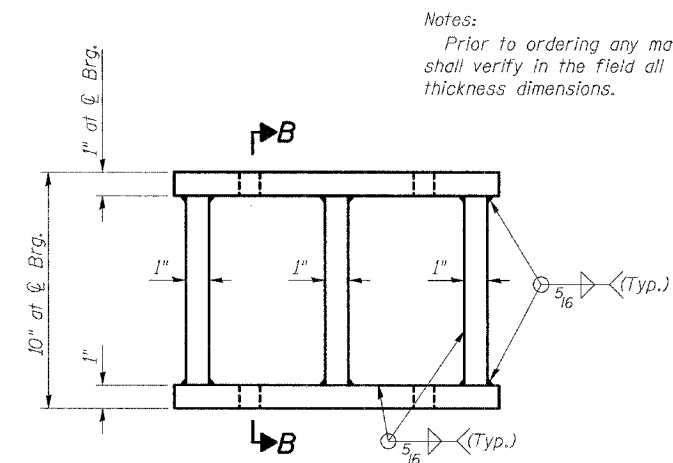
Note: Shim plates shall not be placed under Bearing Assembly.



SHIM P
(12 Required)

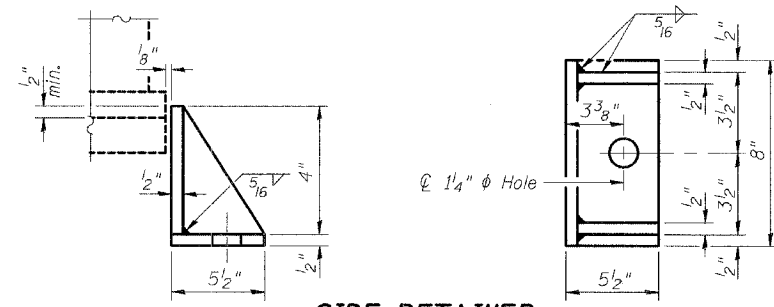


SECTION B-B



ELEVATION STEEL EXTENSION

Notes:
Prior to ordering any material, the Contractor shall verify in the field all bearing height and shim thickness dimensions.



SIDE RETAINER

Equivalent rolled angle with stiffeners will be allowed in lieu of welded plates.

BILL OF MATERIAL

Item	Unit	Total
Elastomeric Bearing Assembly Type I	EACH	6

CONTRACTOR IS RESPONSIBLE FOR INSTALLATION ONLY.
MATERIAL WILL BE FABRICATED AND FURNISHED BY ADAMS COUNTY.

REV. NO.	DRAWN	CHKD.	APPD.	DESCRIPTION	DATE
	BGJ				12/05
F.A.S. RTE. 1588 OVER WALNUT CREEK SECTION 05-00189-00-BR Project RS-1588 (106) ADAMS COUNTY					
TYPE I ELASTOMERIC BEARING STRUCTURE NUMBER 001-3028 STATION 407+65					

1/25/2006 9:17:09 AM p:\05files\050014\final\bridge\plans\001-3028-bridge.dgn