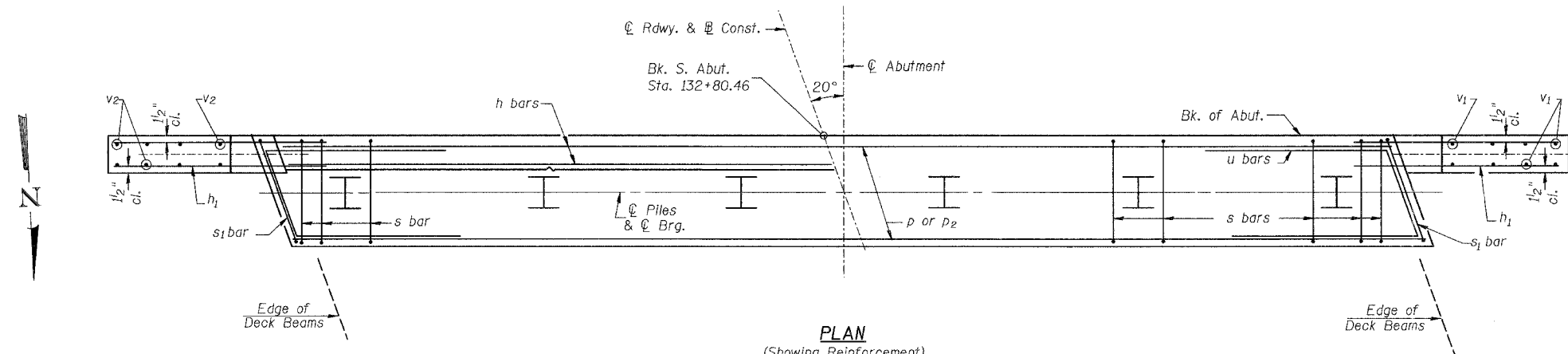
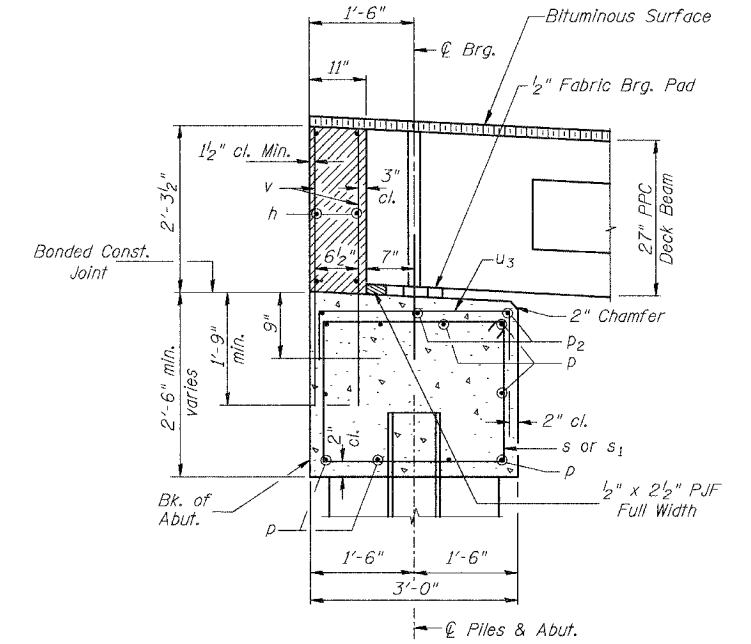


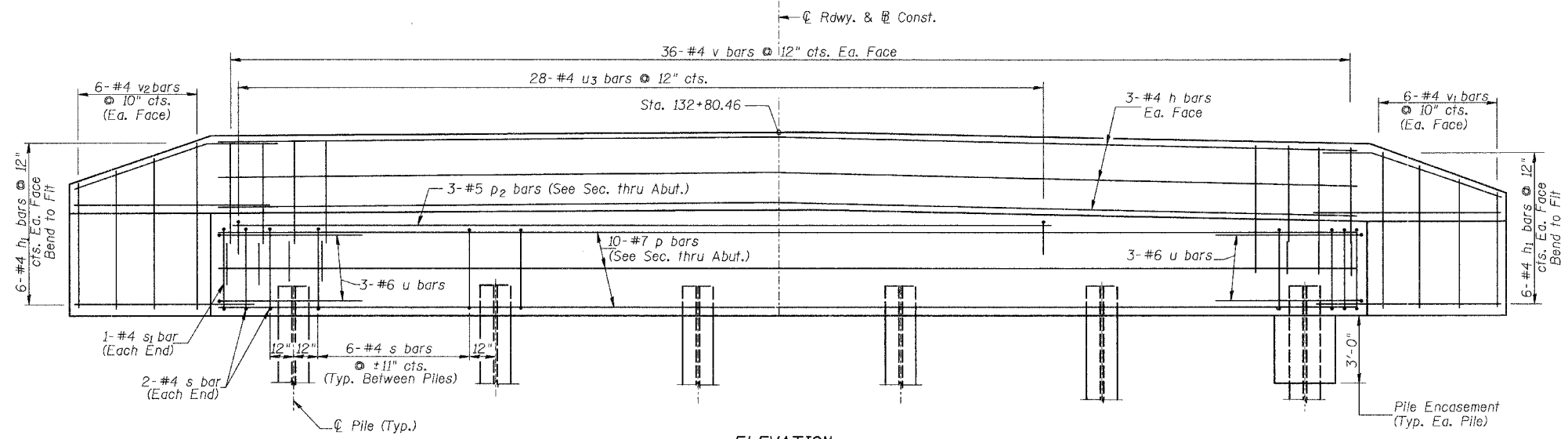
ROUTE NO.	SECTION	COUNTY	SHEETS	SHEET
CH 3	*	PIKE	17	13
FED. ROAD DIST. NO. 7		ILLINOIS	PROJECT BRS-60(171)	
*04-00079-00-BR				



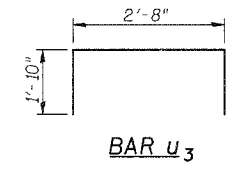
**PLAN**  
(Showing Reinforcement)



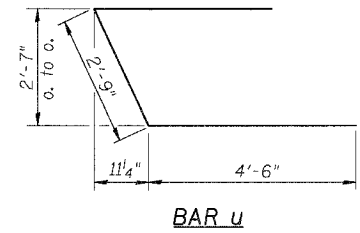
**SECTION THRU ABUT.**  
(At Right Angles)



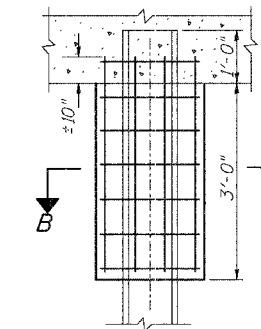
**ELEVATION**  
(Front View of Abutment Showing Reinforcement)



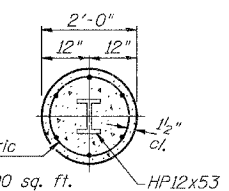
**BAR u3**



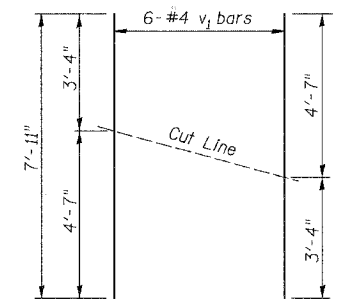
**BAR u**



**DETAIL OF HP PILE ENCASEMENT**

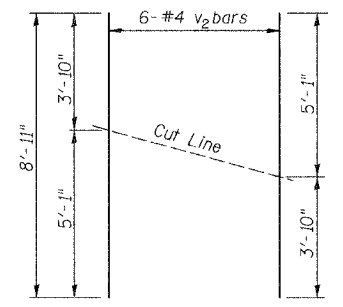


**SEC. B-B**



**BAR CUTTING DIAGRAM**

Order v1 bars full length. Cut as shown and use remainder of bars in opposite face.



**BAR CUTTING DIAGRAM**

Order v2 bars full length. Cut as shown and use remainder of bars in opposite face.

**NOTES**

1. The Backwall and the portion of the Wingwalls above the bonded construction joint shall be cast against the in-place beam.
2. Reinforcement bars shall conform to A.A.S.H.T.O. M-31 or M-322, Grade 60.

**DESIGN STRESSES**

f'c = 3,500 p.s.i.  
fy = 60,000 p.s.i.

**PILE DATA**

Type: Steel HP12x53  
Capacity: 40 Ton Driven to 60 Ton Bearing  
Est. Length: 64'  
No. Req'd: 6 (Includes 1 Test Pile)

**BILL OF MATERIAL**

BAR	NO.	SIZE	LENGTH	SHAPE
h	6	#4	35'-11"	—
h1	24	#4	6'-6"	—
p	10	#7	35'-11"	—
p2	3	#5	27'-0"	—
s	34	#4	10'-5"	□
s1	2	#4	10'-9"	□
u	6	#6	11'-9"	—
u3	28	#4	6'-4"	—
v	72	#4	4'-0"	—
v1	6	#4	7'-11"	—
v2	6	#4	8'-11"	—
Concrete Structures		CU YD	16.1	
Reinforcement Bars		POUND	1,800	
Structure Excavation		CU YD	50	
Name Plates		EACH	1	
Furnishing Steel Piles HP12x53		FOOT	320	
Driving Steel Piles		FOOT	320	
Test Pile Steel HP12x53		EACH	1	
Concrete Encasement		CU YD	2.1	

See Special Provisions

**SOUTH ABUTMENT DETAILS**  
**C.H. 3 OVER BAY CREEK**  
**SEC. 04-00079-00-BR**  
**PIKE COUNTY**  
**STATION 133+69.88**