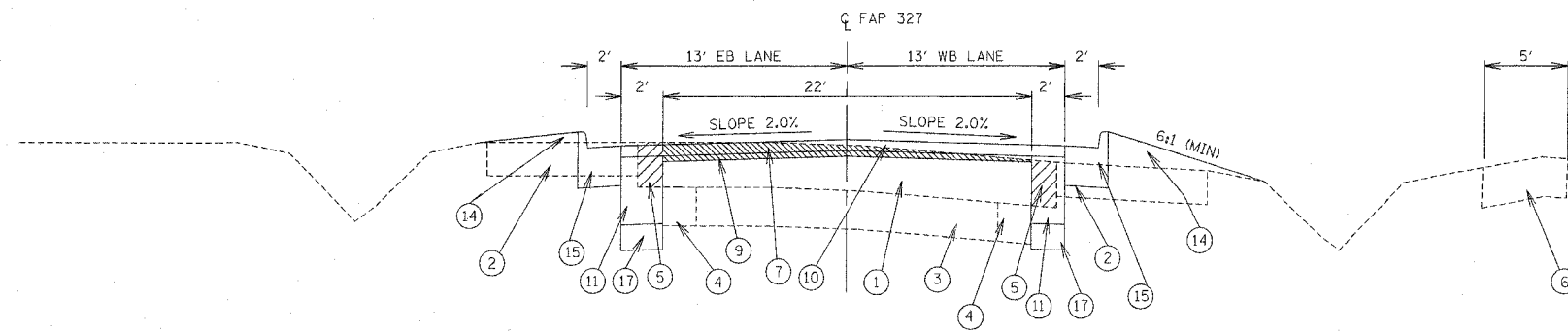
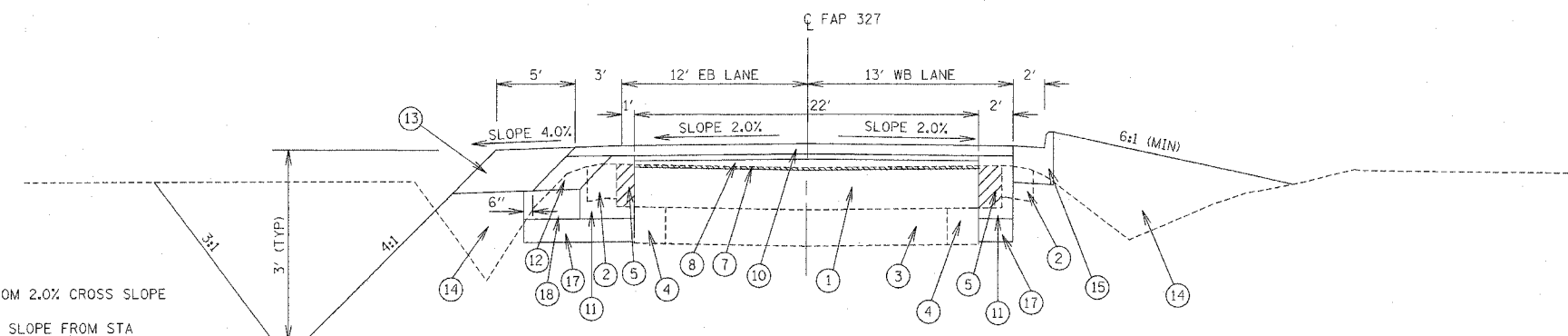


F.A.P. RTE.	SECTION	COUNTY	TOTAL SHEETS	SHEET NO.
327	182 & 187, RS 282	MARION	222	14
STA.	467+94.98	TO STA.	538+50.03	
IDOT DIST. NO. 7	ILLINOIS	FED. AID PROJECT		
CONTRACT NO. 94700				



TYPICAL SECTION

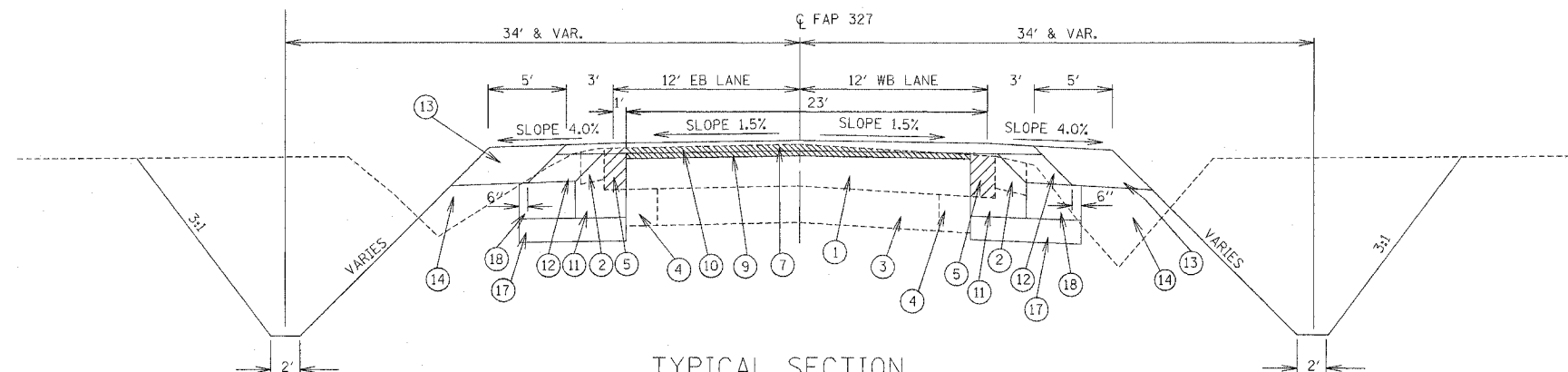
FROM STATION 467+94.98
TO STATION 503+06.98



TYPICAL SECTION

FROM STATION 503+06.98
TO STATION 513+82.61

NOTE: TRANSITION FROM 2.0% CROSS SLOPE
TO 1.5% CROSS SLOPE FROM STA
513+82.61 TO STA 514+32.61



TYPICAL SECTION

FROM STATION 513+82.61
TO STATION 538+50.03

- ① EXISTING PAVEMENT
- ② EXISTING AGGREGATE SHOULDER-TO BE REMOVED
- ③ ORIGINAL CONCRETE ROADWAY
- ④ EXISTING 2' CONCRETE WIDENING
- ⑤ EXISTING ASPHALT SHOULDER- REMOVE 11' FROM EXISTING CENTERLINE
- ⑥ EXISTING SIDEWALK
- ⑦ BITUMINOUS SURFACE REMOVAL (VARIABLE DEPTH)
- ⑧ BITUMINOUS CONCRETE BINDER COURSE, SUPERPAVE IL-19.0, N70- DEPTH VARIES
- ⑨ LEVELING BINDER (MACHINE METHOD), SUPERPAVE N90, (MINIMUM 1" & VARIES)
- ⑩ BITUMINOUS CONCRETE SURFACE COURSE SUPERPAVE MIXTURE D, N90 1.50"
- ⑪ BITUMINOUS CONCRETE BASE COURSE WIDENING, SUPERPAVE, 12"
- ⑫ BITUMINOUS SHOULDER, 6 1/2"
- ⑬ AGGREGATE SHOULDER, TYPE B, 8"
- ⑭ EARTH FILL
- ⑮ COMBINATION CONCRETE CURB AND GUTTER, TYPE B6.24
- ⑯ EXISTING CONCRETE CURB AND GUTTER
- ⑰ SUB-BASE GRANULAR MATERIAL, TYPE B, 12"
- ⑱ SUB-BASE GRANULAR MATERIAL, TYPE C
- ⑲ BITUMINOUS CONCRETE BASE COURSE SUPERPAVE, 12"

STRUCTURAL DESIGN INFORMATION

STRUCTURAL DESIGN TRAFFIC: YEAR 2015 ADT = 8134
 PV = 85.5% SU = 6.6% MU = 7.8%
 ROAD / STREET CLASSIFICATION: CLASS II
 PERCENT STRUCTURAL DESIGN TRAFFIC IN DESIGN LANE
 PV = 0.5 SU = 0.5 MU = 0.5
 MINIMUM SOIL SUPPORT: IBR = 2
 MINIMUM TRAFFIC FACTOR = 3.81

REVISIONS	
NAME	DATE

ILLINOIS DEPARTMENT OF TRANSPORTATION
TYPICAL SECTIONS
U.S. ROUTE 50
 SCALE: VERT. DRAWN BY ALM
 HORIZ. DATE 6/27/03 CHECKED BY MJM

REVISED 12/20/05