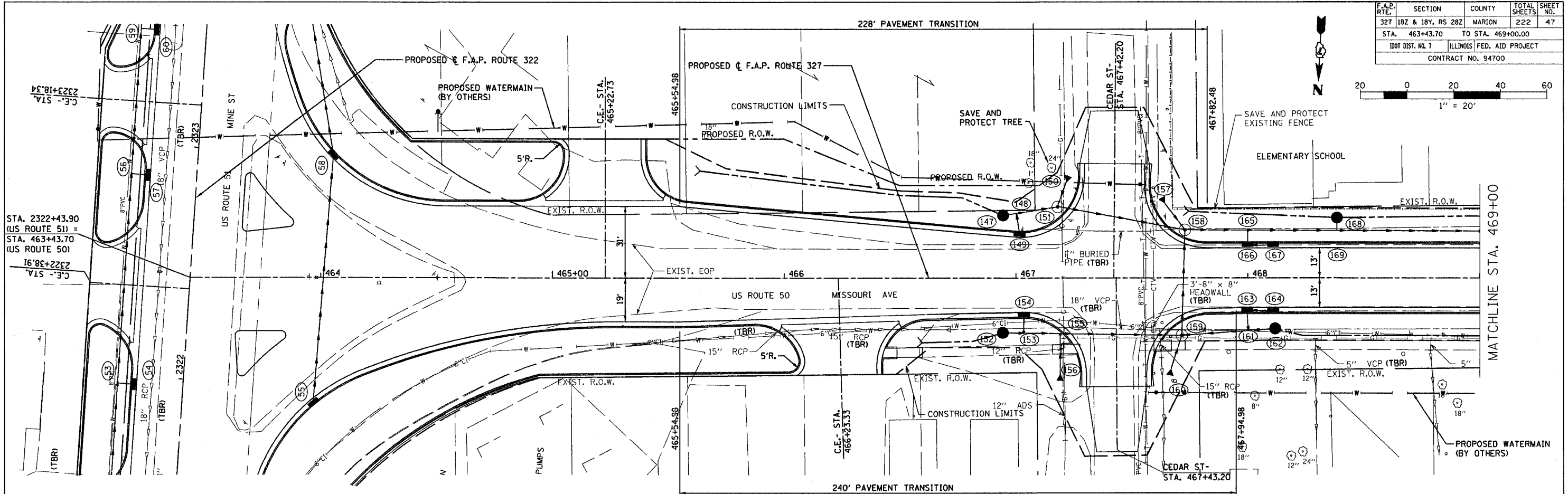
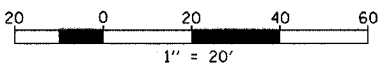


F.A.P. RTE.	SECTION	COUNTY	TOTAL SHEETS	SHEET NO.
327	1B2 & 1B1, RS 2B2	MARION	222	47
STA. 463+43.70		TO STA. 469+00.00		
IDOT DIST. NO. 7		ILLINOIS FED. AID PROJECT		
CONTRACT NO. 94700				



DATE	BY	DESCRIPTION

DATE	BY	DESCRIPTION

