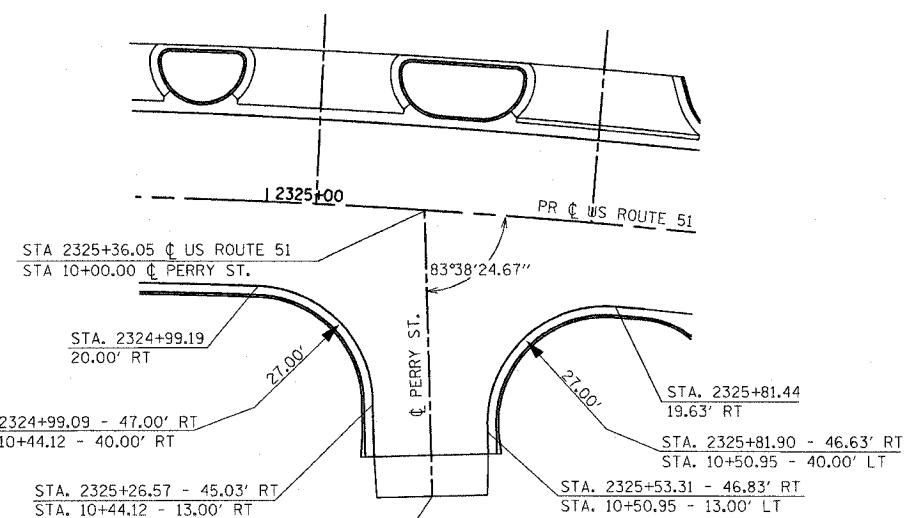


F.A.P. RTE.	SECTION	COUNTY	TOTAL SHEETS	SHEET NO.
322	18Z & 18Y, RS 28Z	MARION	222	79
STA.		TO STA.		
BOT DIST. NO. 7		ILLINOIS FED. AID PROJECT		
CONTRACT NO. 94700				

N.E. QUADRANT				
STATIONING ALONG U.S. RTE. 51	OFFSET TO EOP FEET	EOP ELEV FEET	DISTANCE ALONG RAD. FEET	
LT. 2328+33.25	15.58	510.62		
LT. 2328+43.11	17.16	510.44	10.00	
LT. 2328+51.67	22.32	510.26	20.00	
LT. 2328+57.78	30.24	510.08	30.00	
LT. 2328+60.58	39.84	509.90	40.00	
LT. 2328+60.00	49.83	509.72	50.00	
LT. 2328+60.00	50.38	509.69	50.56	

S.E. QUADRANT				
STATIONING ALONG U.S. RTE. 51	OFFSET TO EOP FEET	EOP ELEV FEET	DISTANCE ALONG RAD. FEET	
LT. 2329+13.88	14.11	510.61		
LT. 2329+04.08	16.13	510.44	10.00	
LT. 2328+95.70	21.57	510.27	20.00	
LT. 2328+89.86	29.70	510.10	30.00	
LT. 2328+87.86	39.78	509.93	40.00	
LT. 2328+86.27	49.32	509.76	50.00	
LT. 2328+85.85	53.21	509.69	53.92	

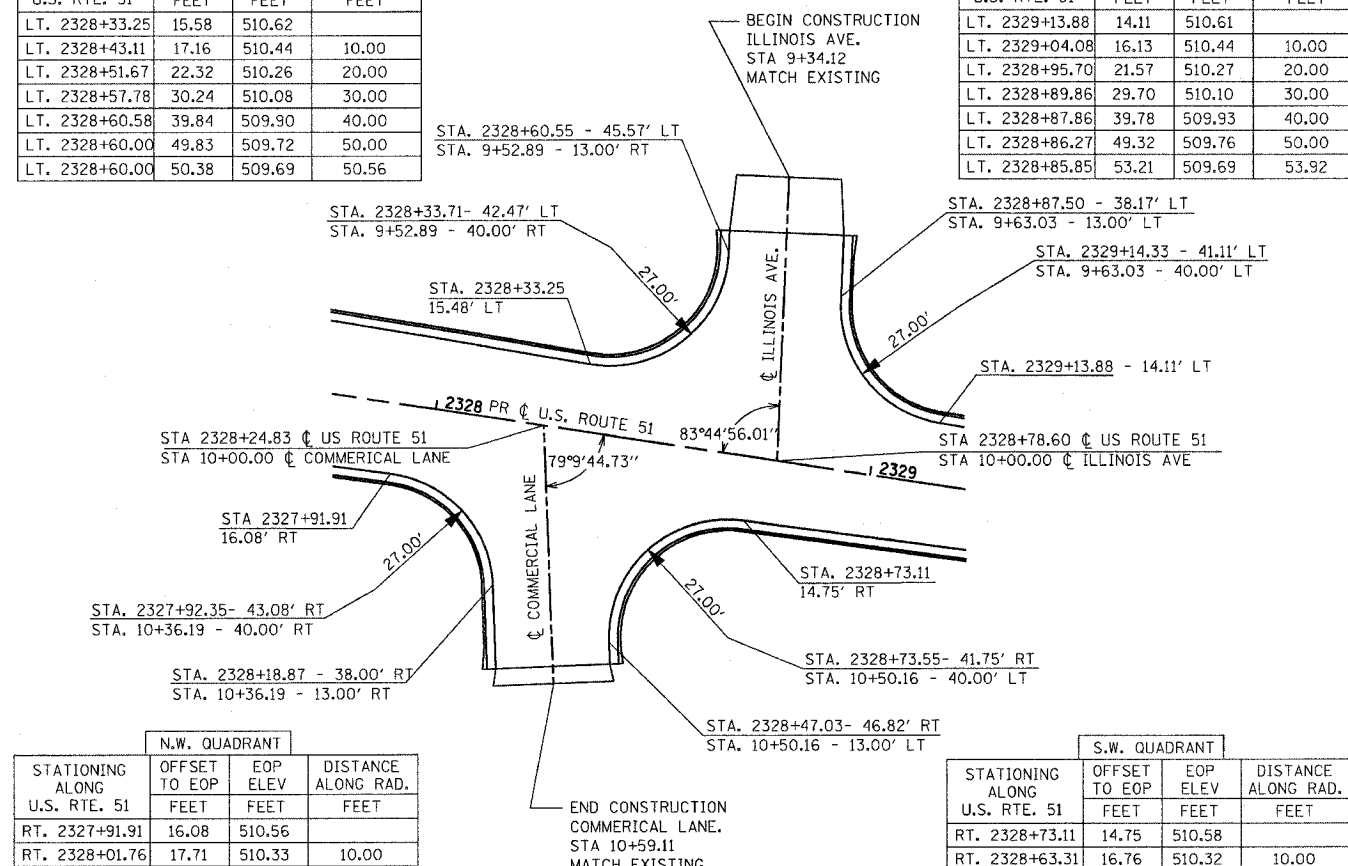


N.W. QUADRANT				
STATIONING ALONG U.S. RTE. 51	OFFSET TO EOP FEET	EOP ELEV FEET	DISTANCE ALONG RAD. FEET	
RT. 2324+99.09	20.00	509.62		
RT. 2325+09.01	21.83	509.52	10.00	
RT. 2325+17.62	27.08	509.42	20.00	
RT. 2325+23.74	35.05	509.32	30.00	
RT. 2325+26.54	44.66	509.22	40.00	
RT. 2325+27.35	54.63	509.12	50.00	
RT. 2325+27.54	56.85	509.11	52.22	

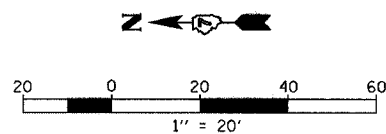
S.W. QUADRANT				
STATIONING ALONG U.S. RTE. 51	OFFSET TO EOP FEET	EOP ELEV FEET	DISTANCE ALONG RAD. FEET	
RT. 2325+81.44	19.63	509.87		
RT. 2325+71.55	21.63	509.72	10.00	
RT. 2325+63.03	27.02	509.57	20.00	
RT. 2325+56.43	35.04	509.42	30.00	
RT. 2325+53.63	44.66	509.27	40.00	
RT. 2325+54.09	54.63	509.11	49.99	

N.W. QUADRANT				
STATIONING ALONG U.S. RTE. 51	OFFSET TO EOP FEET	EOP ELEV FEET	DISTANCE ALONG RAD. FEET	
RT. 2327+91.91	16.08	510.56		
RT. 2328+01.76	17.71	510.33	10.00	
RT. 2328+10.33	22.93	510.10	20.00	
RT. 2328+16.43	30.86	509.87	30.00	
RT. 2328+19.33	40.43	509.64	40.00	
RT. 2328+21.21	50.25	509.41	50.00	
RT. 2328+22.43	56.62	509.24	56.49	

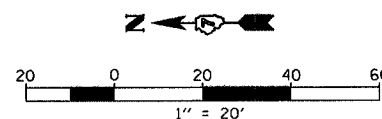
S.W. QUADRANT				
STATIONING ALONG U.S. RTE. 51	OFFSET TO EOP FEET	EOP ELEV FEET	DISTANCE ALONG RAD. FEET	
RT. 2328+73.11	14.75	510.58		
RT. 2328+63.31	16.76	510.32	10.00	
RT. 2328+54.92	22.20	510.06	20.00	
RT. 2328+49.08	30.32	509.80	30.00	
RT. 2328+46.60	40.01	509.54	40.00	
RT. 2328+47.68	51.21	509.28	51.55	
RT. 2328+47.97	51.73	509.24	51.81	



U.S. ROUTE 51/ PERRY ST.



U.S. ROUTE 51/ ILLINOIS AVE. & COMMERCIAL LN.



REVISIONS	
NAME	DATE

ILLINOIS DEPARTMENT OF TRANSPORTATION
**INTERSECTION WARPING/
 GEOMETRIC LAYOUT
 U.S. ROUTE 51**
 SCALE: VERT. 1"=20'
 HORIZ. 1"=20'
 DATE 6/27/03
 DRAWN BY MEC
 CHECKED BY MJM