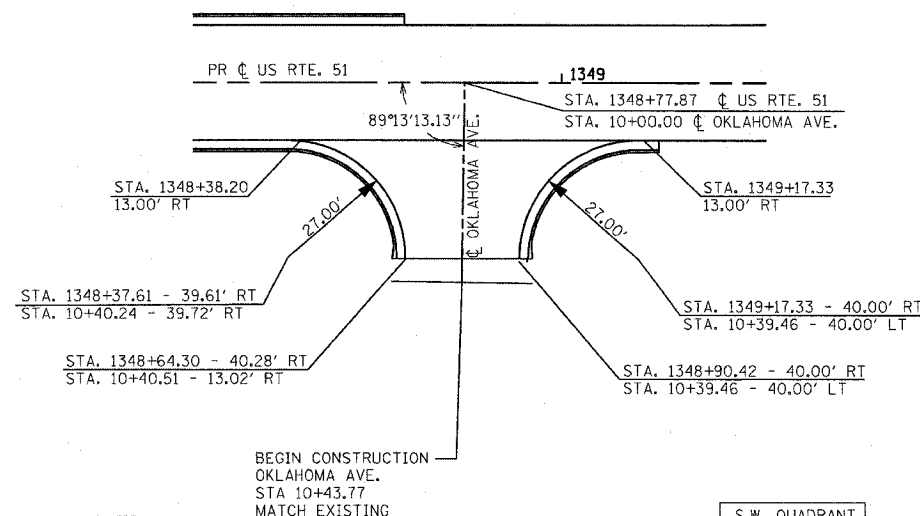


F.A.E. SHEETS NO.	SECTION	COUNTY	TOTAL SHEETS	SHEET NO.
322 327	1B2 & 1B7, RS 2B2	MARION	222	82
STA.	TO STA.			
DOT DIST. NO. 7	ILLINOIS FED. AID PROJECT			
CONTRACT NO. 94700				

S.E. QUADRANT			
STATIONING ALONG U.S. RTE. 50	OFFSET TO EOP FEET	EOP ELEV FEET	DISTANCE ALONG RAD. FEET
LT. 467+00.23	17.73	509.53	
LT. 467+10.18	18.74	509.59	10.00
LT. 467+19.07	23.31	509.64	20.00
LT. 467+25.70	30.80	509.70	30.00
LT. 467+29.15	40.18	509.75	40.00
LT. 467+29.55	49.43	509.48	49.26

S.W. QUADRANT			
STATIONING ALONG U.S. RTE. 50	OFFSET TO EOP FEET	EOP ELEV FEET	DISTANCE ALONG RAD. FEET
LT. 467+82.28	13.08	509.43	
LT. 467+72.47	15.00	509.50	10.00
LT. 467+64.03	20.37	509.58	20.00
LT. 467+58.12	28.43	509.65	30.00
LT. 467+55.56	38.10	509.73	40.00
LT. 467+55.54	48.10	509.78	50.00
LT. 467+55.55	49.24	509.48	51.14

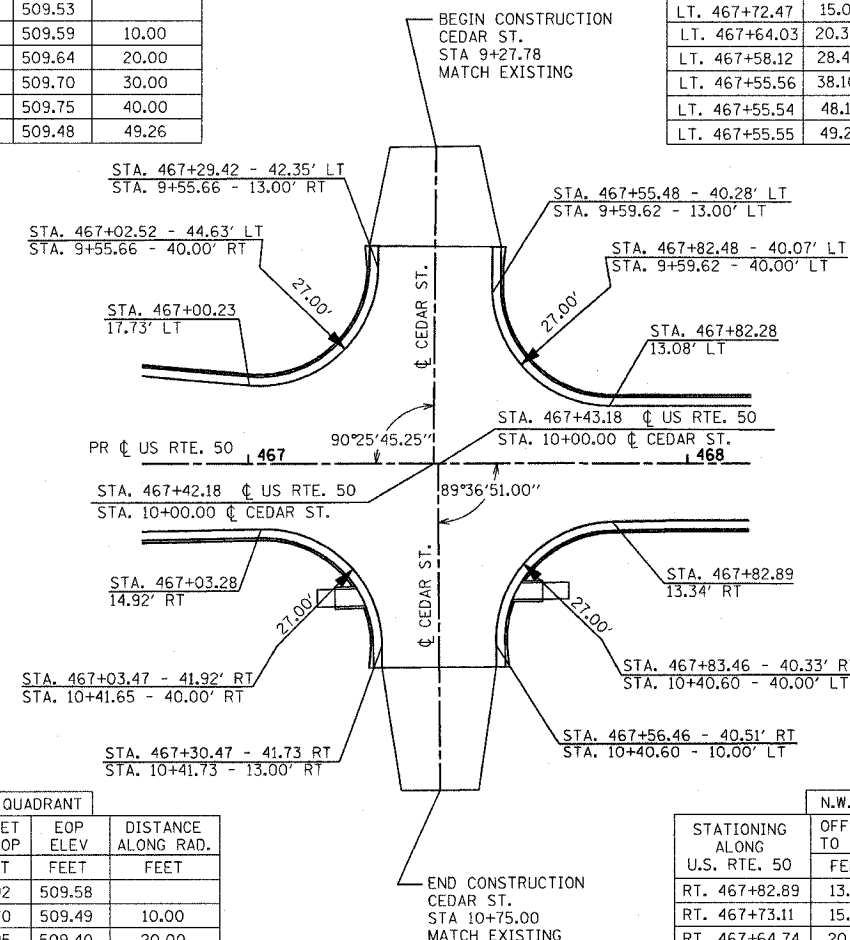


N.W. QUADRANT			
STATIONING ALONG U.S. RTE. 51	OFFSET TO EOP FEET	EOP ELEV FEET	DISTANCE ALONG RAD. FEET
RT. 1348+38.20	13.00	502.75	
RT. 1348+47.98	15.09	502.49	10.00
RT. 1348+56.30	20.63	502.22	20.00
RT. 1348+62.00	28.85	501.96	30.00
RT. 1348+64.29	38.58	501.43	40.00
RT. 1348+64.22	45.29	501.51	46.71

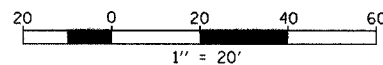
S.W. QUADRANT			
STATIONING ALONG U.S. RTE. 51	OFFSET TO EOP FEET	EOP ELEV FEET	DISTANCE ALONG RAD. FEET
RT. 1349+17.33	13.00	501.94	
RT. 1349+07.51	14.85	502.10	10.00
RT. 1348+99.03	20.15	502.25	20.00
RT. 1348+93.06	28.18	502.20	30.00
RT. 1348+90.42	37.82	501.76	40.00
RT. 1348+90.25	45.71	501.51	47.89

N.E. QUADRANT			
STATIONING ALONG U.S. RTE. 50	OFFSET TO EOP FEET	EOP ELEV FEET	DISTANCE ALONG RAD. FEET
RT. 467+03.28	14.92	509.58	
RT. 467+13.12	16.70	509.49	10.00
RT. 467+21.64	21.95	509.40	20.00
RT. 467+27.66	29.93	509.31	30.00
RT. 467+30.36	39.56	509.22	40.00
RT. 467+30.50	46.81	509.15	47.26

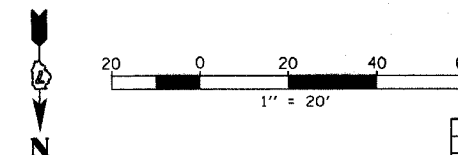
N.W. QUADRANT			
STATIONING ALONG U.S. RTE. 50	OFFSET TO EOP FEET	EOP ELEV FEET	DISTANCE ALONG RAD. FEET
RT. 467+82.89	13.34	509.42	
RT. 467+73.11	15.39	509.36	10.00
RT. 467+64.74	20.87	509.31	20.00
RT. 467+58.94	29.02	509.25	30.00
RT. 467+56.51	38.71	509.20	40.00
RT. 467+56.50	46.64	509.15	47.93



U.S. ROUTE 51 / OKLAHOMA AVE.



U.S. ROUTE 50 / CEDAR ST.



REVISIONS	
NAME	DATE

ILLINOIS DEPARTMENT OF TRANSPORTATION
INTERSECTION WARPING / GEOMETRIC LAYOUT
U.S. ROUTE 50 & 51
 SCALE: VERT. 1" = 20'
 HORIZ. 1" = 20'
 DATE 6/27/03
 DRAWN BY MEC
 CHECKED BY MJM