

ROUTE	SECTION	COUNTY	TOTAL SHEETS	SHEET NO.
322	182 & 184, RS 282	MARION	222	112
327				
FED. ROAD DIST. NO. 7		ILLINOIS	FED. AID PROJECT NO.	
CONTRACT NO. 94700				

- NOTES:**
1. CONCRETE CRADLES OR CONCRETE COVERS ARE TO BE PROVIDED AT LOCATIONS AS DESIGNATED BY THE ENGINEER WHERE THE PROPOSED STORM SEWER CROSSES EXISTING SANITARY SEWER, TELEPHONE CONDUIT, GAS, AND WATER LINES.
 2. THE COST OF THE CONCRETE CRADLES OR CONCRETE COVERS SHALL BE PAID FOR AT THE CONTRACT UNIT PRICE PER CUBIC YARD FOR CLASS SI CONCRETE, (MISCELLANEOUS)
 3. THE CONCRETE CRADLES OR CONCRETE COVERS ARE TO BE CONSTRUCTED PRIOR TO TRENCHING FOR THE PROPOSED STORM SEWER.
 4. WOOD OR METAL FORMS WILL NOT BE REQUIRED.
 5. SEE SPECIAL PROVISIONS.

GENERAL NOTES

"t"=THICKNESS OF THE EXISTING PAVEMENT (WHICH INCLUDES THE SUB-BASE IF APPLICABLE).

THE TOTAL WIDTH OF EXCAVATION FOR THE 6" P.V.C. PIPE SHALL BE 6" MINIMUM TO 10" MAXIMUM.

BACKFILL WITH SELECT MATERIAL AS SELECTED BY THE ENGINEER.

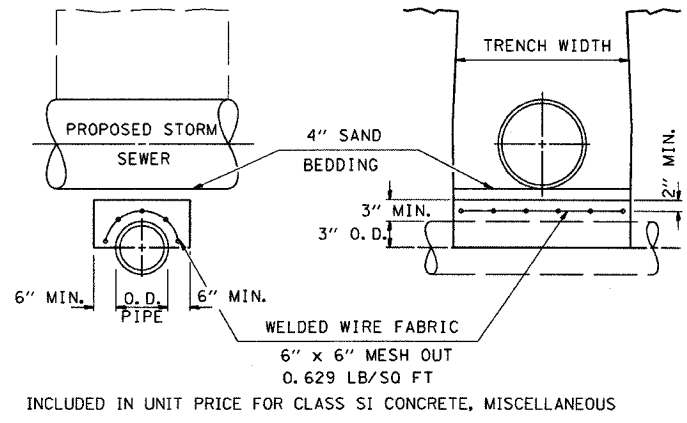
TO PREVENT DAMAGE TO THE TOP OF THE 5/8" Ø RE-BAR, AN APPROVED RE-BAR DRIVER SHALL BE USED.

CLASS SI CONCRETE SHALL BE USED THROUGHOUT.

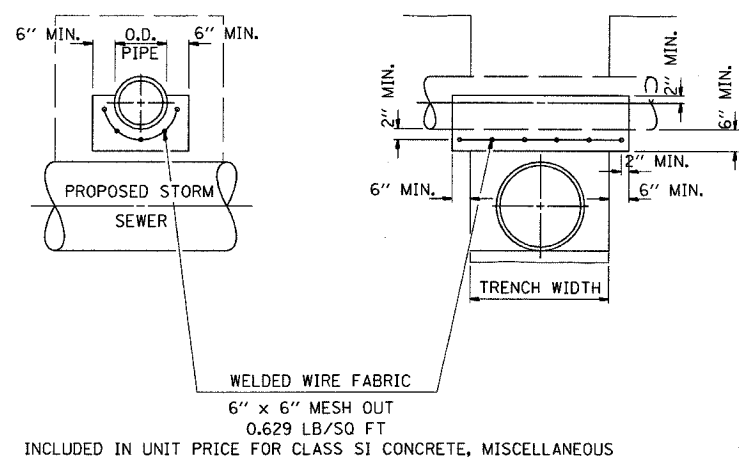
SEE SPECIAL PROVISIONS.

BILL OF MATERIALS

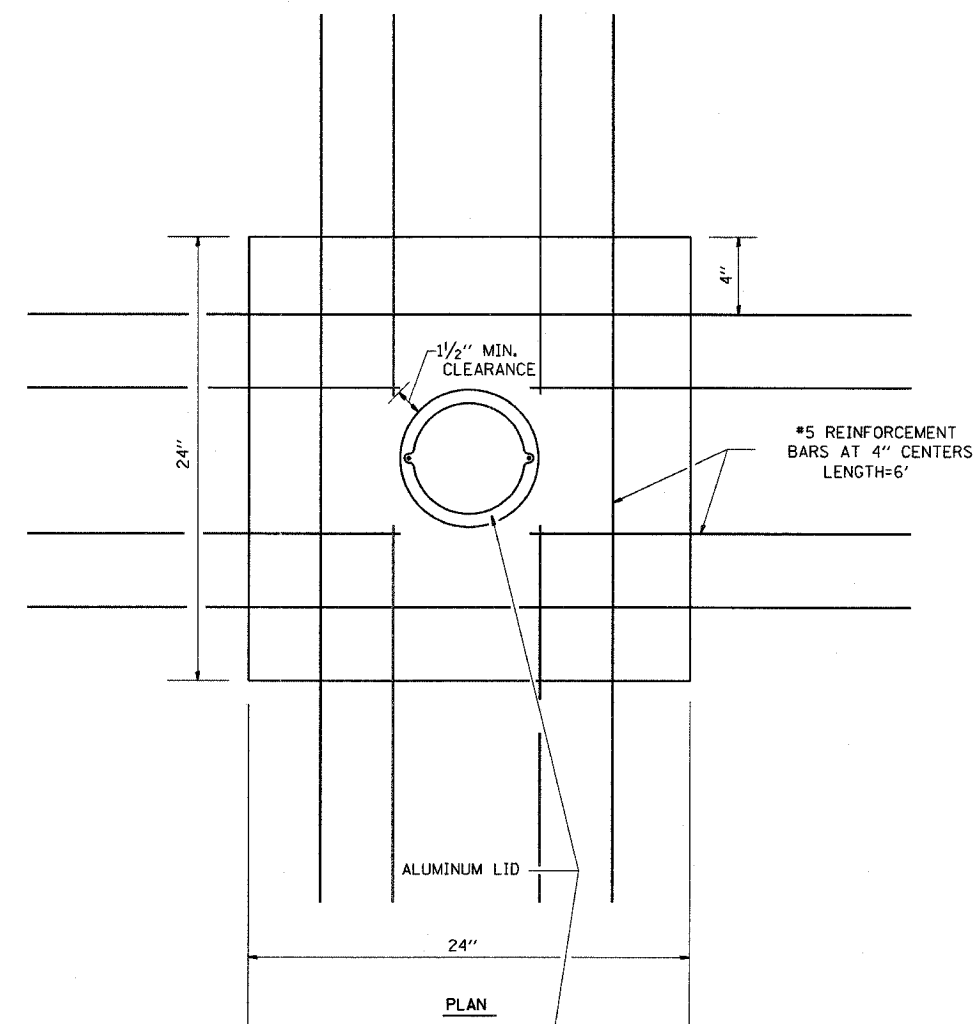
ALUMINUM LID; BERNTSEN; MODEL BMAC-6
 ALUMINUM TABLET; BERNTSEN; MODEL #RBD-35W/MAGNET W/O "X" (LOGO #2022)
 6" Ø P.V.C. PIPE, SCHEDULE 40
 #5 Ø x 36" MM RE-BAR
 CLASS SI CONCRETE, MISCELLANEOUS



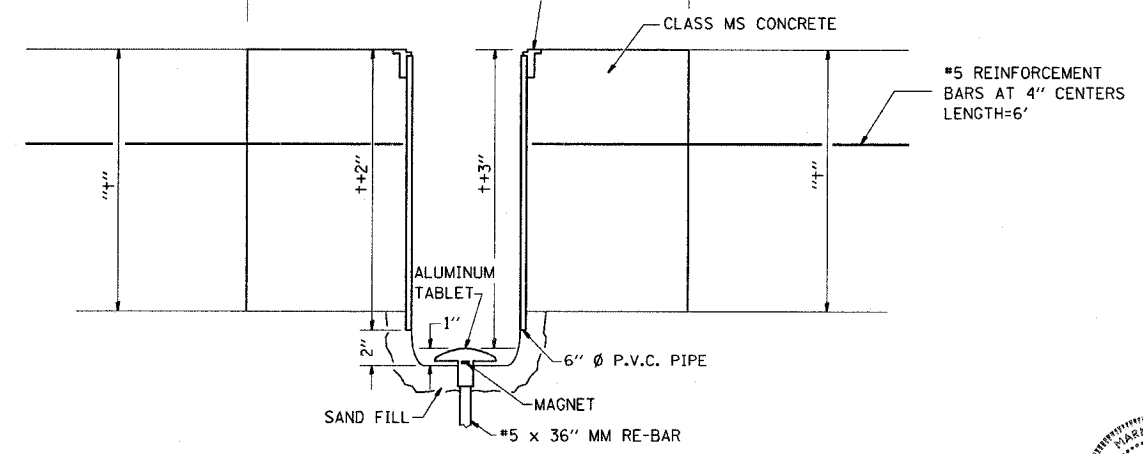
DETAIL OF CONCRETE COVER FOR EXISTING SANITARY SEWERS, TELEPHONE CONDUIT, WATER LINES, & GAS LINES



DETAIL OF CONCRETE CRADLE FOR EXISTING SANITARY SEWERS, TELEPHONE CONDUIT, WATER LINES, & GAS LINES

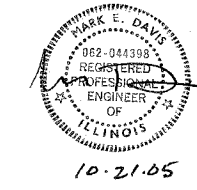


PLAN



ELEVATION

DETAIL OF SECTION CORNER MONUMENT



REVISIONS	
NAME	DATE
MMO	12-99

ILLINOIS DEPARTMENT OF TRANSPORTATION

TYPICAL DETAIL SECTION
 CORNER MONUMENT &
 CONCRETE UTILITY CRADLE

SCALE: VERT. 1"=1'-0"
 HORIZ. 1"=10'-0"

ISSUED: 05-03-96

DRAWN BY _____
 CHECKED BY _____

1 2 3 4 5 6 7 8 9
 10 11 12 13 14 15 16 17 18
 19 20 21 22 23 24 25 26 27
 28 29 30 31 32 33 34 35 36
 37 38 39 40 41 42 43 44 45
 46 47 48 49 50 51 52 53 54
 55 56 57 58 59 60 61 62 63

DCN-SPEC
 DATE