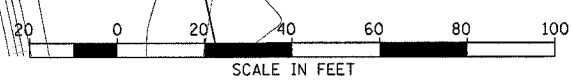
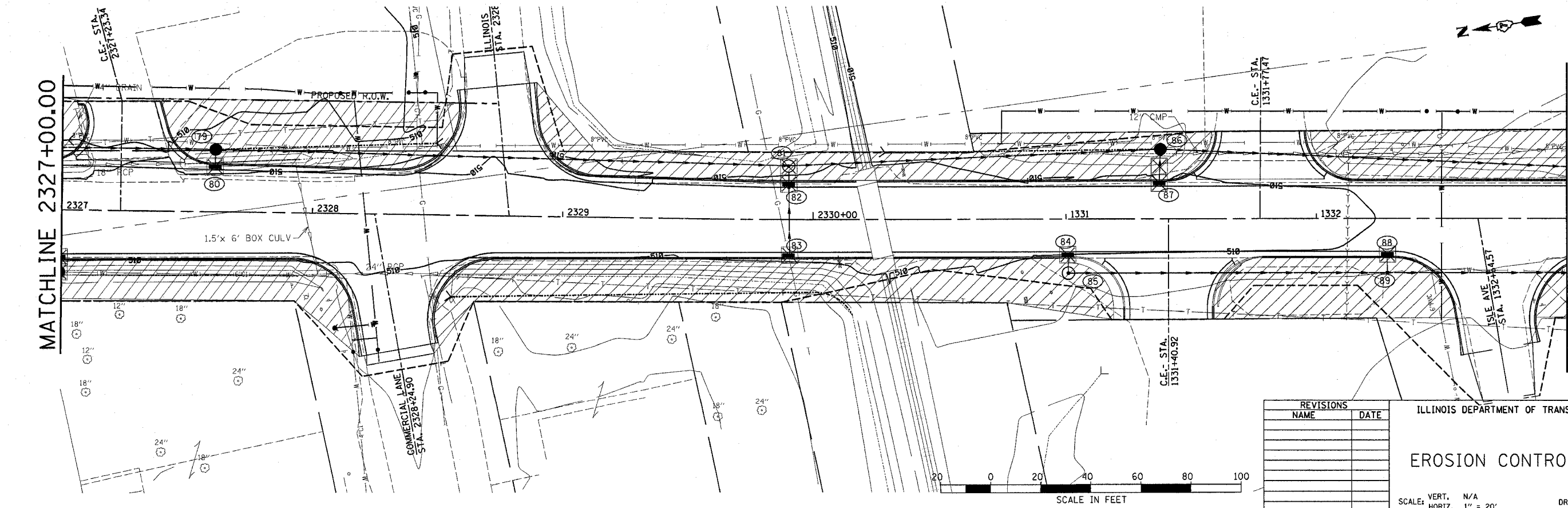
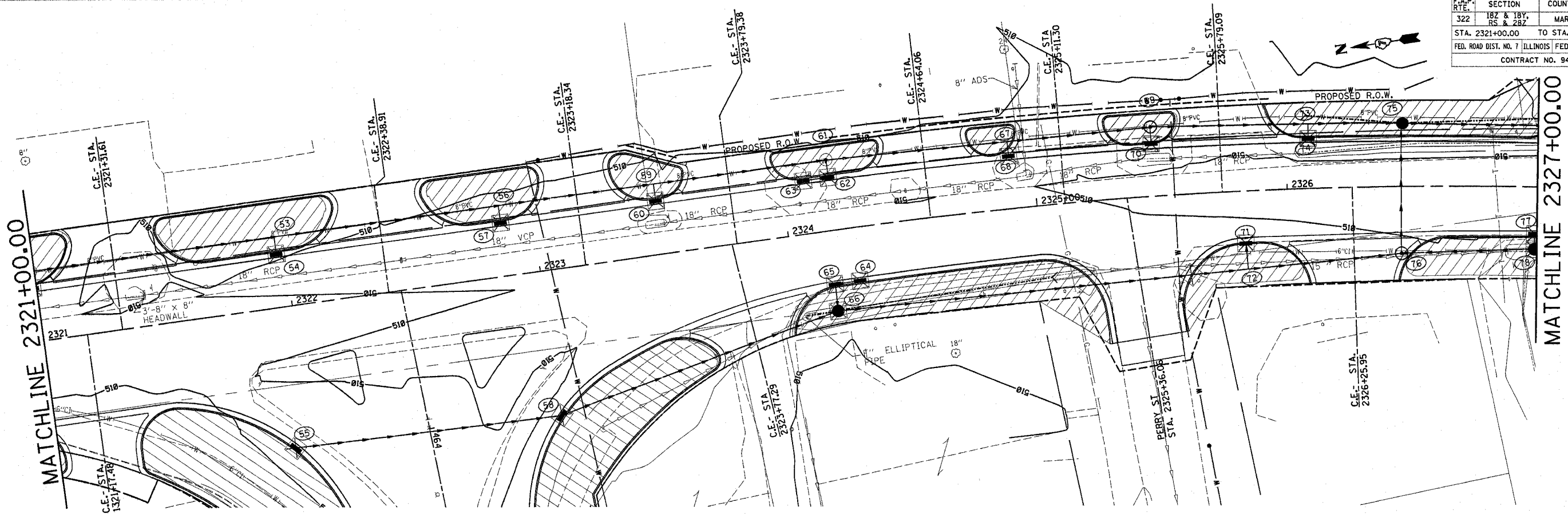


F.A.P. RTE.	SECTION	COUNTY	TOTAL SHEETS	SHEET NO.
322	187 & 189, RS & 287	MARION	222	116
STA. 2321+00.00 TO STA. 1333+00.00				
FED. ROAD DIST. NO. 7 ILLINOIS FED. AID PROJECT				
CONTRACT NO. 94700				

PLAN	DATE
BY	
REVISION	
NO.	
DESCRIPTION	
DATE	



REVISIONS	
NAME	DATE

ILLINOIS DEPARTMENT OF TRANSPORTATION
EROSION CONTROL PLAN
 VERT. N/A
 SCALE: HORIZ. 1" = 20'
 DATE 06-27-03
 DRAWN BY ELA
 CHECKED BY AEF

REVISED 12/20/05

DATE TIME
 DDN-SPEC
 REF