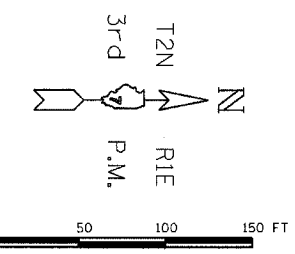


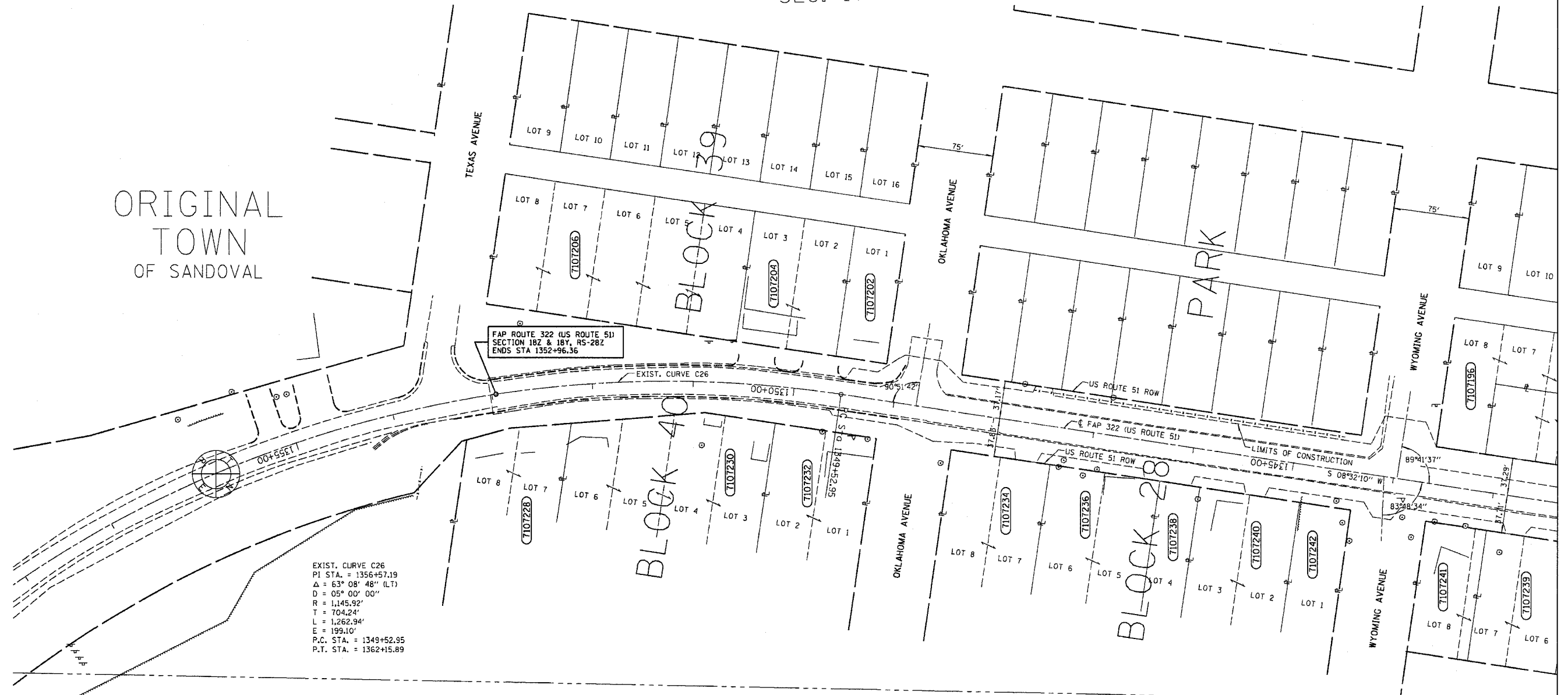
T 2 N R 1 E 3rd PM

SANDOVAL TWP



SW1/4
SEC. 17

ORIGINAL
TOWN
OF SANDOVAL



FAP ROUTE 322 (US ROUTE 51)
SECTION 182 & 18Y, RS-28Z
ENDS STA 1352+96.36

EXIST. CURVE C26
PI STA. = 1356+57.19
 $\Delta = 63^\circ 08' 48''$ (LT)
D = $05^\circ 00' 00''$
R = 1,145.92'
T = 704.24'
L = 1,262.94'
E = 199.10'
P.C. STA. = 1349+52.95
P.T. STA. = 1362+15.89

SE1/4
SEC. 17

RIGHT OF WAY PLANS
FAP ROUTE 327
PROJECT SANDOVAL SECTION 182 & 18Y, RS-28Z
STATION 1343+00.00 TO
STATION 1352+96.36
COUNTY MARION
SCALE 1"=50' SHEET 2221 OF 222

DRAWN BY _____
WRITTEN BY _____
CHECKED BY _____
INSPECTED BY _____

- LEGEND
- (R) = RECORDED DISTANCE
 - Δ = DELTA ANGLE
 - D = DEGREE OF CURVE
 - R = RADIUS
 - T = TANGENT LENGTH
 - L = LENGTH OF CURVE
 - C = CHORD LENGTH
 - PC = POINT OF CURVATURE
 - PT = POINT OF TANGENCY
 - PI = POINT OF INTERSECTION
 - POC = POINT ON CURVE
 - \odot = 5/8" IRON ROD
 - \square = PROPERTY LINE

NOTE: BEARINGS ARE REFERENCED TO THE ILLINOIS STATE PLANE COORDINATE SYSTEM, EAST ZONE, NORTH AMERICAN DATUM (NAD 1983)

NOTE: ALL AREAS ARE IN SQUARE FEET UNLESS OTHERWISE NOTED.

NOTE: TEMPORARY EASEMENTS ARE NEEDED AS A WORK AREA

JOB NO. R-97-007-01