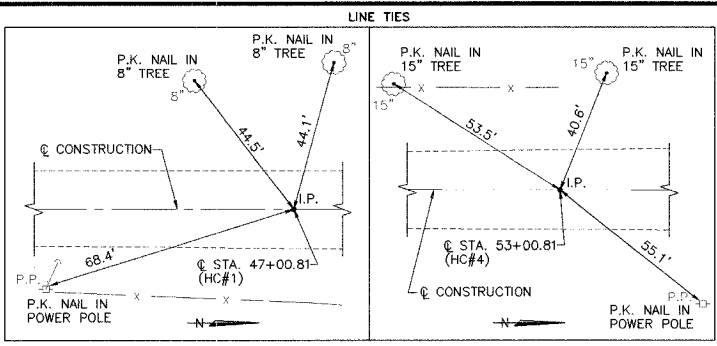


ROUTE NO.	SECTION	COUNTY	TOTAL SHEETS	SHEET NO.
FAS 2792	00-00114-00-BR	MARION	14	3
FED. ROAD DIST. NO.		ILLINOIS PROJECT	CONTRACT NO. 95461	



HORIZONTAL CONTROL COORDINATES

POINT	LOCATION	N. COOR.	E. COOR.
HC#1(IRON PIN)	© STA. 47+00.81	4585.36	5012.37
HC#2(IRON PIN)	12.61' LT., STA. 49+01.61	4786.18	5000.00
HC#3(IRON PIN)	12.88' LT., STA. 51+15.43	5000.00	5000.00
HC#4(IRON PIN)	© STA. 53+00.81	5185.36	5013.10

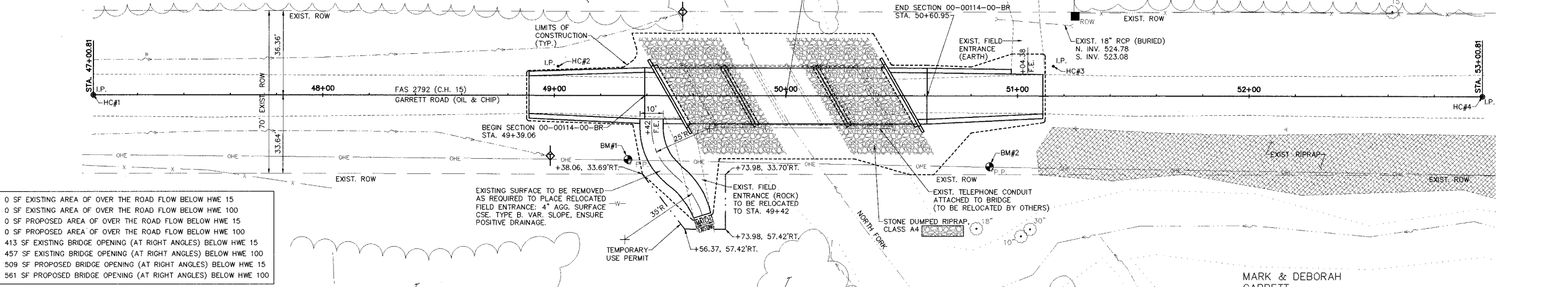
BENCH MARK COORDINATES

POINT	LOCATION	ELEV.
BM#1(R.R. SPIKE IN POWER POLE)	27.31' RT., STA. 49+31.82	529.11
BM#2(R.R. SPIKE IN POWER POLE)	30.24' RT., STA. 50+87.97	525.72

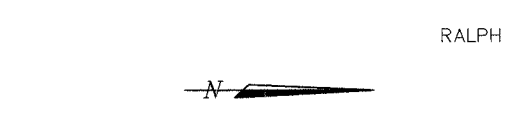
CONSTRUCT SEEDING, CLASS 2 (SPECIAL)
 STA. 48+89.06 TO STA. 51+10.95 = 0.04 ACRE

STA. 50+00 (EXISTING S.N. 061-3032) SECTION 00-00114-00-BR, EXISTING BRIDGE - FIVE SPAN TIMBER DECK, TIMBER STRINGERS, TIMBER PIER PILING AND TIMBER ABUTMENTS, TO BE REMOVED.

STA. 50+00 CONSTRUCT (PROPOSED S.N. 061-3300) THREE SPAN PRECAST PRESTRESSED CONCRETE DECK BEAM BRIDGE (101.89' BK. TO BK. ABUTMENTS) WITH SPILL THRU ABUTMENTS AND PILE BENT PIERS ON STEEL H-PILES, 30' SKEW, 24' ROADWAY.

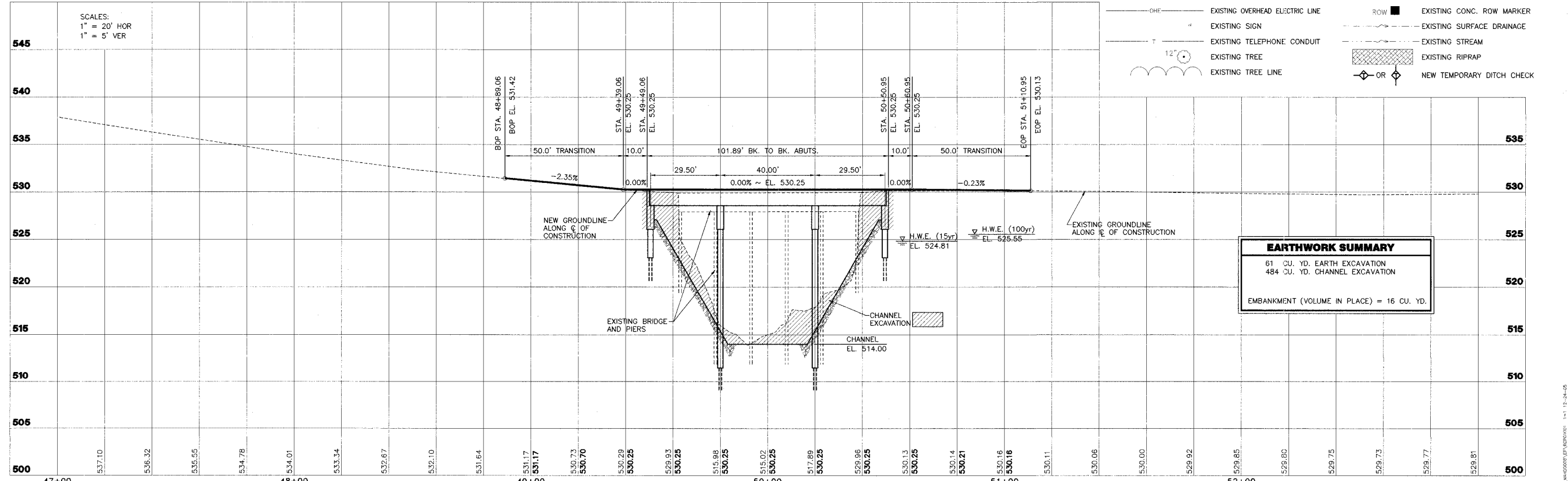


- 0 SF EXISTING AREA OF OVER THE ROAD FLOW BELOW HWE 15
- 0 SF EXISTING AREA OF OVER THE ROAD FLOW BELOW HWE 100
- 0 SF PROPOSED AREA OF OVER THE ROAD FLOW BELOW HWE 15
- 0 SF PROPOSED AREA OF OVER THE ROAD FLOW BELOW HWE 100
- 413 SF EXISTING BRIDGE OPENING (AT RIGHT ANGLES) BELOW HWE 15
- 457 SF EXISTING BRIDGE OPENING (AT RIGHT ANGLES) BELOW HWE 100
- 509 SF PROPOSED BRIDGE OPENING (AT RIGHT ANGLES) BELOW HWE 15
- 561 SF PROPOSED BRIDGE OPENING (AT RIGHT ANGLES) BELOW HWE 100



LEGEND

-W-	EXISTING WATER LINE	x	EXISTING FENCE
P.P. ⚡	EXISTING POWER POLE	I.P.	EXISTING IRON PIN
—	EXISTING GUY WIRE	⊙	EXISTING BENCH MARK
OHE	EXISTING OVERHEAD ELECTRIC LINE	■	EXISTING CONC. ROW MARKER
—	EXISTING SIGN	---	EXISTING SURFACE DRAINAGE
—	EXISTING TELEPHONE CONDUIT	---	EXISTING STREAM
⊙	EXISTING TREE	▨	EXISTING RIPRAP
⊙	EXISTING TREE LINE	◇ OR ◇	NEW TEMPORARY DITCH CHECK



EARTHWORK SUMMARY

61 CU. YD. EARTH EXCAVATION
484 CU. YD. CHANNEL EXCAVATION
EMBANKMENT (VOLUME IN PLACE) = 16 CU. YD.

	2524 South Broadway Salem, Illinois 62881 PH(618)548-5500 FAX(618)548-5246 IL Design Firm Registration No. 184-001518	FAS 2792 SECTION 00-00114-00-BR MARION COUNTY, ILLINOIS	PLAN AND PROFILE STA. 47+00 TO STA. 53+00	SURVEY JAS DESIGN J.C.MRQ DRAWN J.M.W.BLT	CHECKED MRQ APPROVED DATE 12-14-05 REVISED JOB NO 30132
--	--	--	--	---	---