

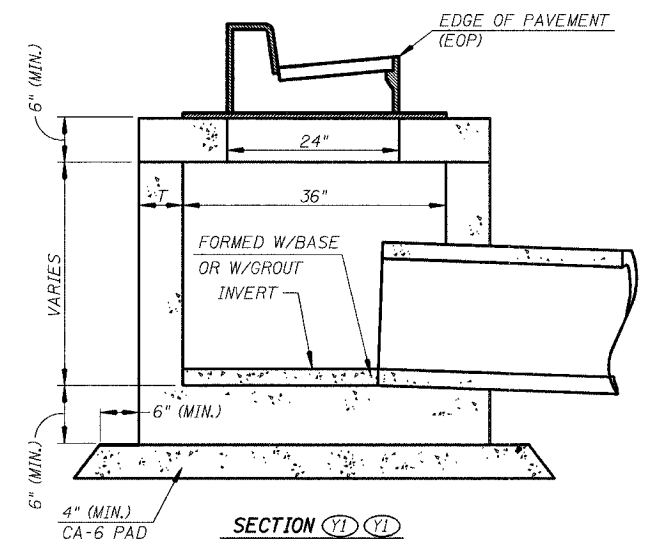
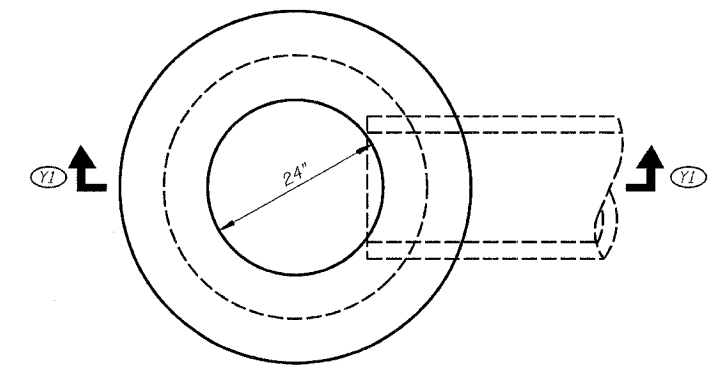
F.A.U. RTE.	SECTION	COUNTY	TOTAL SHEETS	SHEET NO.
9315	00-00032-00-RP	MONROE	49	6
STA.	TO STA.			
FED. ROAD DIST. NO.	ILLINOIS	FED. AID PROJECT		

CONTRACT NO. 97264

STORM SEWER SCHEDULE

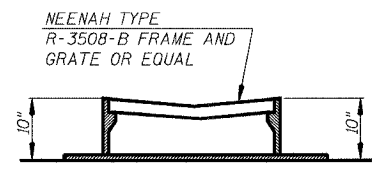
LOCATION	STA - STA	*GRANULAR BACKFILL TON	STORM SEWER REMOVAL 12 INCH FOOT	REMOVING INLETS EACH	SANITARY MANHOLES TO BE ADJUSTED EACH	STORM SEWERS, CLASS B			STORM SEWER WATERMAIN REQUIREMENTS 12 INCH FOOT	INLETS, TYPE A		INLETS, TYPE B			8" PIPE DRAIN W/8" RISER CONN. FOOT
						TYPE 1		TYPE 2		TYPE 3V	SPECIAL	TYPE 1	TYPE 3V	SPECIAL	
						12 INC FOOT	12 INCH FOOT	18 INCH FOOT		F. & G.	F. & G.	FR. & CL. LID EACH	F. & G.	F. & G.	
MOORE STREET															
MR-19 TO MR-20	RT. 113+75 - 114+25	20.7				45.8				1				1	
ML-3 TO PCBC 7'x4'	LT. 114+17	10.9					10.9						1		
MR-20 TO DBL PCBC 10'x6'	RT. 114+25	14.6													
	LT. 114+45.28, 11.62'				1										
ML-4 TO DBL PCBC 10'x6'	LT. 114+46.47	10.9					22.8						1		
MMHR-1 TO DBL PCBC 10'x6'	RT. TO BE SET IN FIELD	19.3					8.0						1		
MR-21 TO DBL PCBC 10'x6'	RT. 114+56.75									1					
	RT. 114+73.85 - 114+92.47	50.5													
ML-5 TO DBL PCBC 10'x6'	LT. 114+75									1					
ML-6 TO DBL PCBC 10'x6'	LT. 114+78.42									1					
ML-7 TO DBL PCBC 10'x6'	LT. 114+83.64					2.4				1					
MR-22 TO DBL PCBC 10'x6'	RT. 114+75.19									1					
MR-23 TO DBL PCBC 10'x6'	RT. 114+78.92									1					
	RT. 114+92.46, 57.94'			1											
MR-24 TO MR-25	RT. 114+96.02					2.0					1				
MR-25 TO DBL PCBC 10'x6'	RT. 115+00					3.0								1	
MMHR-2 TO DBL PCBC 10'x6'	RT. TO BE SET IN FIELD	2.9						11.2					1		8.0
	LT. 115+59.97, 0.55'				1										
MR-26 TO DBL PCBC 10'x6'	RT. 116+00	1.4							23.9	1					
	LT. 117+70.59, 2.83'				1										
TOTALS:		81	51	1	3	54	64	12	24	8	1	2	2	2	8

* PLAN CALL OUTS SHOW CUBIC YARD QUANTITY AT EACH LOCATION. TONNAGE SHOWN HERE IS FOR CONTRACTOR'S INFORMATION ONLY (BASED ON 2.05 TONS/CU. YD.)



INLET, TYPE B DETAILS

(CONTRACTOR MAY OPT TO USE THIS DETAIL TO MODIFY STANDARD 602306 OR STANDARD 602306 ITSELF, WHEN THE DEPTH IS ADEQUATE FOR A CORBEL)



SPECIAL FRAME & GRATE DETAILS

ILLINOIS DEPARTMENT OF TRANSPORTATION

STORM SEWER SCHEDULE & DETAILS

SCALE DATE DRAWN BY CHECKED BY

CADD FILE: /4690/Fbsched_4690.dgn PLOTTED: 10/24/2005

FLM & G. INC. 4690