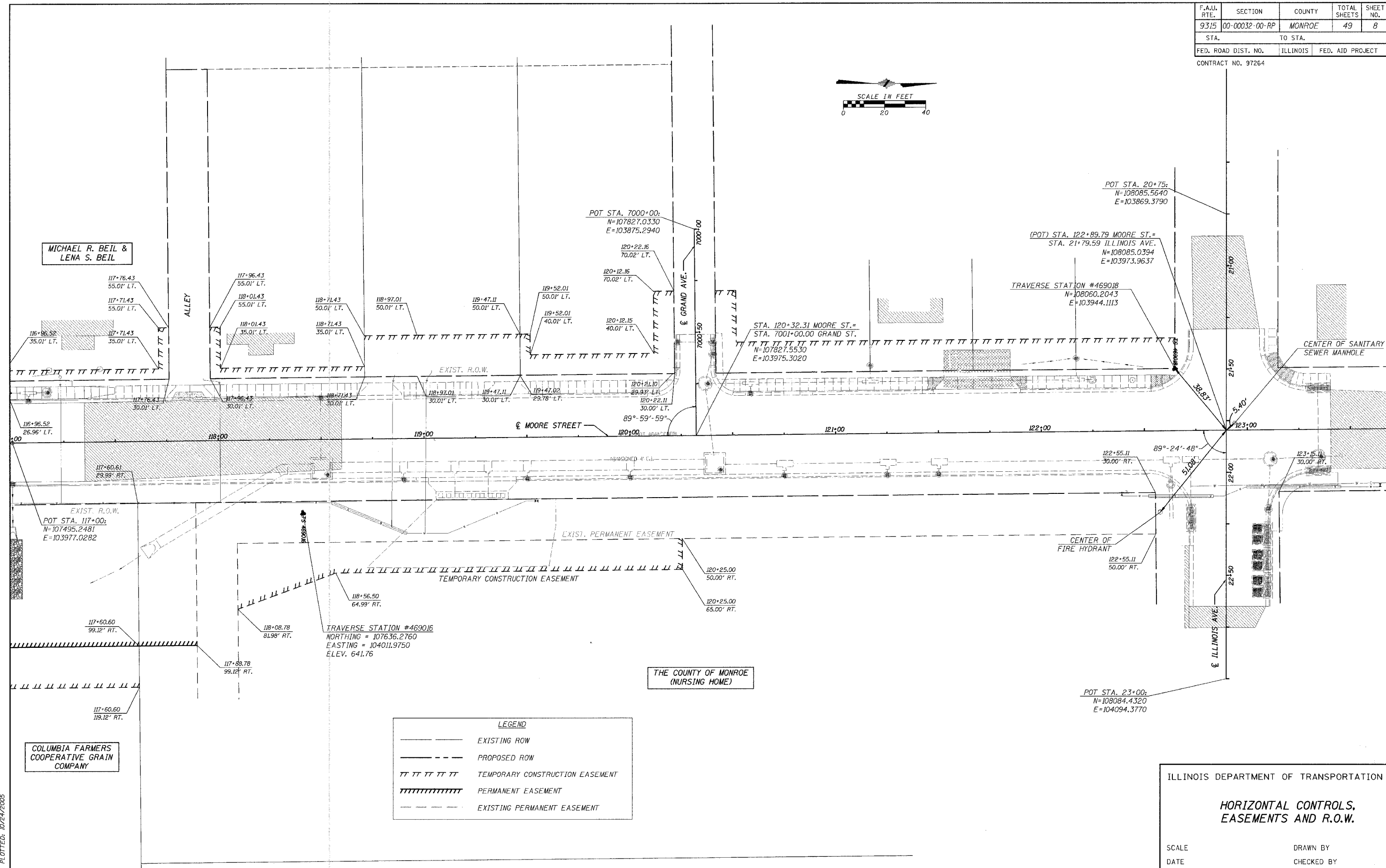


F.A.U. RTE.	SECTION	COUNTY	TOTAL SHEETS	SHEET NO.
9315	00-00032-00-RP	MONROE	49	8
STA.	TO STA.			
FED. ROAD DIST. NO.	ILLINOIS	FED. AID PROJECT		

CONTRACT NO. 97264



LEGEND

———	EXISTING ROW
- - - - -	PROPOSED ROW
	TEMPORARY CONSTRUCTION EASEMENT
	PERMANENT EASEMENT
- - - - -	EXISTING PERMANENT EASEMENT

ILLINOIS DEPARTMENT OF TRANSPORTATION

**HORIZONTAL CONTROLS,
EASEMENTS AND R.O.W.**

SCALE _____ DATE _____ DRAWN BY _____ CHECKED BY _____

CADD FILE: /4690/FB/IES8ROW6500.DGN PLOTTED: 10/24/2005

H.M. & G. INC. 4690